

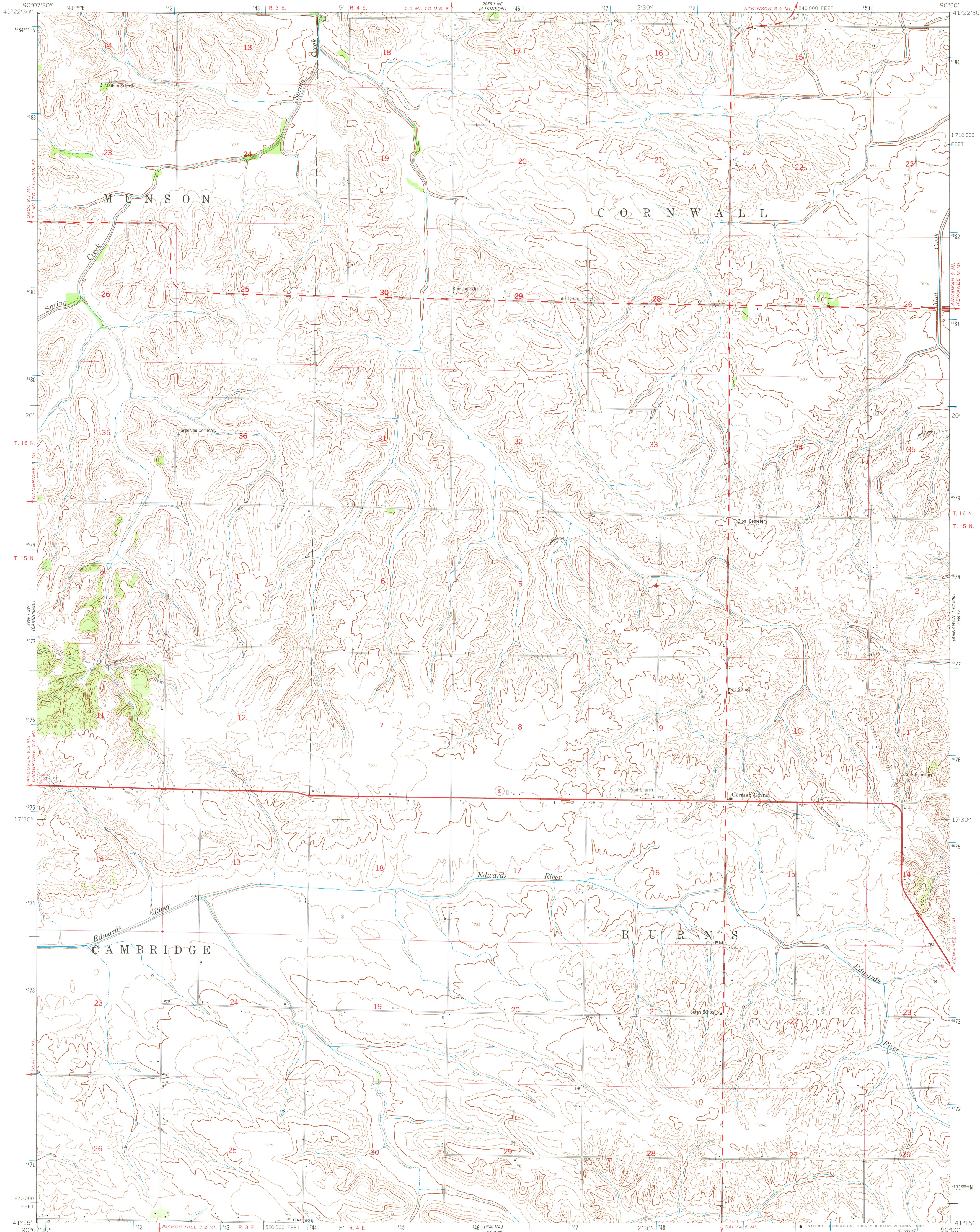
2966 I NW
(GENESEE)

UNITED STATES
DEPARTMENT OF THE INTERIOR
GEOLOGICAL SURVEY

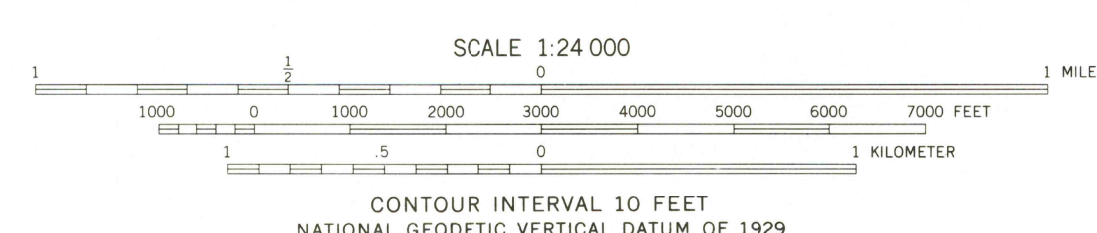
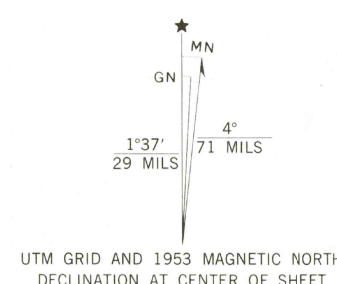
UNITED STATES
DEPARTMENT OF THE ARMY
CORPS OF ENGINEERS

GERMAN CORNER QUADRANGLE
ILLINOIS—HENRY CO.
7.5 MINUTE SERIES (TOPOGRAPHIC)

2966 I NE
(HAWAIIAN 1:62,500)



Mapped by the Army Map Service
Published for civil use by the Geological Survey
Control by USGS, USC&GS, and USCE
Topography from aerial photographs by photogrammetric methods
Aerial photographs taken 1952-1953. Field check 1953
Polyconic projection. 1927 North American datum
10,000-foot grid based on Illinois coordinate system, west zone
1000-meter Universal Transverse Mercator grid ticks,
zone 15, shown in blue
Unchecked elevations are shown in brown
To place on the predicted North American Datum 1983
move the projection lines 2 meters north and
9 meters east as shown by dashed corner ticks
Map Photoinspected 1975
No major culture or drainage changes observed



ROAD CLASSIFICATION

Heavy-duty	Light-duty
Medium-duty	Unimproved dirt
State Route	

GERMAN CORNER, ILL.
N4115—W9000/7.5

USGS
HISTORICAL FILE
NATIONAL MAPS DIVISION

1953
PHOTOINSPECTED 1975
DMA 2966 I SE—SERIES V863

JUN 29 1981
1500