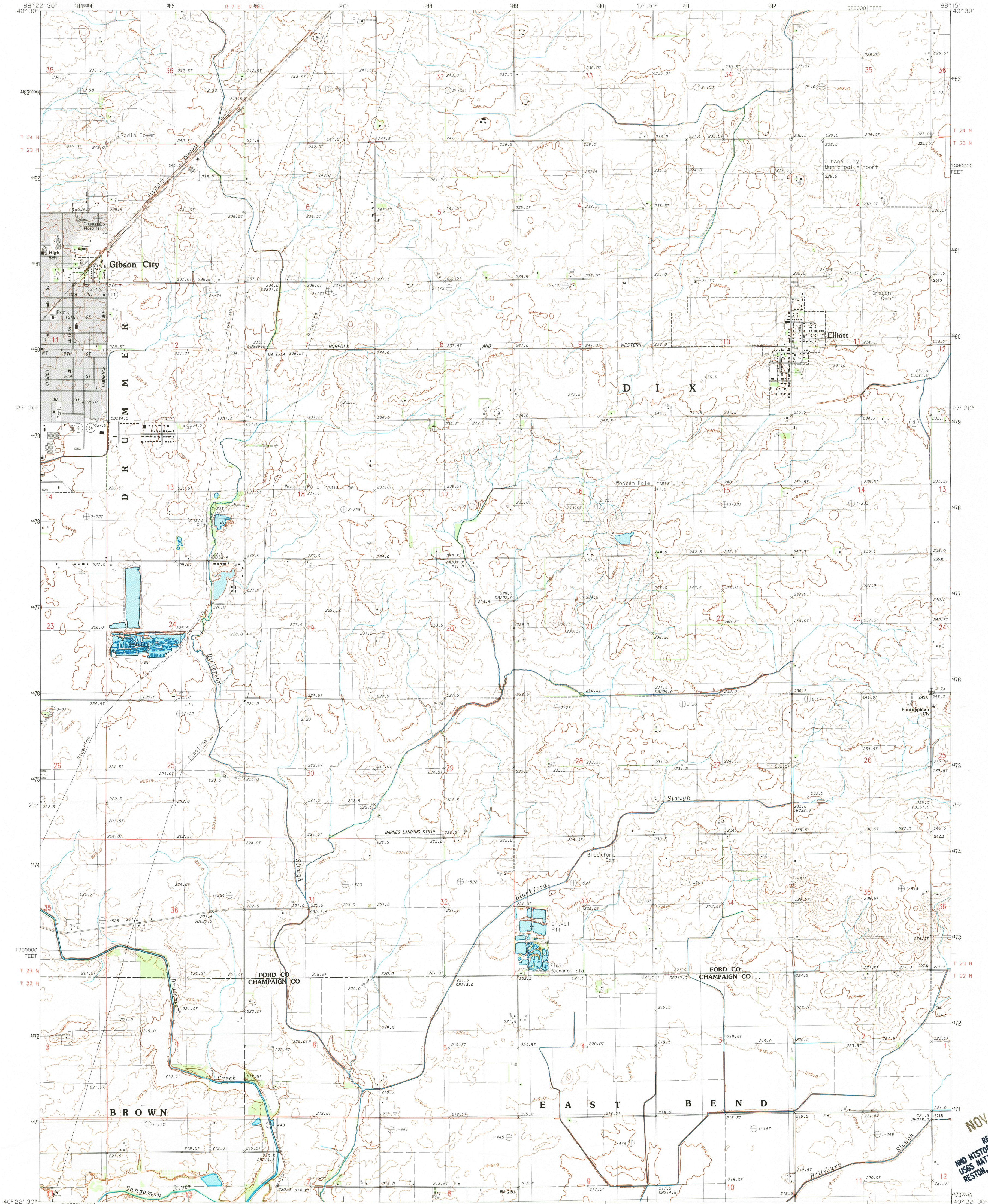


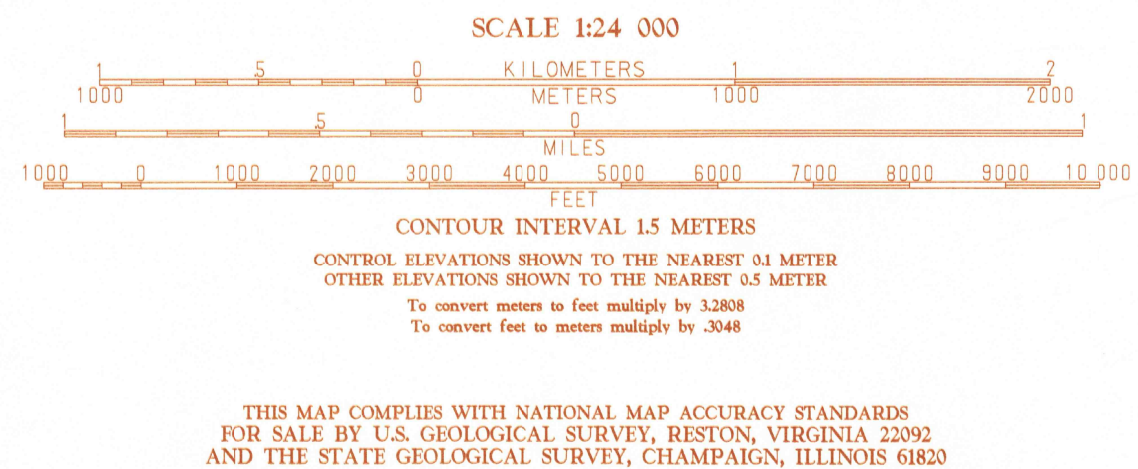
UNITED STATES
DEPARTMENT OF THE INTERIOR
GEOLOGICAL SURVEY

GIBSON CITY EAST QUADRANGLE
ILLINOIS
7.5 MINUTE SERIES (TOPOGRAPHIC)



PRODUCED BY THE UNITED STATES GEOLOGICAL SURVEY
CONTROL BY USGS AND NOS/NOAA
COMPILED BY DIGITAL-PHOTOGRAMMETRIC METHODS FROM AERIAL
PHOTOGRAPHS TAKEN 1976
FIELD CHECKED 1983
PROJECTION TRANSVERSE MERCATOR
GRID 100-METER UNIVERSAL TRANSVERSE MERCATOR ZONE 16
10000-FOOT STATE GRID TICKS ILLINOIS, EAST ZONE
UTM GRID DECLINATION 0° 51' WEST
1983 MAGNETIC NORTH DECLINATION 0° 30' EAST
VERTICAL DATUM NATIONAL GEODETIC VERTICAL DATUM OF 1929
HORIZONTAL DATUM 1927 NORTH AMERICAN DATUM
To place on the predicted North American Datum of 1983,
move the projection lines as shown by dashed corner ticks
(5 meters east)
There may be private inholdings within the boundaries of any
Federal and State Reservations shown on this map
Gray tint indicates area in which selected buildings are shown
All lettering generated and positioned by automated type
placement procedures

PROVISIONAL MAP
Produced from original
manuscript drawings. Informa-
tion shown as of date of
field check. 3



1	2	3	4	5	6	7	8
1	2	3	4	5	6	7	8
1	2	3	4	5	6	7	8
1	2	3	4	5	6	7	8

ROAD LEGEND
Improved Road
Unimproved Road
Trail
Interstate Route
U.S. Route
State Route
GIBSON CITY EAST, ILLINOIS
PROVISIONAL EDITION 1983
40088-D3-TM-024

NOV 30 1983
RETURN TO:
NWD HISTORICAL MAP ARCHIVES
USGS NATIONAL CENTER, MS-522
RESTON, VA 22092