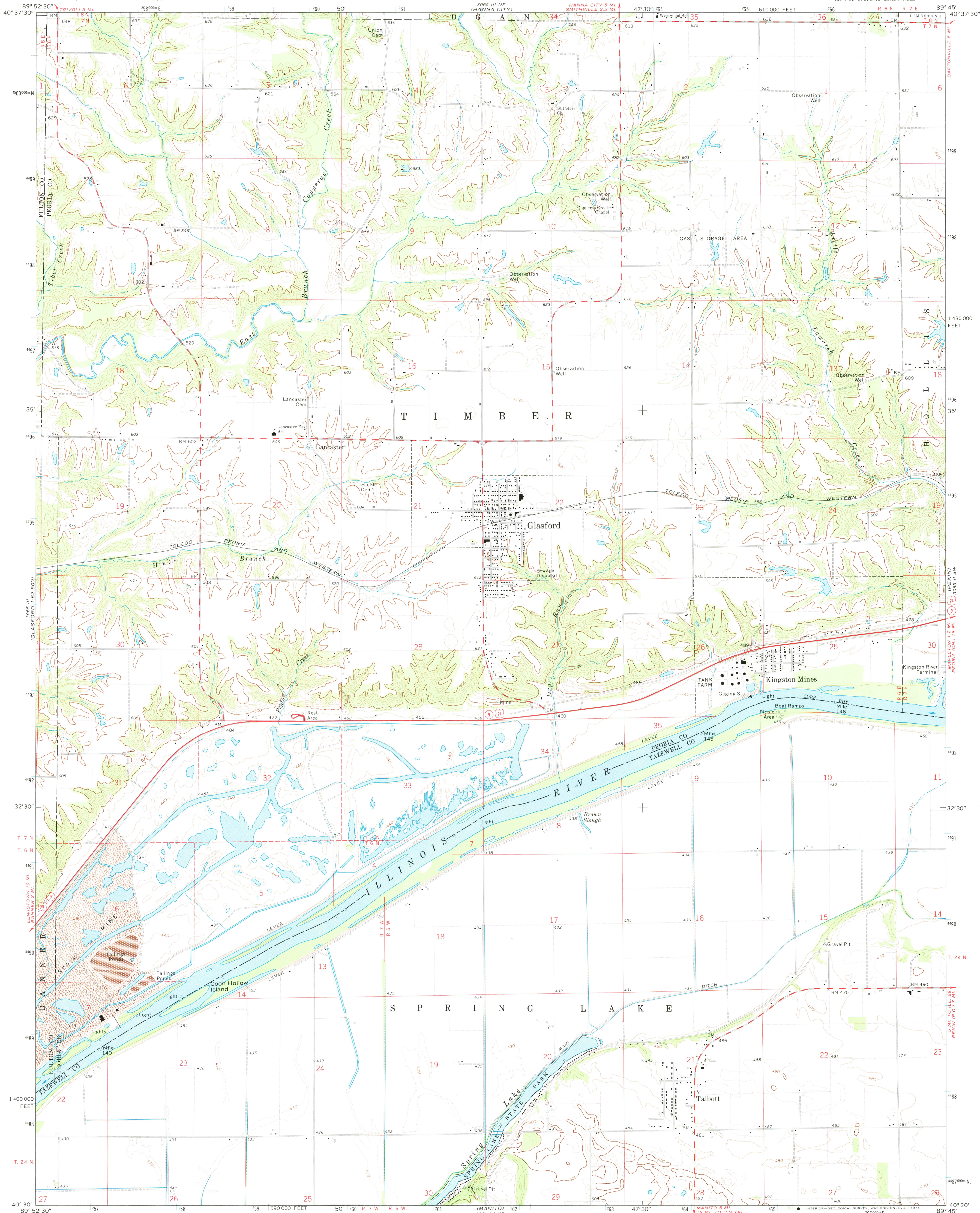


UNITED STATES
DEPARTMENT OF THE INTERIOR
GEOLOGICAL SURVEY

GLASFORD QUADRANGLE
ILLINOIS
7.5 MINUTE SERIES (TOPOGRAPHIC)
SE 1/4 GLASFORD 15' QUADRANGLE



Mapped, edited, and published by the Geological Survey

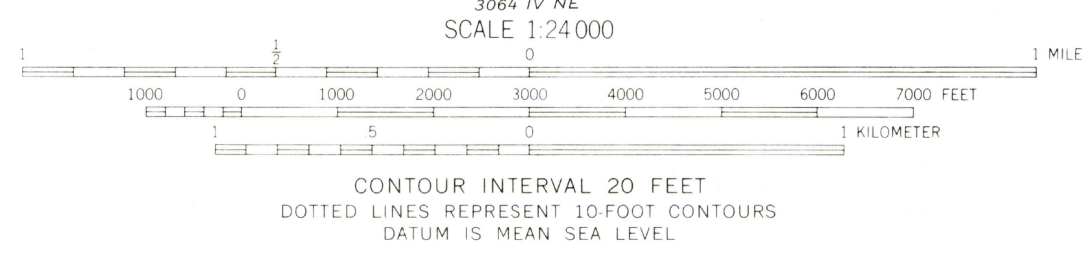
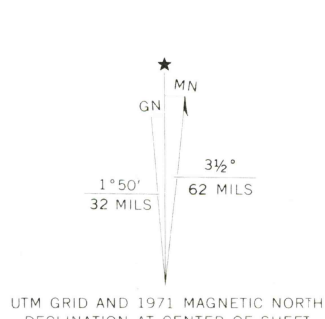
Control by USGS and USC&GS

Topography by photogrammetric methods from aerial photographs taken 1970. Field checked 1971

Projection and 10,000-foot grid ticks: Illinois coordinate system, west zone (transverse Mercator)

1000-meter Universal Transverse Mercator grid ticks, zone 16, shown in blue. 1927 North American datum

Fine red dashed lines indicate selected fence and field lines where generally visible on aerial photographs. This information is unchecked



ROAD CLASSIFICATION	
Primary highway, hard surface	Light-duty road, hard or improved surface
Secondary highway, hard surface	Unimproved road
Interstate Route	U. S. Route
	State Route

THIS MAP COMPLIES WITH NATIONAL MAP ACCURACY STANDARDS
FOR SALE BY U.S. GEOLOGICAL SURVEY, WASHINGTON, D.C. 20242
AND BY THE STATE GEOLOGICAL SURVEY, URBANA, ILLINOIS 61801
A FOLDER DESCRIBING TOPOGRAPHIC MAPS AND SYMBOLS IS AVAILABLE ON REQUEST

GLASFORD, ILL.
SE 1/4 GLASFORD 15' QUADRANGLE
N 4030—W 8945/7.5
1971

AMS 3065 III SE—SERIES V 863

3775