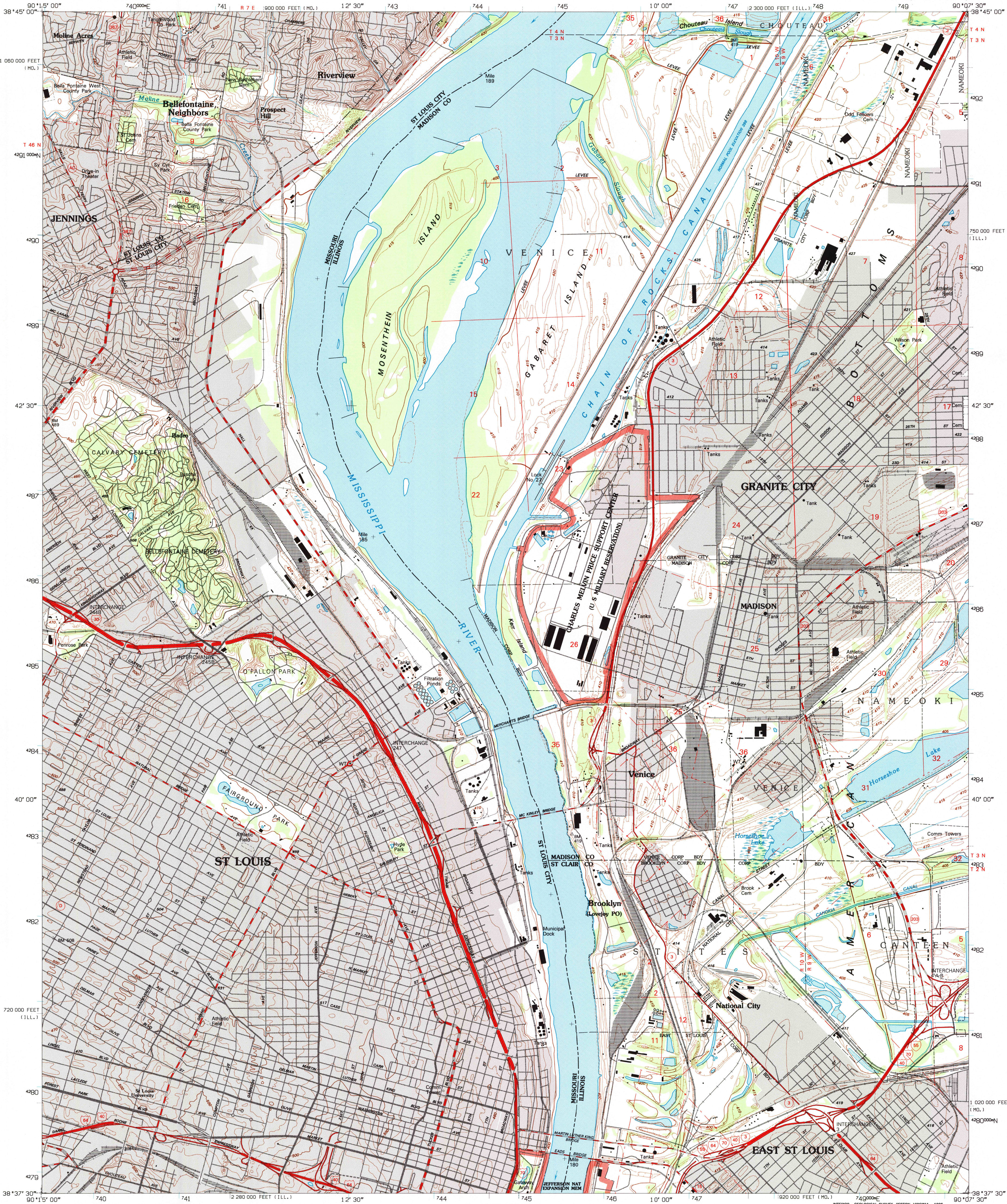
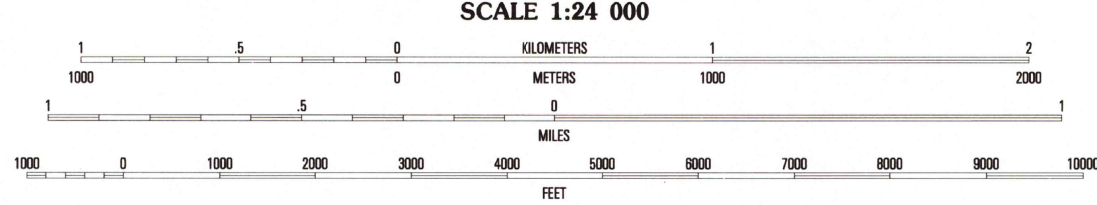
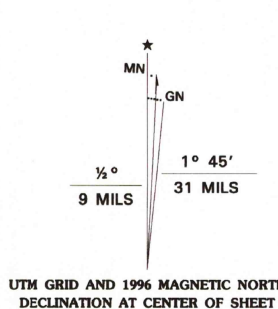


UNITED STATES
DEPARTMENT OF THE INTERIOR
GEOLOGICAL SURVEY

GRANITE CITY QUADRANGLE
ILLINOIS-MISSOURI
7.5-MINUTE SERIES (TOPOGRAPHIC)



Produced by the United States Geological Survey
in cooperation with U.S. Corps of Engineers
Compiled by planimetric surveys 1930 and 1933. Revised from
imagery dated 1952. Field checked 1954. Revised from
imagery dated 1993. PLSS and survey control current as
of 1954. Map edited 1996. Contours not revised.
Contours that conflict with revised planimetry are dashed.
North American Datum of 1983 (NAD 83). Projection and
blue 1000-foot ticks: Universal Transverse Mercator, zone 15
10 000-foot ticks: Illinois (west zone) and Missouri (east zone)
Coordinate Systems of 1983
North American Datum of 1927 (NAD 27) is shown by dashed
corner ticks. The values of the shift between NAD 83 and NAD 27
for 7.5-minute intersections are obtainable from National Geodetic
Survey NADCON software.
There may be private inholdings within the boundaries of
the National or State reservations shown on this map.



CONTOUR INTERVAL 10 FEET
SUPPLEMENTARY CONTOUR INTERVAL 5 FEET
NATIONAL GEODETIC VERTICAL DATUM OF 1929

FOR SALE BY U.S. GEOLOGICAL SURVEY, DENVER, COLORADO 80225, OR RESTON, VIRGINIA 22092
ILLINOIS GEOLOGICAL SURVEY, CHAMPAIGN, ILLINOIS 61820
AND DIVISION OF GEOLOGY AND LAND SURVEY
MISSOURI DEPARTMENT OF NATURAL RESOURCES, ROLLA, MISSOURI 65401
A FOLDER DESCRIBING TOPOGRAPHIC MAPS AND SYMBOLS IS AVAILABLE ON REQUEST

ROAD CLASSIFICATION

Primary highway
hard surface
Secondary highway
hard surface
Light-duty road, hard or
improved surface
Unimproved road

Interstate Route
U.S. Route
State Route

QUADRANGLE LOCATION

1	2	3
4	5	6
7	8	9

1 Florissant
2 Columbia Bottom
3 Wood River
4 Clayton
5 Monks Mound
6 Weber Groves
7 Cahokia
8 French Village

OCT 16 1996
REC'D FILE COPY

GRANITE CITY, IL-MO
38090-F2-TF-024
1993
DMA 2961 11 NW-SERIES V663

