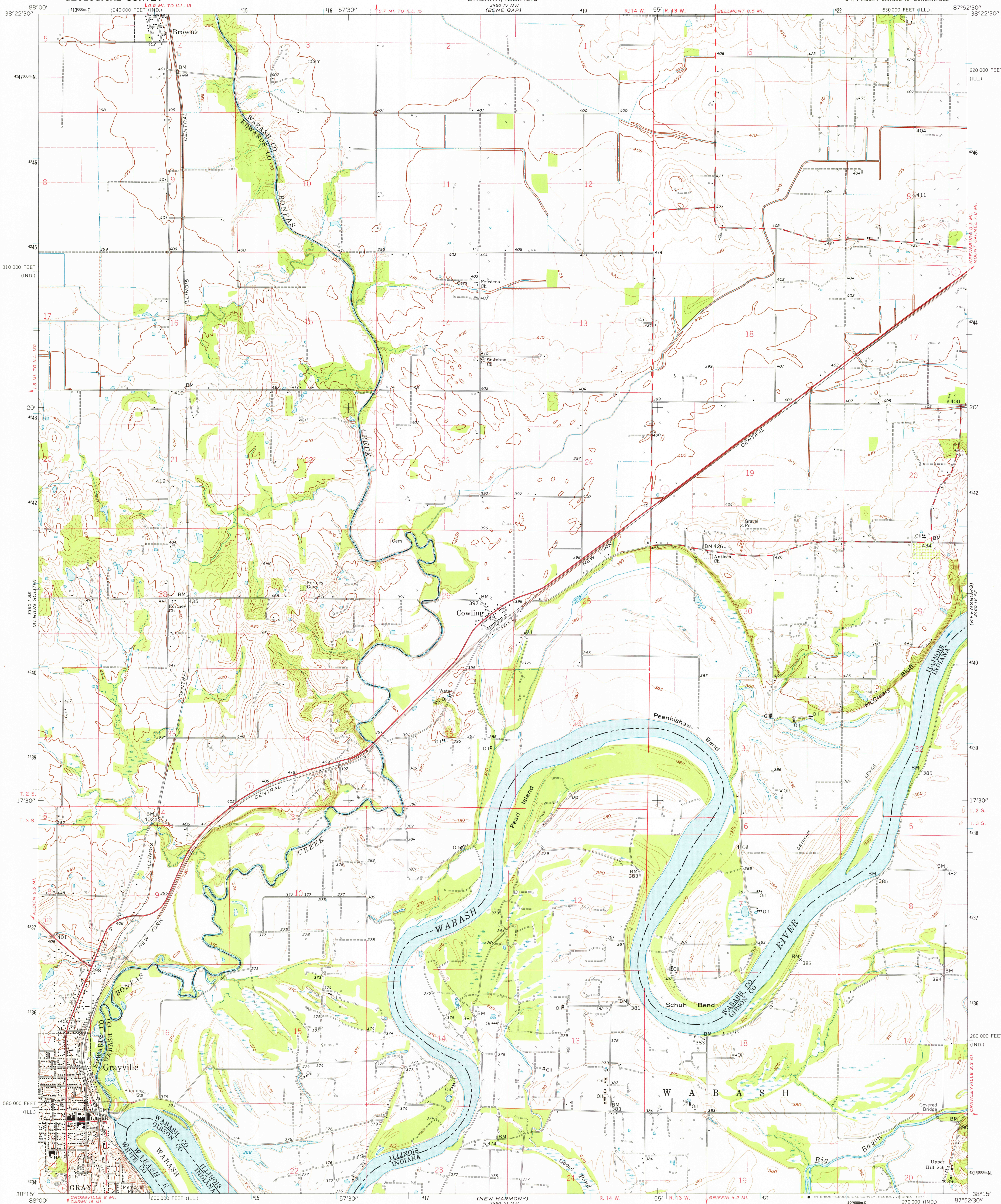


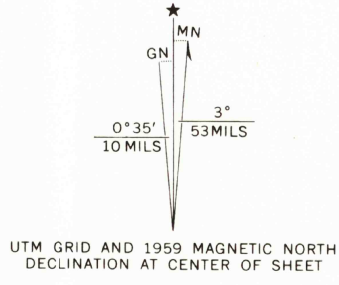
UNITED STATES
DEPARTMENT OF THE INTERIOR
GEOLOGICAL SURVEY

STATE OF ILLINOIS
DEPARTMENT OF REGISTRATION AND EDUCATION
GEOLOGICAL SURVEY DIVISION
URBANA, ILLINOIS

GRAYVILLE QUADRANGLE
ILLINOIS-INDIANA
7.5 MINUTE SERIES (TOPOGRAPHIC)
SW 1/4 MOUNT CARMEL 15' QUADRANGLE



Mapped, edited, and published by the Geological Survey
Control by USGS, USC&GS, and USCE
Culture and drainage in part compiled from aerial photographs
taken 1958. Topography by photogrammetric methods and by
planetable surveys 1959
Polyconic projection. 1927 North American datum
10,000-foot grids based on Illinois coordinate system, east zone,
and Indiana coordinate system, west zone
1000-metre Universal Transverse Mercator grid ticks,
zone 16, shown in blue
Fine red dashed lines indicate selected fence and field lines where
generally visible on aerial photographs. This information is unchecked
All wells shown are oil wells



SCALE 1:24 000
1 000 0 1000 2000 3000 4000 5000 6000 7000 FEET
1 5 0 1 KILOMETRE
CONTOUR INTERVAL 10 FEET
DOTTED LINES REPRESENT 5-FOOT CONTOURS
NATIONAL GEODETIC VERTICAL DATUM OF 1929
THIS MAP COMPLIES WITH NATIONAL MAP ACCURACY STANDARDS
FOR SALE BY U. S. GEOLOGICAL SURVEY, RESTON, VIRGINIA 22092
STATE GEOLOGICAL SURVEY, URBANA, ILLINOIS 61801,
AND INDIANA DEPARTMENT OF NATURAL RESOURCES, INDIANAPOLIS, INDIANA 46204
A FOLDER DESCRIBING TOPOGRAPHIC MAPS AND SYMBOLS IS AVAILABLE ON REQUEST



ROAD CLASSIFICATION
Heavy-duty ——— Light-duty ———
Medium-duty ——— Unimproved dirt ———
State Route ———

GRAYVILLE, ILL.-IND.
SW 1/4 MOUNT CARMEL 15' QUADRANGLE
N3815-W8752.5/7.5
1959
AMS 3460 IV SW-SERIES W863

FEB 17 1976