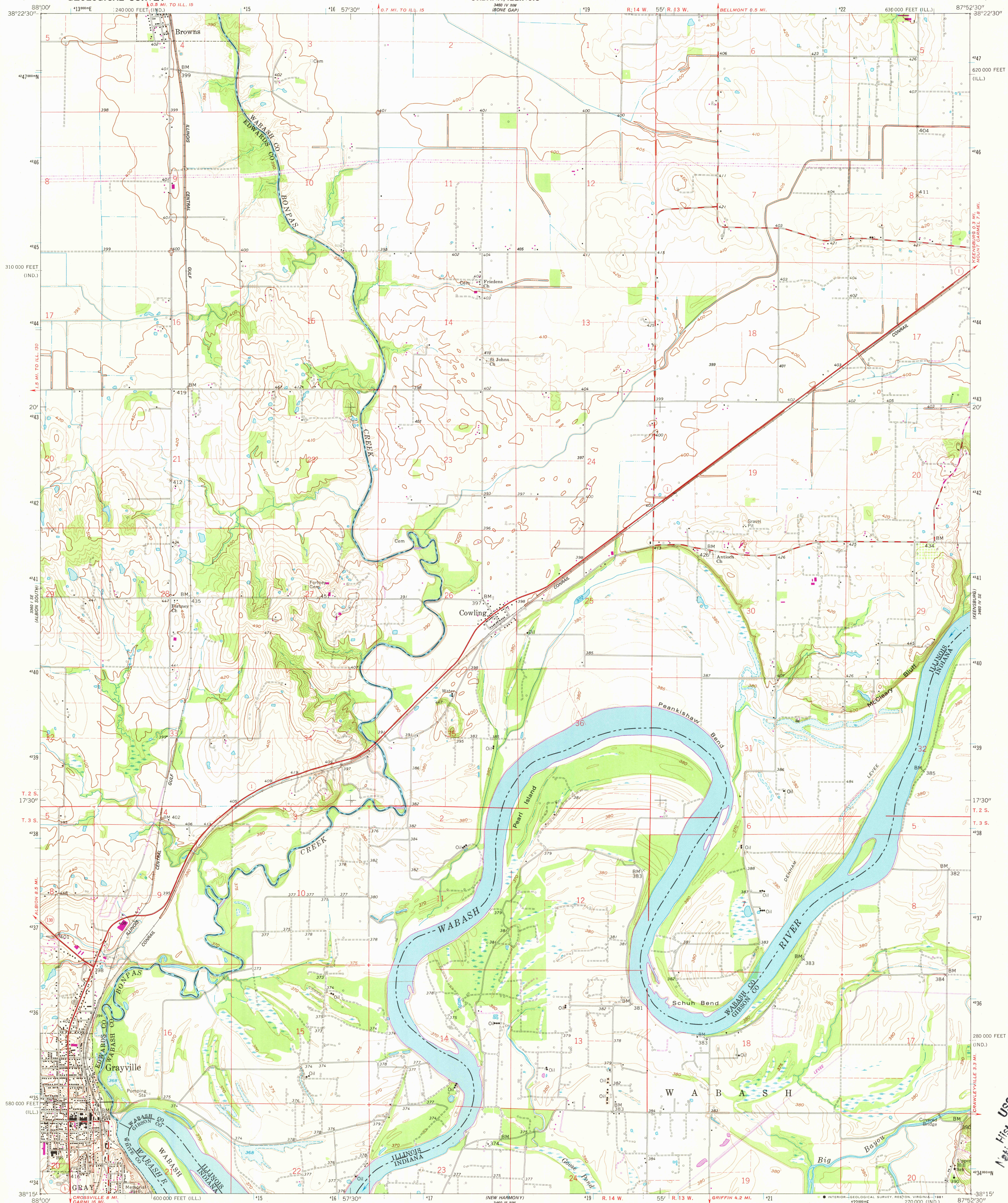


UNITED STATES
DEPARTMENT OF THE INTERIOR
GEOLOGICAL SURVEY

STATE OF ILLINOIS
DEPARTMENT OF REGISTRATION AND EDUCATION
GEOLOGICAL SURVEY DIVISION
URBANA, ILLINOIS

GRAYVILLE QUADRANGLE
ILLINOIS-INDIANA
7.5 MINUTE SERIES (TOPOGRAPHIC)



Mapped, edited, and published by the Geological Survey

Control by USGS, USC&GS, and USCE

Culture and drainage in part compiled from aerial photographs taken 1958. Topography by planetable surveys 1959

Polyconic projection

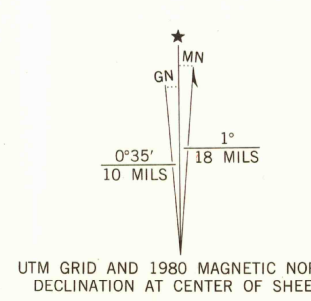
10,000-foot grids based on Illinois coordinate system, east zone, and Indiana coordinate system, west zone

1000-meter Universal Transverse Mercator grid ticks, zone 16, shown in blue. 1927 North American Datum

To place on the predicted North American Datum 1983 move the projection lines 3 meters south and 3 meters east as shown by dashed corner ticks

Fine red dashed lines indicate selected fence and field lines where generally visible on aerial photographs. This information is unchecked

All wells shown are oil wells



SCALE 1:24,000

CONTOUR INTERVAL 10 FEET
DOTTED LINES REPRESENT 5-FOOT CONTOURS
NATIONAL GEODETIC VERTICAL DATUM OF 1929

THIS MAP COMPLIES WITH NATIONAL MAP ACCURACY STANDARDS
FOR SALE BY U. S. GEOLOGICAL SURVEY, RESTON, VIRGINIA 22092,
STATE GEOLOGICAL SURVEY, URBANA, ILLINOIS 61801,
AND INDIANA DEPARTMENT OF NATURAL RESOURCES, INDIANAPOLIS, INDIANA 46204
A FOLDER DESCRIBING TOPOGRAPHIC MAPS AND SYMBOLS IS AVAILABLE ON REQUEST



QUADRANGLE LOCATION

ROAD CLASSIFICATION

Heavy-duty Light-duty
Medium-duty Unimproved dirt

State Route

GRAYVILLE, ILL.-IND.

N 3815-W 8752.5/7.5

1959

PHOTOREVISED 1980
DMA 3460 IV SW-SERIES V863

USGS
Historical File
National Mapping Div.

APR 3 1981
3400