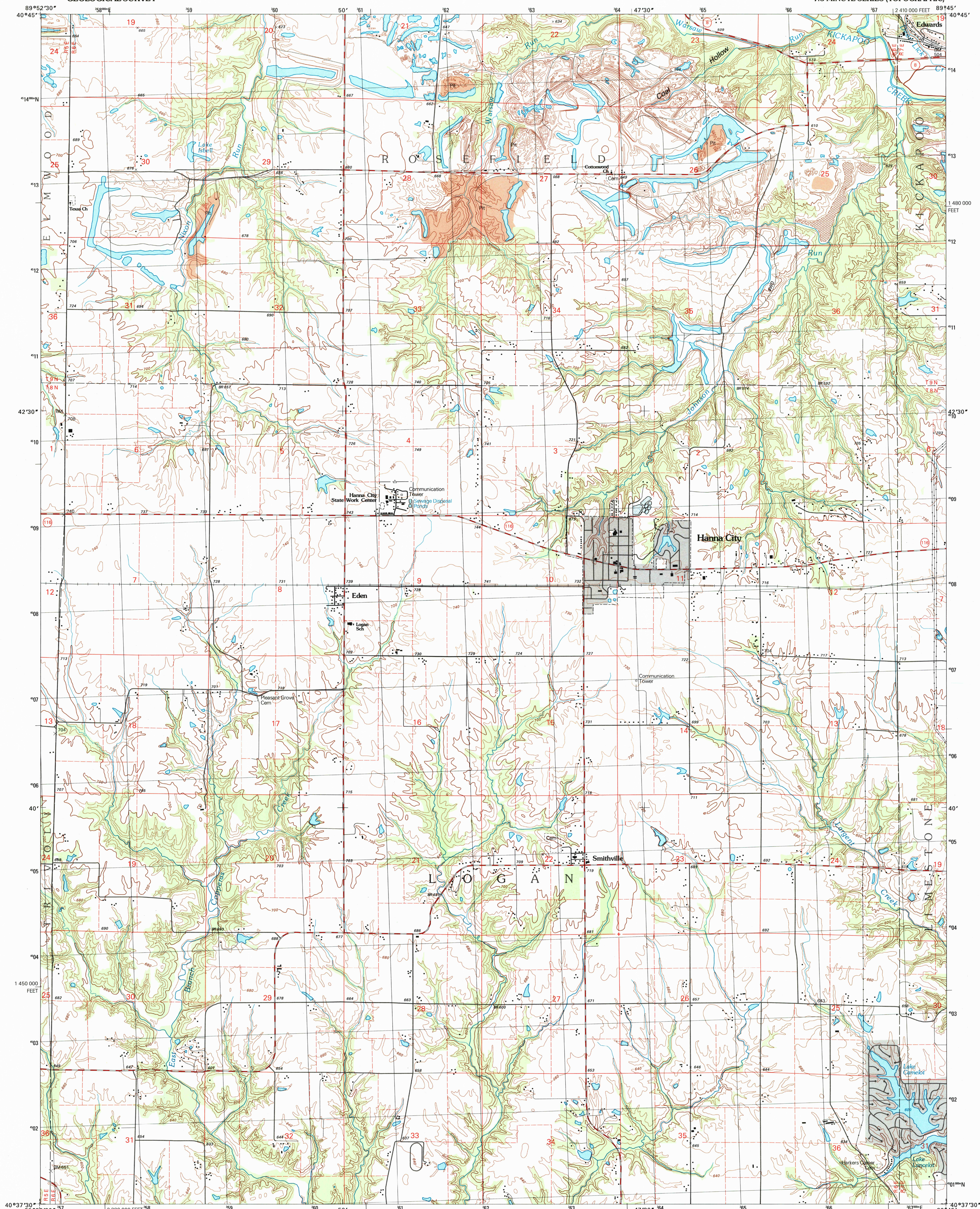


UNITED STATES
DEPARTMENT OF THE INTERIOR
GEOLOGICAL SURVEY

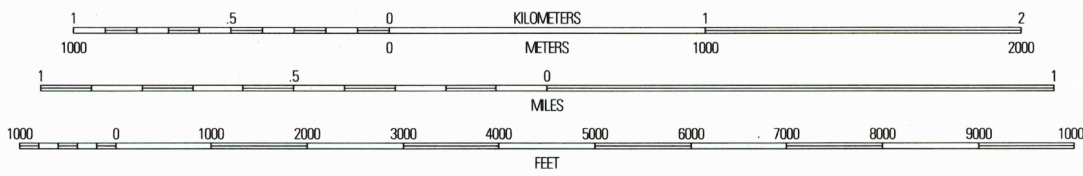
HANNA CITY QUADRANGLE
ILLINOIS-PEORIA CO.
7.5-MINUTE SERIES (TOPOGRAPHIC)



RECEIVED
MAR 31 1997
REC'D FILE COPY

Produced by the United States Geological Survey
in cooperation with State of Illinois agencies
Compiled by photogrammetric methods from imagery dated 1969
Field checked 1971. Revised from imagery dated 1993, 1995, and
other sources. Field checked 1996. Map edited 1997
North American Datum of 1983 (NAD 83). Projection and
1:250,000 scale. Universal Transverse Mercator, zone 16
10 000-foot ticks: Illinois Coordinate System of 1983 (west zone)
North American Datum of 1927 (NAD 27) is shown by dashed
corner ticks. The values of the shift between NAD 83 and NAD 27
for 7.5-minute intersections are obtainable from National Geodetic
Survey NADCON software

UTM GRID AND 1997 MAGNETIC NORTH
DECLINATION AT CENTER OF SHEET



CONTOUR INTERVAL 20 FEET
SUPPLEMENTARY CONTOUR INTERVAL 10 FEET
NATIONAL GEODETIC VERTICAL DATUM OF 1929

THIS MAP COMPLIES WITH NATIONAL MAP ACCURACY STANDARDS
FOR SALE BY U.S. GEOLOGICAL SURVEY, P.O. BOX 25286, DENVER, COLORADO 80225
AND ILLINOIS GEOLOGICAL SURVEY, CHAMPAIGN, ILLINOIS 61820
A FOLDER DESCRIBING TOPOGRAPHIC MAPS AND SYMBOLS IS AVAILABLE ON REQUEST



QUADRANGLE LOCATION

1	2	3
4	5	6
7	8	9

1 Elmwood
2 Oak Hill
3 Dunlap
4 Farmington East
5 Peoria West
6 Banner
7 Glendon
8 Pekin

ADJOINING 7.5' QUADRANGLE NAMES

ROAD CLASSIFICATION

Primary highway
hard surface
Secondary highway
hard surface
Interstate Route
U.S. Route
State Route
Light-duty road, hard or
improved surface
Unimproved road

HANNA CITY, IL
1996

DMA 3065 III NE-SERIES V863

9546481090876
9-554648-807-0 NEST