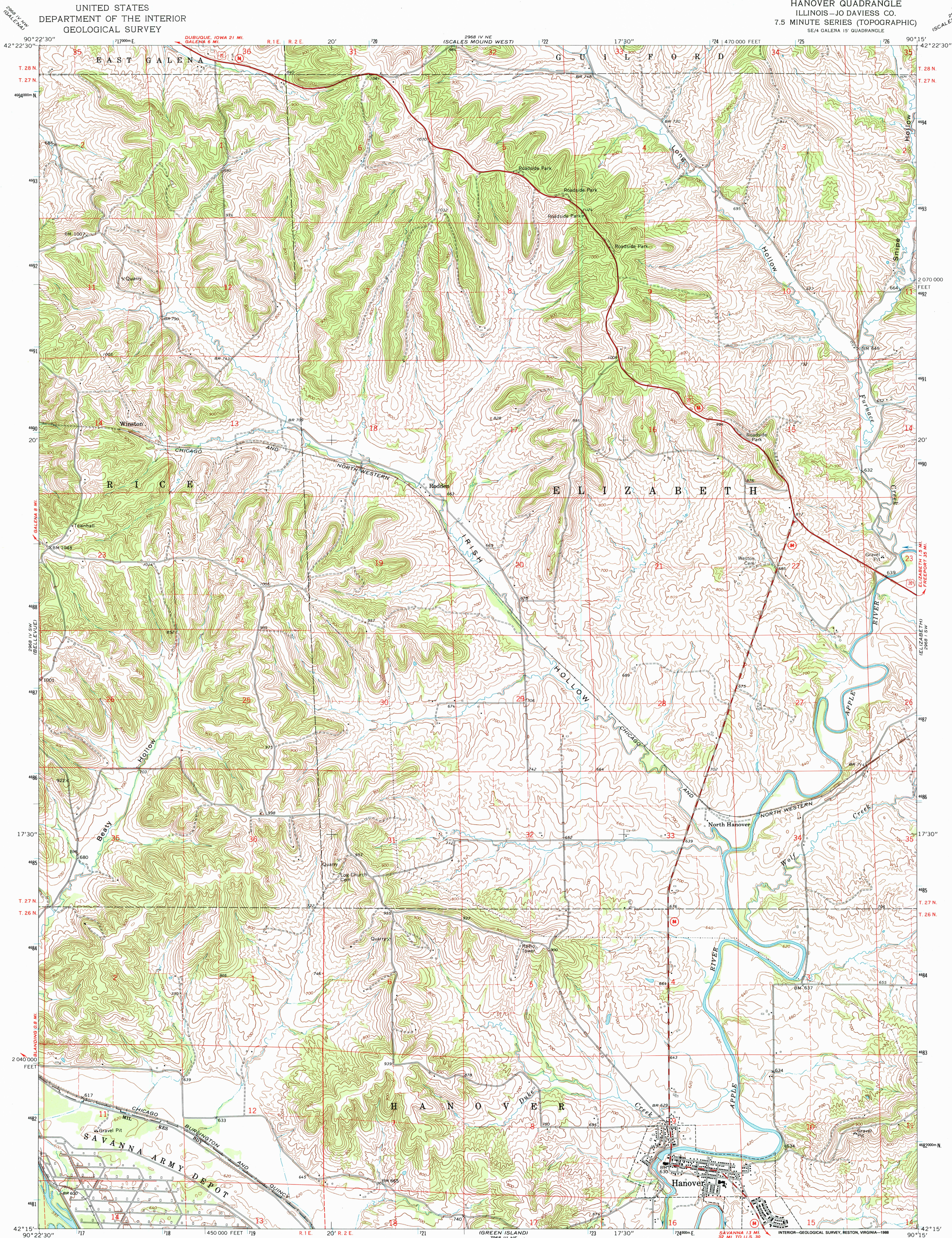


UNITED STATES
DEPARTMENT OF THE INTERIOR
GEOLOGICAL SURVEY

HANOVER QUADRANGLE
ILLINOIS—JO DAVIESS CO.
7.5 MINUTE SERIES (TOPOGRAPHIC)
SE/4 GALENA 15' QUADRANGLE



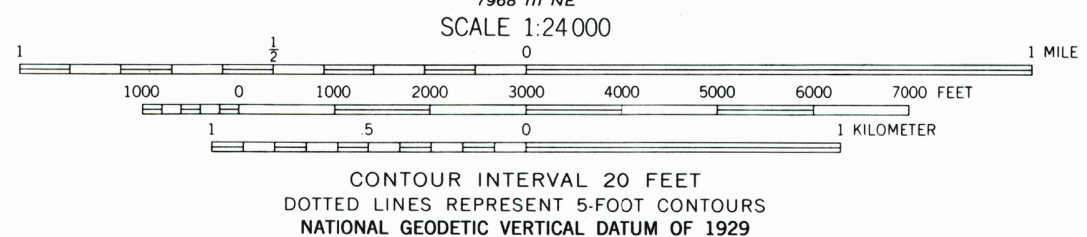
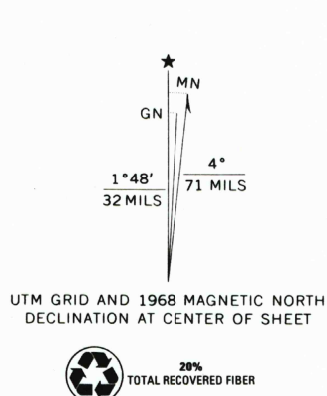
Maped, edited, and published by the Geological Survey

Control by USGS and USC&GS
Topography by photogrammetric methods from aerial
photographs taken 1966. Field checked 1968

Polyconic projection. 1927 North American datum
10,000-foot grid based on Illinois coordinate system, west zone
1000-meter Universal Transverse Mercator grid ticks,
zone 15, shown in blue

Fine red dashed lines indicate selected fence and field lines where
generally visible on aerial photographs. This information is unchecked

Map photoinspected 1975
No major culture or drainage changes observed



THIS MAP COMPLIES WITH NATIONAL MAP ACCURACY STANDARDS
FOR SALE BY U.S. GEOLOGICAL SURVEY, DENVER, COLORADO 80225, OR RESTON, VIRGINIA 22092
AND ILLINOIS GEOLOGICAL SURVEY, CHAMPAIGN, ILLINOIS 61820
A FOLDER DESCRIBING TOPOGRAPHIC MAPS AND SYMBOLS IS AVAILABLE ON REQUEST



QUADRANGLE LOCATION

To place on the predicted North American Datum 1983,
move the projection lines 3 meters north and
11 meters east as shown by dashed corner ticks

ROAD CLASSIFICATION

Primary highway, all weather, hard surface	Light-duty road, all weather, improved surface
Secondary highway, all weather, hard surface	Unimproved road, fair or dry weather
U. S. Route	State Route

HANOVER, ILL.
SE/4 GALENA 15' QUADRANGLE
42090-C3-TF-024

1968
PHOTOINSPECTED 1975
DMA 2968 IV SE—SERIES V853

RECEIVED

MAY 31 P.M.

USGS NMD
HISTORICAL MAP ARCHIVES

