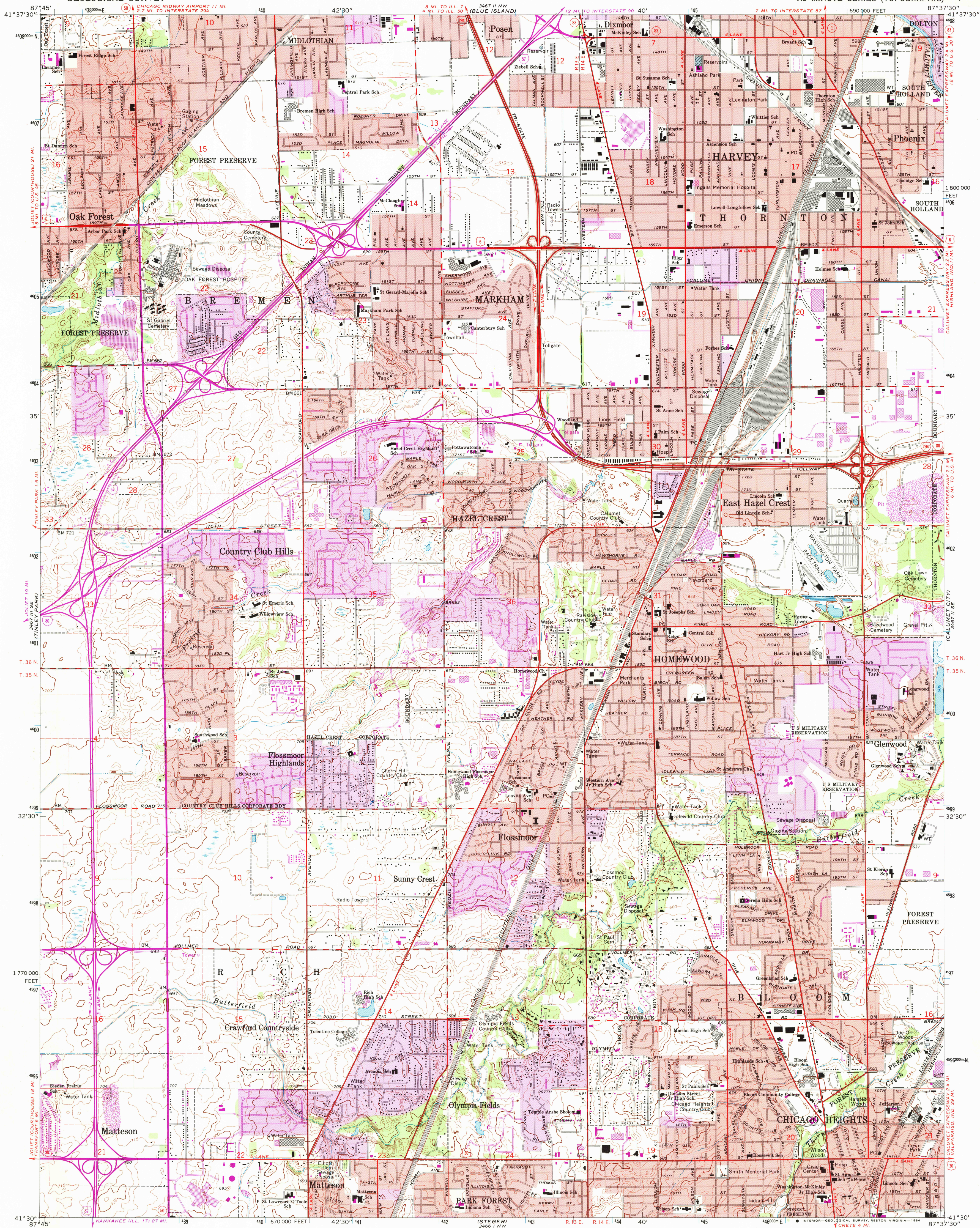


UNITED STATES
DEPARTMENT OF THE INTERIOR
GEOLOGICAL SURVEY

HARVEY QUADRANGLE
ILLINOIS-COOK CO.
7.5 MINUTE SERIES (TOPOGRAPHIC)



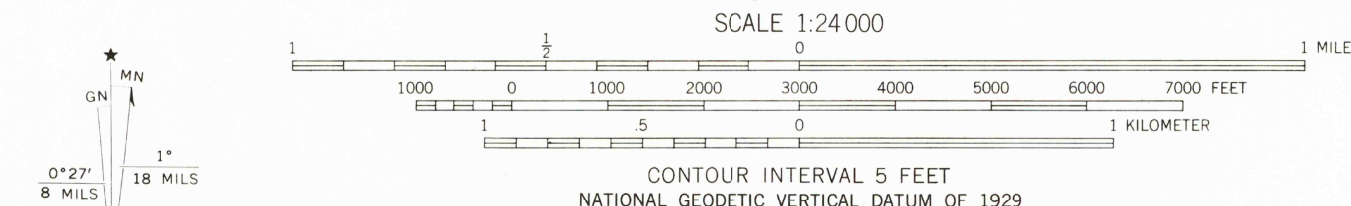
Mapped, edited, and published by the Geological Survey in cooperation with State of Illinois Geological Survey Control by USGS, USC&GS, and Cook County Highway Department Planimetry by photogrammetric methods from aerial photographs taken 1962-63. Topography by planetable surveys 1926. Revised 1963

Polyconic projection. 1927 North American datum 10,000-foot grid based on Illinois coordinate system, east zone 1000-meter Universal Transverse Mercator grid ticks, zone 16, shown in blue

To place on the predicted North American Datum 1983, move the projection lines 1 meter north and 4 meters east as shown by dashed corner ticks

Red tint indicates areas in which only landmark buildings are shown

Map photoinspected 1978
No major culture or drainage changes observed



THIS MAP COMPLIES WITH NATIONAL MAP ACCURACY STANDARDS FOR SALE BY U.S. GEOLOGICAL SURVEY, RESTON, VIRGINIA 22092 AND ILLINOIS GEOLOGICAL SURVEY, CHAMPAIGN, ILLINOIS 61820 A FOLDER DESCRIBING TOPOGRAPHIC MAPS AND SYMBOLS IS AVAILABLE ON REQUEST

ROAD CLASSIFICATION

Heavy-duty	Light-duty
Medium-duty	Unimproved dirt
Interstate Route	U.S. Route
	State Route

QUADRANGLE LOCATION

HARVEY, ILL.
N4130-W8737.5/7.5
PHOTOINSPECTED 1978
1963
PHOTOREVISED 1973
AMS 3467 II SW-SERIES V863