

UNITED STATES
DEPARTMENT OF THE INTERIOR
GEOLOGICAL SURVEY

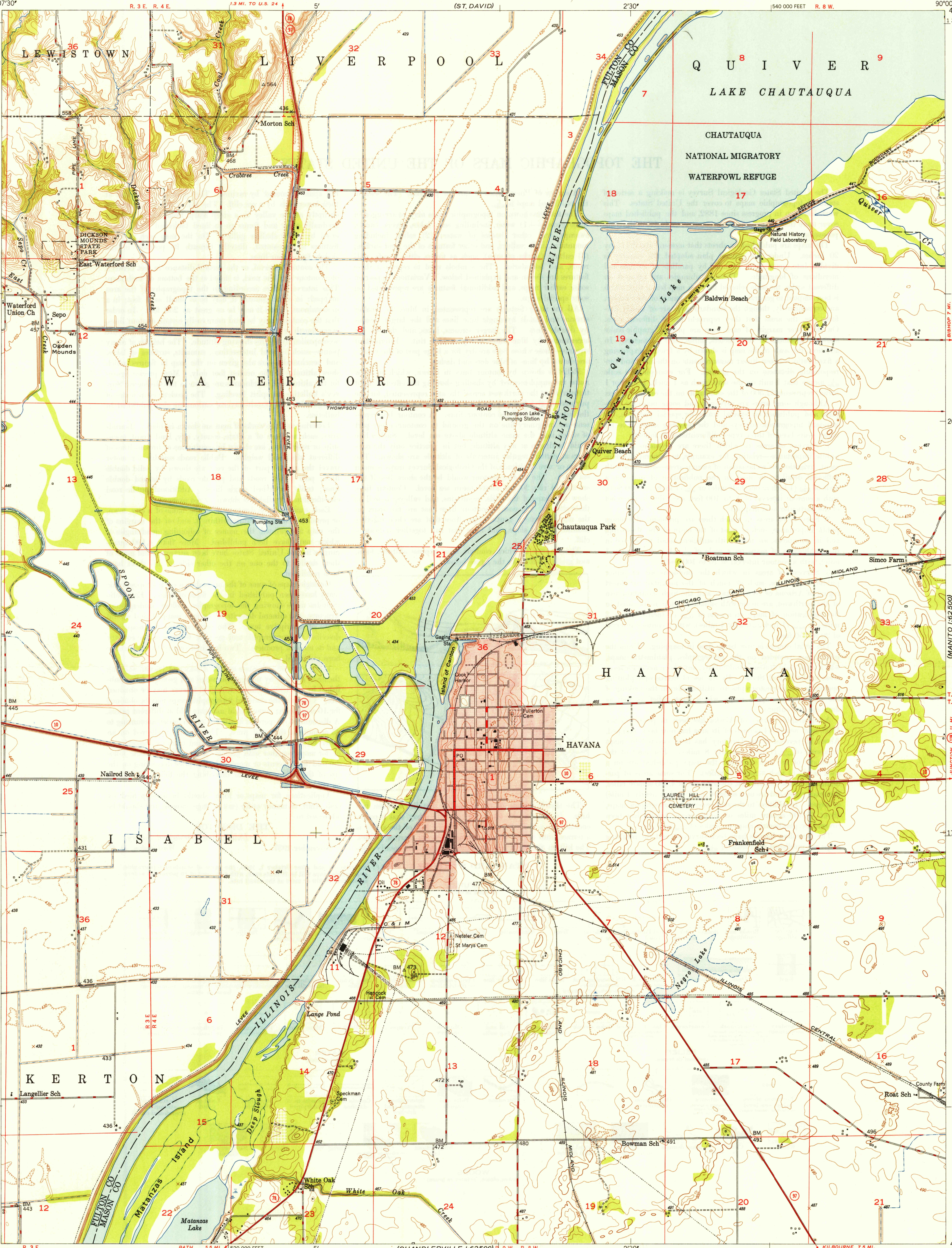
U. S. G. S.
FILE COPY
Inspection and Editing.

UNITED STATES
DEPARTMENT OF THE ARMY
CORPS OF ENGINEERS
(ST. DAVID)

HAVANA QUADRANGLE
ILLINOIS
7.5 MINUTE SERIES (TOPOGRAPHIC)

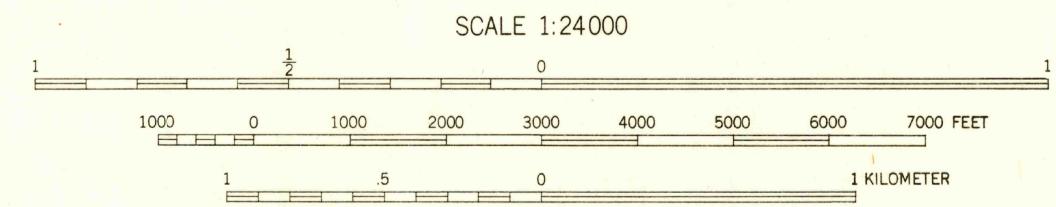
(MANITO 1:62500)

U. S. G. S.
FILE COPY
Inspection and Editing.



Mapped, edited, and published by the Geological Survey
Control by USC&GS, USGS, and USED
Culture and drainage in part compiled from
aerial photographs taken 1946
Topography by plane-table methods 1947
Polyconic projection. 1927 North American Datum
10,000 foot grid based on Illinois Coordinate System,
West Zone
Red tint indicates areas in which only
landmark buildings are shown

TRUE NORTH
MAGNETIC NORTH
APPROXIMATE MEAN
DECLINATION, 1947



CONTOUR INTERVAL 10 FEET
DASHED LINES REPRESENT HALF-INTERVAL CONTOURS
DATUM IS MEAN SEA LEVEL

THIS MAP COMPLIES WITH NATIONAL MAP ACCURACY STANDARDS
FOR SALE BY U. S. GEOLOGICAL SURVEY, WASHINGTON 25, D. C.

USGS
Historical File
Topographic Division

ROAD CLASSIFICATION	
HARD-SURFACE ALL WEATHER ROADS	DRY WEATHER ROADS
Heavy-duty 4 LANE 6 LANE	Improved dirt
Medium-duty 4 LANE 6 LANE	Unimproved dirt
Loose-surface or narrow hard-surface	

WOODLAND
Woods—Brushwood
Orchard

U. S. G. S.
FILE COPY
Inspection and Editing.

HAVANA, ILL.
N4015-W9000/7.5
PRINTED 1948