

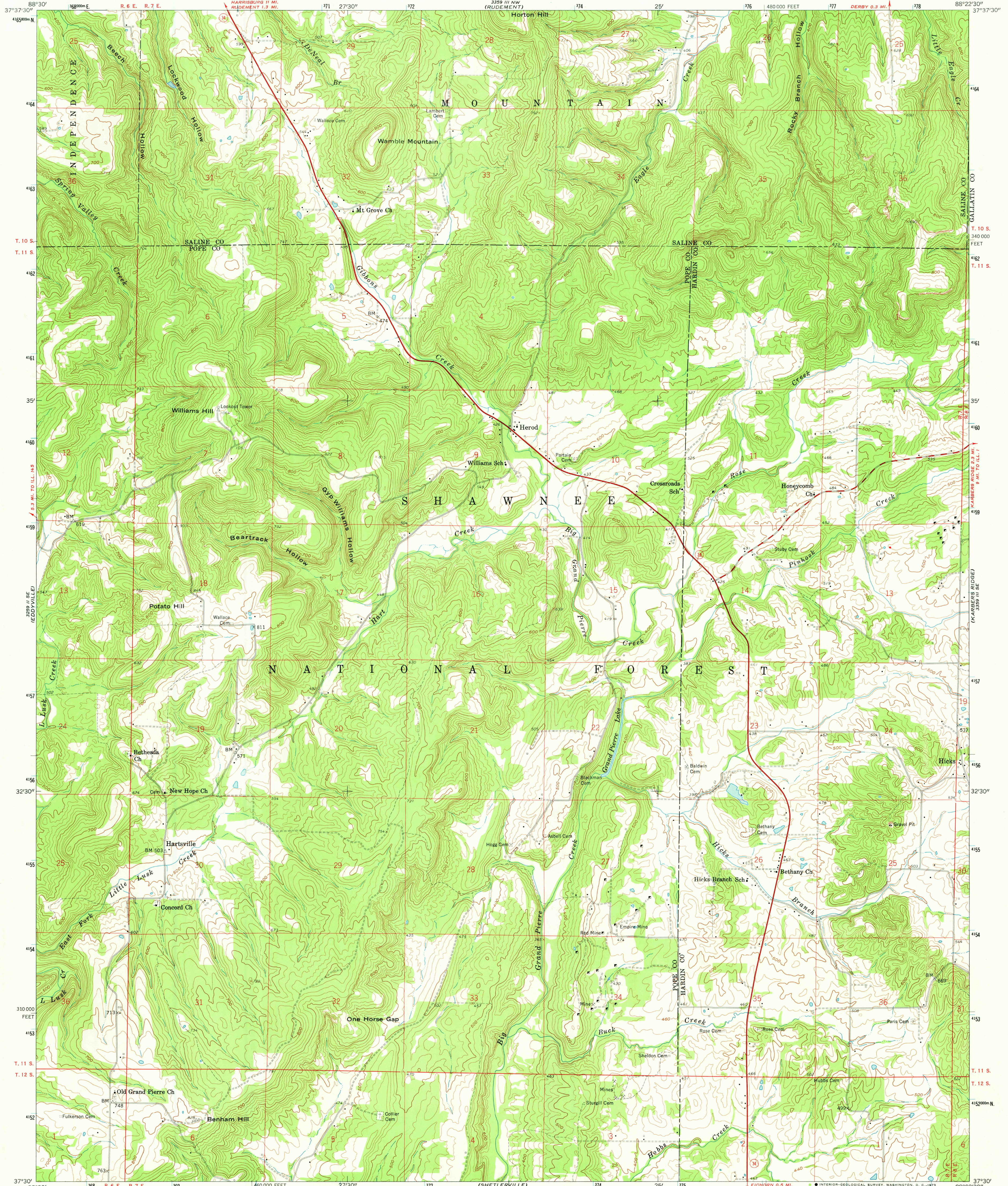
2250 11 NE  
(WALTERS) 3259 11 SE

UNITED STATES  
DEPARTMENT OF THE INTERIOR  
GEOLOGICAL SURVEY

STATE OF ILLINOIS  
WILLIAM G. STRATTON, GOVERNOR  
DEPARTMENT OF REGISTRATION AND EDUCATION  
VERA M. BINKS, DIRECTOR  
GEOLOGICAL SURVEY DIVISION, JOHN C. FRYE, CHIEF  
URBANA, ILLINOIS

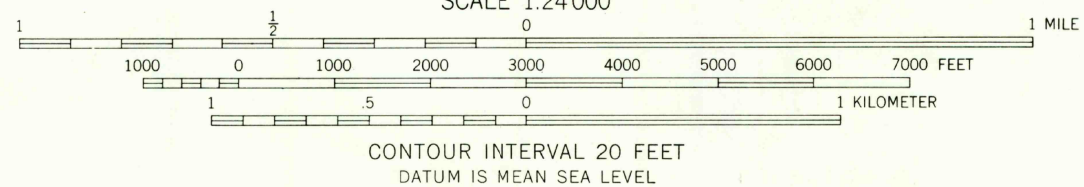
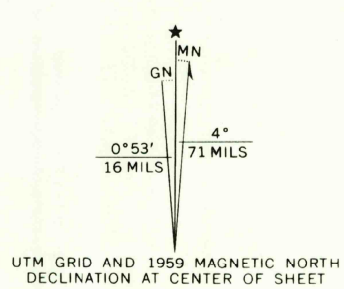
HEROD QUADRANGLE  
ILLINOIS  
7.5 MINUTE SERIES (TOPOGRAPHIC)  
SW 1/4 EQUALITY 15' QUADRANGLE

3259 11 NE  
(WALTERS) 3259 11 SE



2250 11 NE  
(WALTERS) 3259 11 SE

Maped, edited, and published by the Geological Survey  
Control by USGS and USC&GS  
Topography from aerial photographs by photogrammetric methods  
Aerial photographs taken 1957. Field check 1959  
Polyconic projection. 1927 North American datum  
10,000-foot grid based on Illinois coordinate system, east zone  
1000-meter Universal Transverse Mercator grid ticks,  
zone 16, shown in blue



ROAD CLASSIFICATION  
Heavy-duty ——— Light-duty ———  
Medium-duty ——— Unimproved dirt ———  
Slate Route ———

HEROD, ILL.  
SW 1/4 EQUALITY 15' QUADRANGLE  
N 3730-W 8822.5/7.5

1959  
AMS 3359 11 SW-SERIES V863

THIS MAP COMPLIES WITH NATIONAL MAP ACCURACY STANDARDS  
FOR SALE BY U. S. GEOLOGICAL SURVEY, WASHINGTON, D. C. 20242  
AND BY THE STATE GEOLOGICAL SURVEY, URBANA, ILLINOIS 61801  
A FOLDER DESCRIBING TOPOGRAPHIC MAPS AND SYMBOLS IS AVAILABLE ON REQUEST

2080