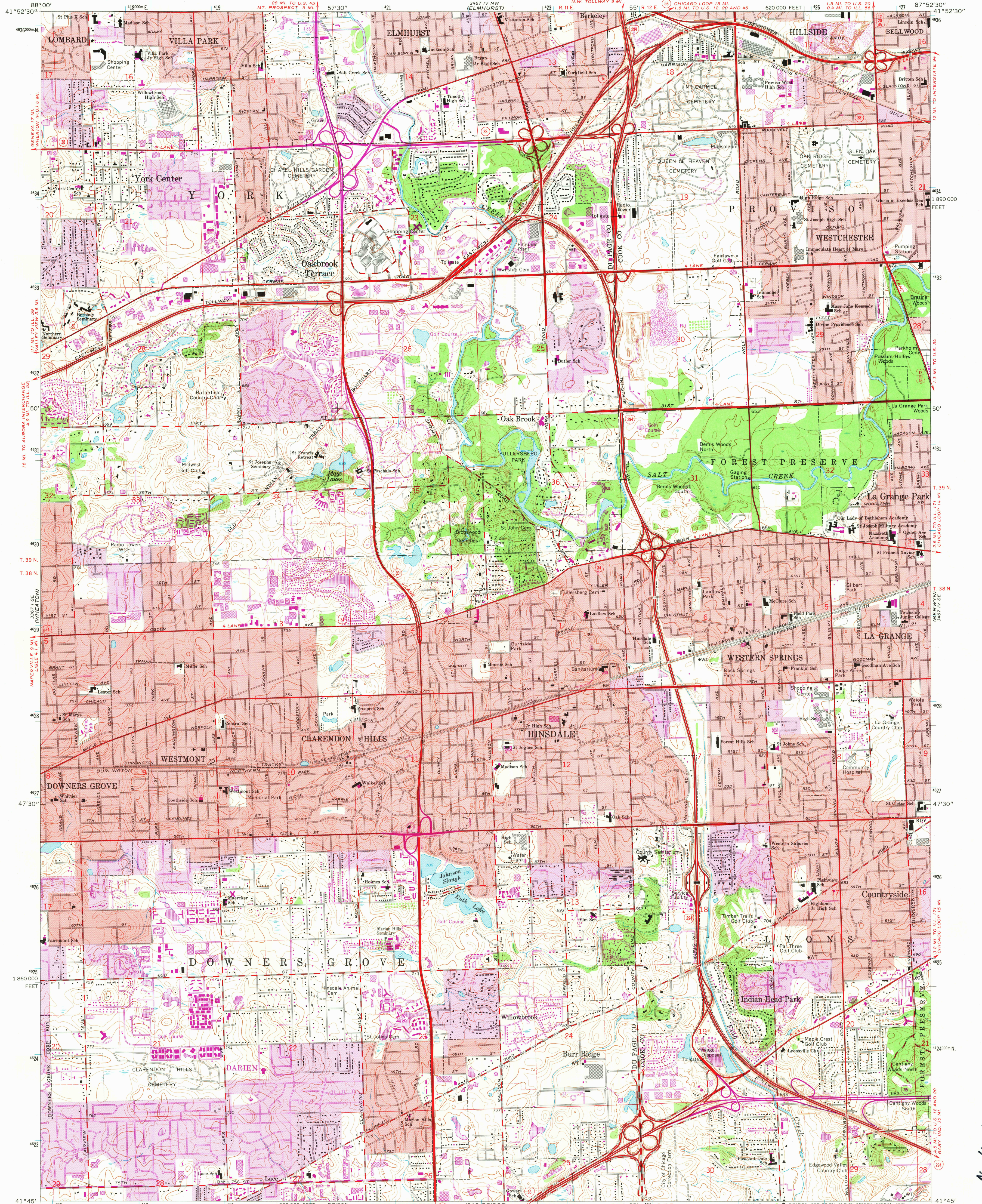


UNITED STATES
DEPARTMENT OF THE INTERIOR
GEOLOGICAL SURVEY

HINSDALE QUADRANGLE
ILLINOIS
7.5 MINUTE SERIES (TOPOGRAPHIC)

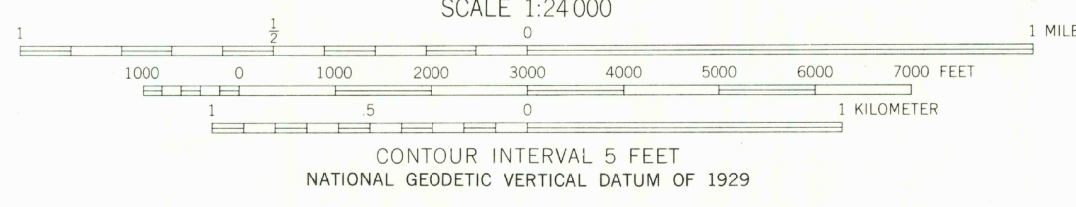
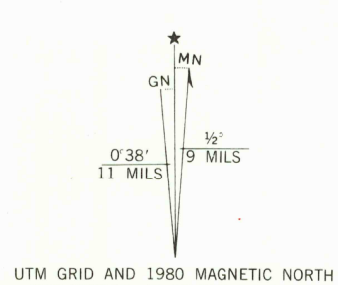


Mapped, edited, and published by the Geological Survey
in cooperation with State of Illinois Geological Survey
Control by USGS, USC&GS, and Cook County Highway Department
Planimetry by photogrammetric methods from aerial photographs
taken 1962-63. Topography by planetable surveys 1925
Revised 1963.

Polyconic projection. 1927 North American datum
10,000-foot grid based on Illinois coordinate system, east zone
1000-meter Universal Transverse Mercator grid ticks,
zone 16, shown in blue.

Red tint indicates areas in which only landmark buildings are shown
To place on the predicted North American Datum 1983
move the projection lines 2 meters north and
5 meters east as shown by dashed corner ticks.

There may be private inholdings within the boundaries of the
National or State reservations shown on this map.



THIS MAP COMPLIES WITH NATIONAL MAP ACCURACY STANDARDS
FOR SALE BY U. S. GEOLOGICAL SURVEY, RESTON, VIRGINIA 22092
AND BY THE STATE GEOLOGICAL SURVEY, URBANA, ILLINOIS 61801
A FOLDER DESCRIBING TOPOGRAPHIC MAPS AND SYMBOLS IS AVAILABLE ON REQUEST

ROAD CLASSIFICATION

Heavy-duty	Light-duty
Medium-duty	Unimproved dirt
Interstate Route	U. S. Route
	State Route

QUADRANGLE LOCATION

HINSDALE, ILL.
N4145-W8752.5/7.5

1963
PHOTOREVISED 1972 AND 1980
DMA 3467 IV SW-SERIES V863

Revisions shown in purple compiled from aerial photographs
taken 1972 and 1978. Map edited 1980
This information not field checked
Purple tint indicates extension of urban area

USGS
Historical File
National Marine
MAY 5 1981
3200