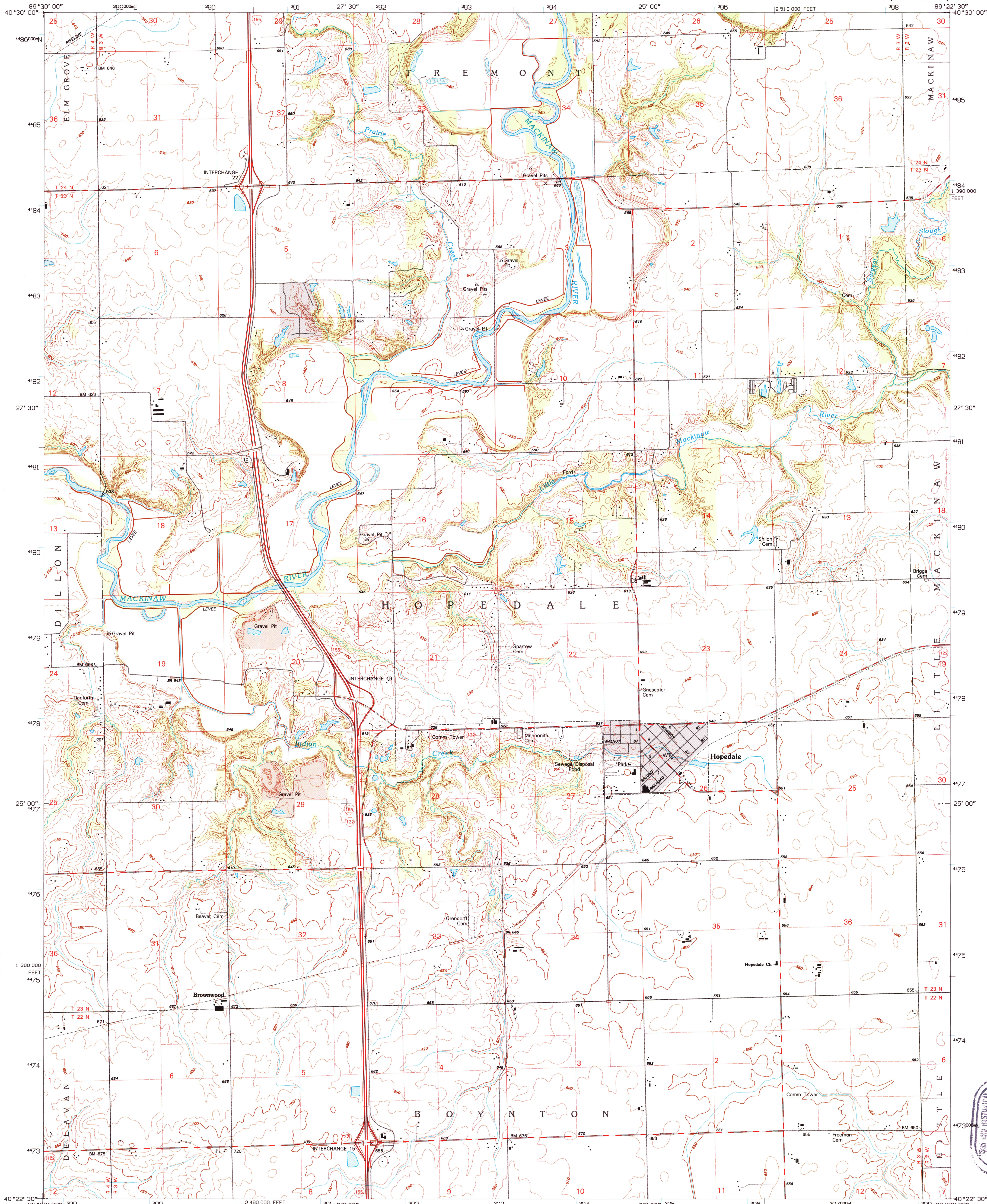


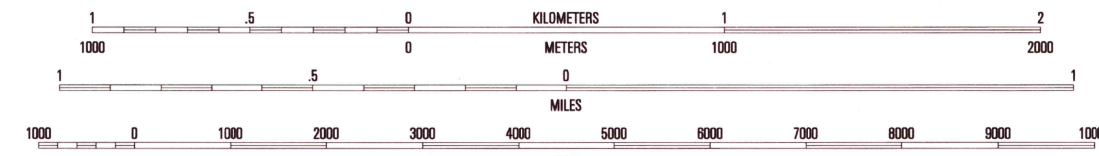
UNITED STATES
DEPARTMENT OF THE INTERIOR
GEOLOGICAL SURVEY

HOPEDALE QUADRANGLE
ILLINOIS-TAZEWELL CO.
7.5-MINUTE SERIES (TOPOGRAPHIC)



Produced by the United States Geological Survey
in cooperation with State of Illinois agencies
Compiled by photogrammetric methods from imagery dated 1970
Field checked 1971. Revised from imagery dated 1994 and other
sources. Field checked 1995. Map edited 1996
North American Datum of 1983 (NAD 83). Projection and
blue 1000-foot ticks: Illinois Coordinate System of 1983 (west zone)
North American Datum of 1927 (NAD 27) is shown by dashed
corner ticks. The values of the shift between NAD 83 and NAD 27
for 7.5-minute intersections are obtainable from National Geodetic
Survey NADCON software

UTM GRID AND 1996 MAGNETIC NORTH
DECLINATION AT CENTER OF SHEET



SCALE 1:24 000
CONTOUR INTERVAL 10 FEET
NATIONAL GEODETIC VERTICAL DATUM OF 1929

THIS MAP COMPLIES WITH NATIONAL MAP ACCURACY STANDARDS
FOR SALE BY U.S. GEOLOGICAL SURVEY, DENVER, COLORADO 80225, OR RESTON, VIRGINIA 22092
AND ILLINOIS GEOLOGICAL SURVEY, CHAMPAIGN, ILLINOIS 61820
A FOLDER DESCRIBING TOPOGRAPHIC MAPS AND SYMBOLS IS AVAILABLE ON REQUEST



QUADRANGLE LOCATION

1	2	3
4	5	6
7	8	

ROAD CLASSIFICATION
Primary highway Light-duty road, hard or
hard surface Improved surface
Secondary highway Unimproved road
Interstate Route U.S. Route State Route

HOPEDALE, IL
40089-D4-TF-024
1995

DMA 3164 IV NW-SERIES V863

