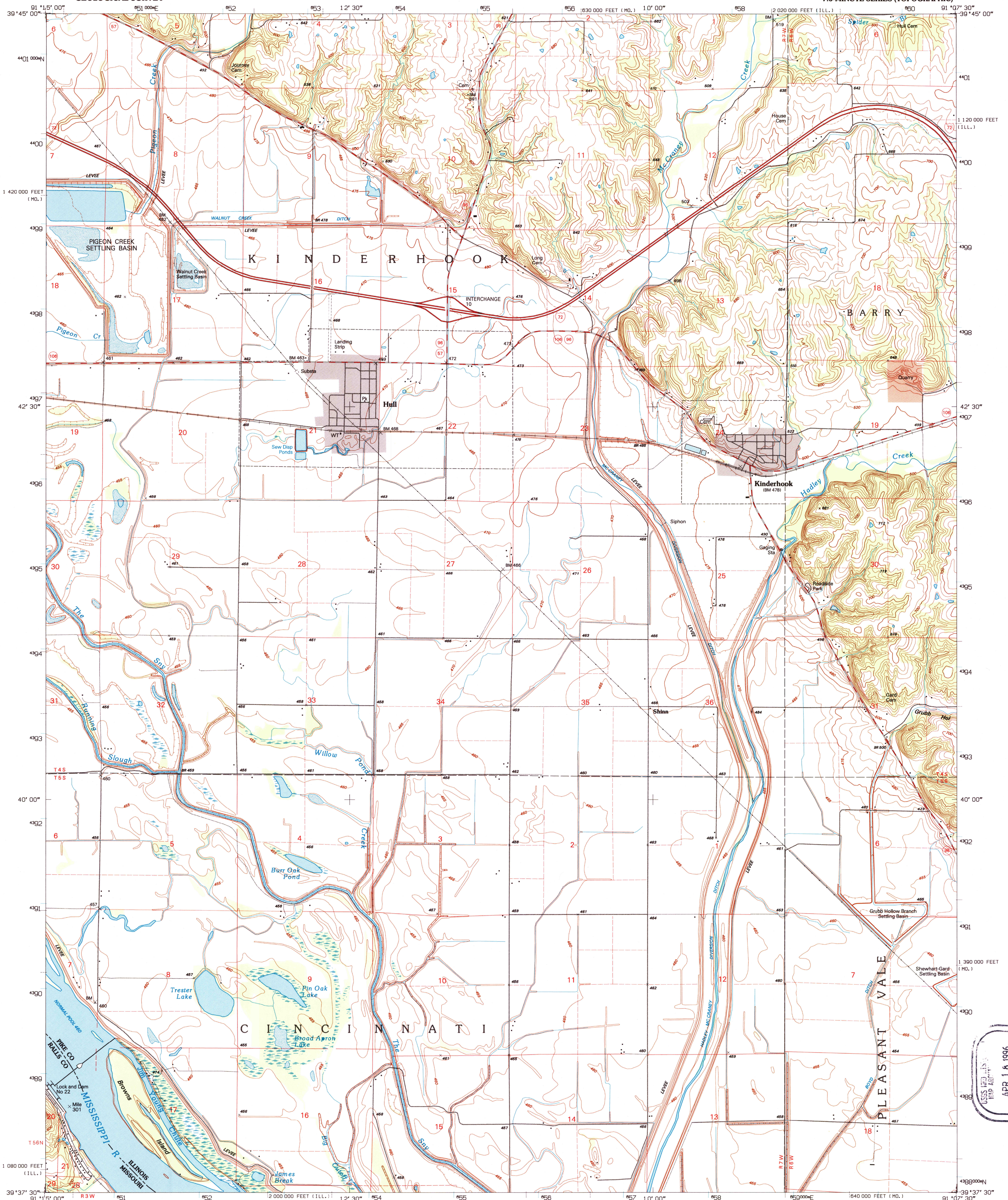


UNITED STATES
DEPARTMENT OF THE INTERIOR
GEOLOGICAL SURVEY

HULL QUADRANGLE
ILLINOIS-MISSOURI
7.5-MINUTE SERIES (TOPOGRAPHIC)

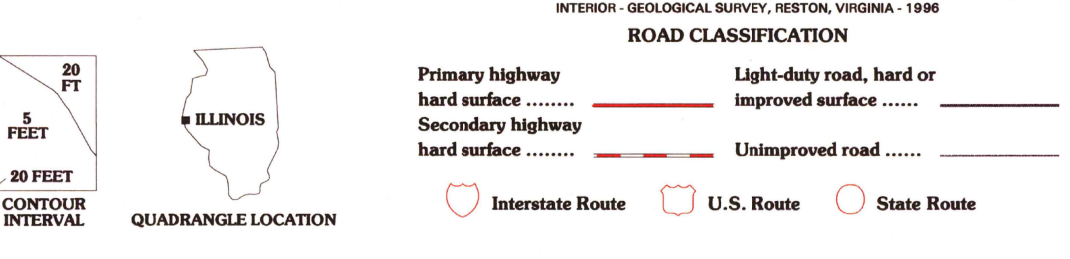
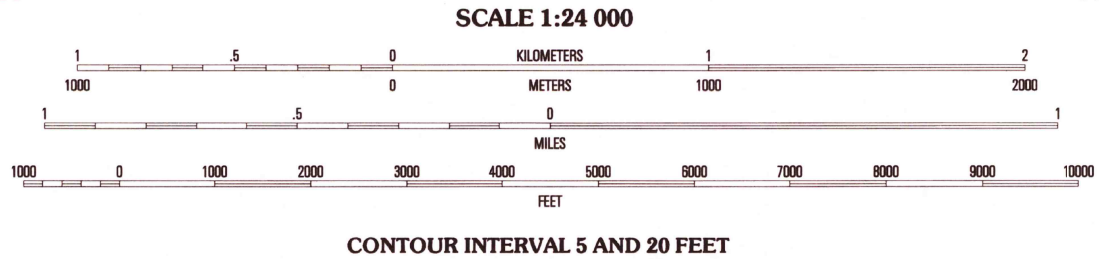
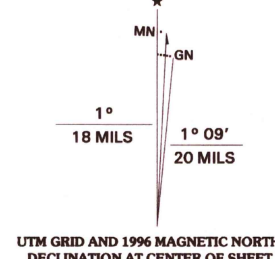


Produced by the United States Geological Survey
in cooperation with U.S. Corps of Engineers

Compiled by photogrammetric methods from imagery dated 1972
and 1974. Field checked 1973. Revised from imagery dated 1993
PLSS and survey control current as of 1973. Map edited 1996
Contours not revised. Contours that conflict with revised
planimetry are dashed

North American Datum of 1983 (NAD 83). Projection and
blue 1000-meter ticks: Universal Transverse Mercator, zone 15
10 000-foot ticks: Illinois (west zone) and Missouri (east zone)
Coordinate Systems of 1983

North American Datum of 1927 (NAD 27) is shown by dashed
corner ticks. The values of the shift between NAD 83 and NAD 27
for 7.5-minute intersections are obtainable from National Geodetic
Survey NADCON software



1	2	3	4	5	6	7	8
1 Marklehead	2 Payson	3 Richfield	4 Hannibal East	5 Barry	6 Hannibal SE	7 Ashburn	8 Rockport

THIS MAP COMPLIES WITH NATIONAL MAP ACCURACY STANDARDS
FOR SALE BY U.S. GEOLOGICAL SURVEY, DENVER, COLORADO 80225, OR RESTON, VIRGINIA 22092
ILLINOIS GEOLOGICAL SURVEY, CHAMPAIGN, ILLINOIS 61820
AND DIVISION OF GEOLOGY AND LAND SURVEY
MISSOURI DEPARTMENT OF NATURAL RESOURCES, ROLLA, MISSOURI 65401
A FOLDER DESCRIBING TOPOGRAPHIC MAPS AND SYMBOLS IS AVAILABLE ON REQUEST

HULL, IL-MO
39091-F2-TF-024
1993
DMA 2763 II NW-SERIES-V863

