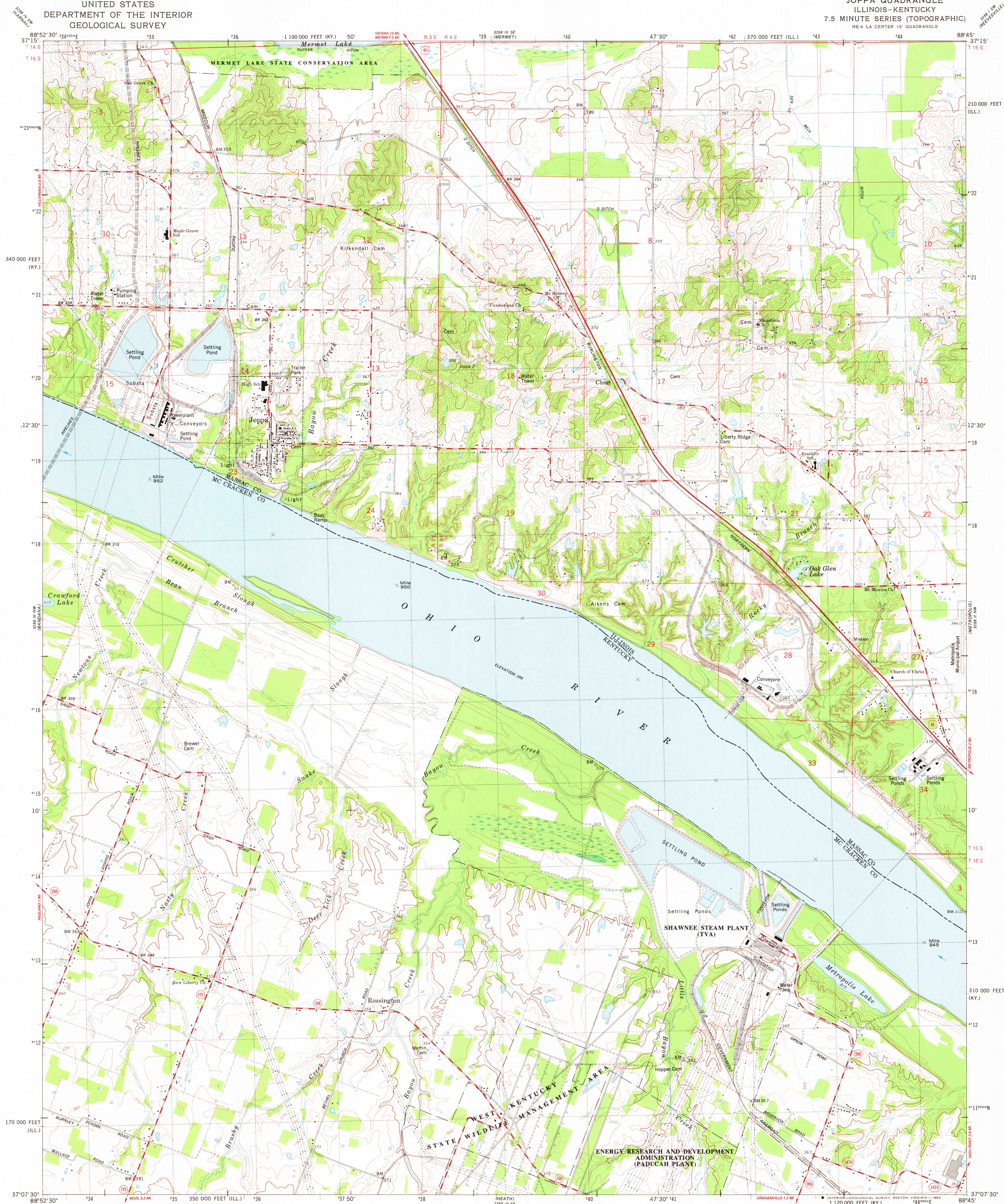


UNITED STATES
DEPARTMENT OF THE INTERIOR
GEOLOGICAL SURVEY

JOPPA QUADRANGLE
ILLINOIS-KENTUCKY
7.5 MINUTE SERIES (TOPOGRAPHIC)
NE/4 LA CENTER 15' QUADRANGLE



Mapped, edited, and published by the Geological Survey in cooperation with Kentucky Geological Survey
Control by USGS, NGS/NOAA, USACE, and Tennessee Valley Authority
Topography of Illinois area by photogrammetric methods from aerial photographs taken 1965. Field checked 1967. Planimetry of Kentucky area by photogrammetric methods from aerial photographs taken 1952
Topography by planetable surveys 1954. Revised from aerial photographs taken 1978. Field checked 1978. Map edited 1982
Polyconic projection. 10,000-foot grid ticks based on Illinois coordinate system, east zone and Kentucky coordinate system, south zone 1000-meter Universal Transverse Mercator grid, zone 16
To place on the predicted North American Datum 1983 move the projection lines 4 meters south and 5 meters east as shown by dashed corner ticks
Fine red dashed lines indicate selected fence and field lines where generally visible on aerial photographs. This information is unchecked
The state boundary as shown represents the approximate position of the low waterline as determined from U.S. Corps of Engineers Ohio River Charts, surveyed 1912, and supplementary information
There may be private inholdings within the boundaries of the National or State reservations shown on this map

SCALE 1:24 000
1 000 2000 3000 4000 5000 6000 7000 FEET
1 KILOMETER

CONTOUR INTERVAL 10 FEET
DOTTED LINES REPRESENT 5-FOOT CONTOURS
NATIONAL GEODETIC VERTICAL DATUM OF 1929
THIS MAP COMPLIES WITH NATIONAL MAP ACCURACY STANDARDS
FOR SALE BY U.S. GEOLOGICAL SURVEY, RESTON, VIRGINIA 22092,
ILLINOIS GEOLOGICAL SURVEY, CHAMPAIGN, ILLINOIS 61820,
KENTUCKY GEOLOGICAL SURVEY, LEXINGTON, KENTUCKY 40506,
AND KENTUCKY DEPARTMENT OF COMMERCE, FRANKFORT, KENTUCKY 40601
A FOLDER DESCRIBING TOPOGRAPHIC MAPS AND SYMBOLS IS AVAILABLE ON REQUEST

ROAD CLASSIFICATION
Primary highway, hard surface
Secondary highway, hard surface
Light-duty road, hard or improved surface
Unimproved road
Interstate Route
U. S. Route
State Route

JOPPA, ILL.-KY.
NE/4 LA CENTER 15' QUADRANGLE
N3707.5-W8845/7.5
1982
DMA 3258 III NE-SERIES W863