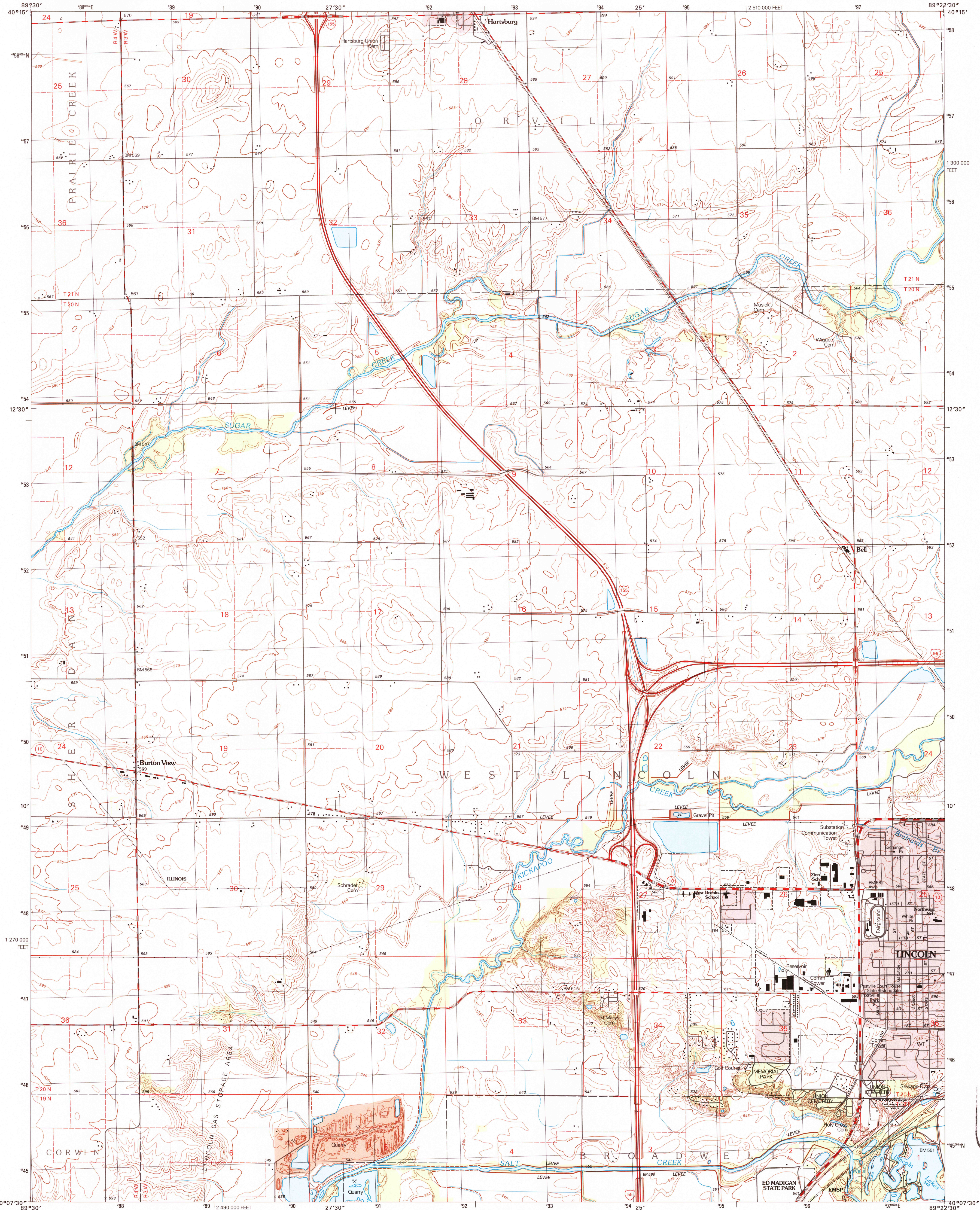


UNITED STATES
DEPARTMENT OF THE INTERIOR
GEOLOGICAL SURVEY

LINCOLN WEST QUADRANGLE
ILLINOIS-LOGAN CO.
7.5-MINUTE SERIES (TOPOGRAPHIC)



U.S. GEOLOGICAL SURVEY
MAR 31 1997
REC'D FILE COPY

Produced by the United States Geological Survey
in cooperation with State of Illinois agencies
Compiled by photogrammetric methods from imagery dated 1973
Field checked 1975. Revised from imagery dated 1994-95, and
other sources. Field checked 1996. Map edited 1997
North American Datum of 1983 (NAD 83). Projection and
1000-meter grid: Universal Transverse Mercator, zone 16
10 000-foot ticks: Illinois Coordinate System of 1983 (west zone)
North American Datum of 1927 (NAD 27) is shown by dashed
corner ticks. The values of the shift between NAD 83 and NAD 27
for 7.5-minute intersections are obtainable from National Geodetic
Survey NADCON software
There may be private inholdings within the boundaries of the
National or State reservations shown on this map

UTM GRID AND 1997 MAGNETIC NORTH
DECLINATION AT CENTER OF SHEET

SCALE 1:24 000
KILOMETERS
METERS
MILES
FEET
CONTOUR INTERVAL 5 FEET
NATIONAL GEODETIC VERTICAL DATUM OF 1929
TO CONVERT FROM FEET TO METERS, MULTIPLY BY 0.3048

ROAD CLASSIFICATION
Primary highway
hard surface
Secondary highway
hard surface
Unimproved road
Light-duty road, hard or
improved surface
Interstate Route
U.S. Route
State Route
QUADRANGLE LOCATION
ADJOINING 7.5' QUADRANGLE NAMES
1 Delavan South
2 Erden
3 Arrington
4 New Holland
5 Lincoln East
6 Middletown
7 Broadwell
8 Mount Pulaski
LINCOLN WEST, IL
1996
DMA 3164 III NW-SERIES V863

780609785409676
9