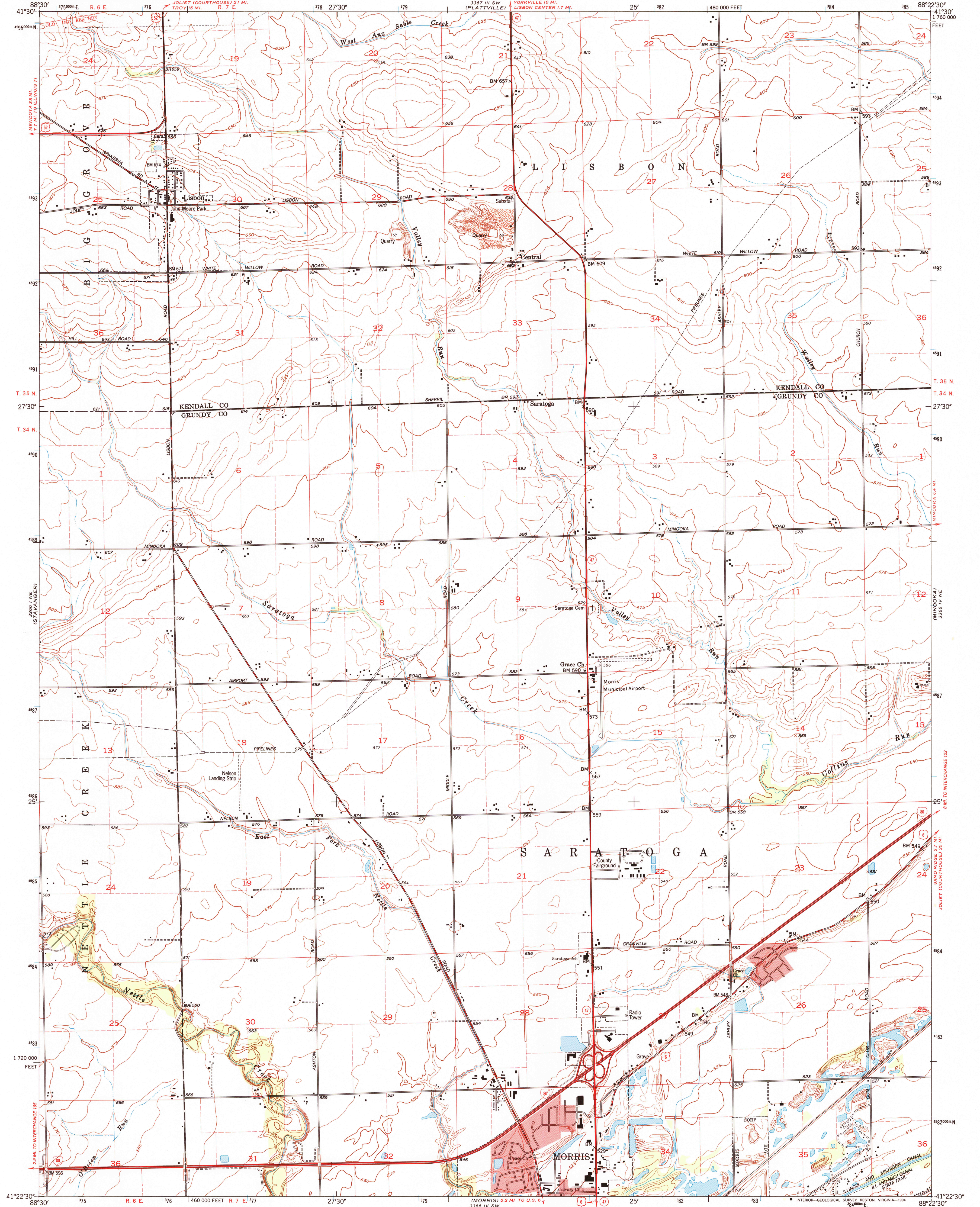


3867 1/2 SE (NEWARK)

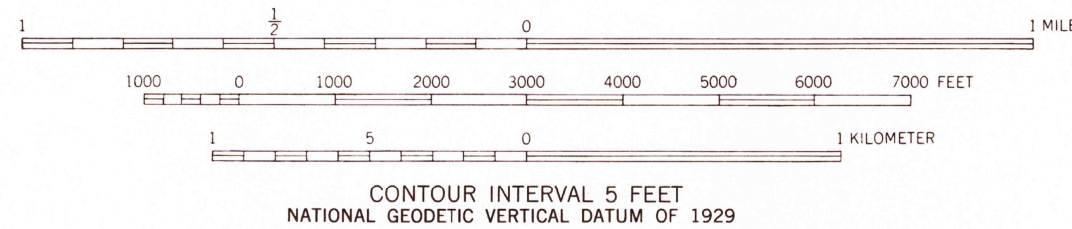
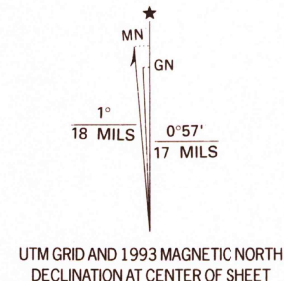
UNITED STATES  
DEPARTMENT OF THE INTERIOR  
GEOLOGICAL SURVEY

LISBON QUADRANGLE  
ILLINOIS  
7.5 MINUTE SERIES (TOPOGRAPHIC)  
NW/4 MORRIS 15' QUADRANGLE

3867 1/2 SE (YORKVILLE SE)  
3867 1/2 SE (YORKVILLE SE)



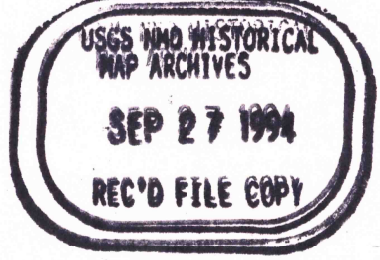
Produced by the United States Geological Survey  
Control by USGS and NOS/NOAA  
Planimetry by photogrammetric methods from aerial photographs taken 1952. Topography by planetable surveys 1953. Revised from aerial photographs taken 1988. Field checked 1991  
Map edited 1993  
Projection and 10,000-foot grid ticks: Illinois coordinate system, east zone (transverse Mercator)  
1000-meter Universal Transverse Mercator grid ticks, zone 16, shown in blue  
1927 North American Datum (NAD 27)  
North American Datum of 1983 (NAD 83) is shown by dashed corner ticks  
The values of the shift between NAD 27 and NAD 83 for 7.5-minute intersections are given in USGS Bulletin 1875  
Red tint indicates areas in which only landmark buildings are shown  
Fine red dashed lines indicate selected fence and field lines where generally visible on aerial photographs. This information is unchecked



COMPLIES WITH U.S. GEOLOGICAL SURVEY STANDARDS FOR SPATIAL ACCURACY-CLASS 2  
FOR SALE BY U. S. GEOLOGICAL SURVEY, DENVER, COLORADO 80225, OR RESTON, VIRGINIA 22092  
AND ILLINOIS GEOLOGICAL SURVEY, CHAMPAIGN, ILLINOIS 61820  
A FOLDER DESCRIBING TOPOGRAPHIC MAPS AND SYMBOLS IS AVAILABLE ON REQUEST



ROAD CLASSIFICATION  
Primary highway, hard surface  
Secondary highway, hard surface  
Light-duty road, hard or improved surface  
Unimproved road  
Interstate Route  
U. S. Route  
State Route



LISBON, ILL.  
NW/4 MORRIS 15' QUADRANGLE  
41088-D4-TF-024  
1993  
DMA 3366 IV NW - SERIES V863