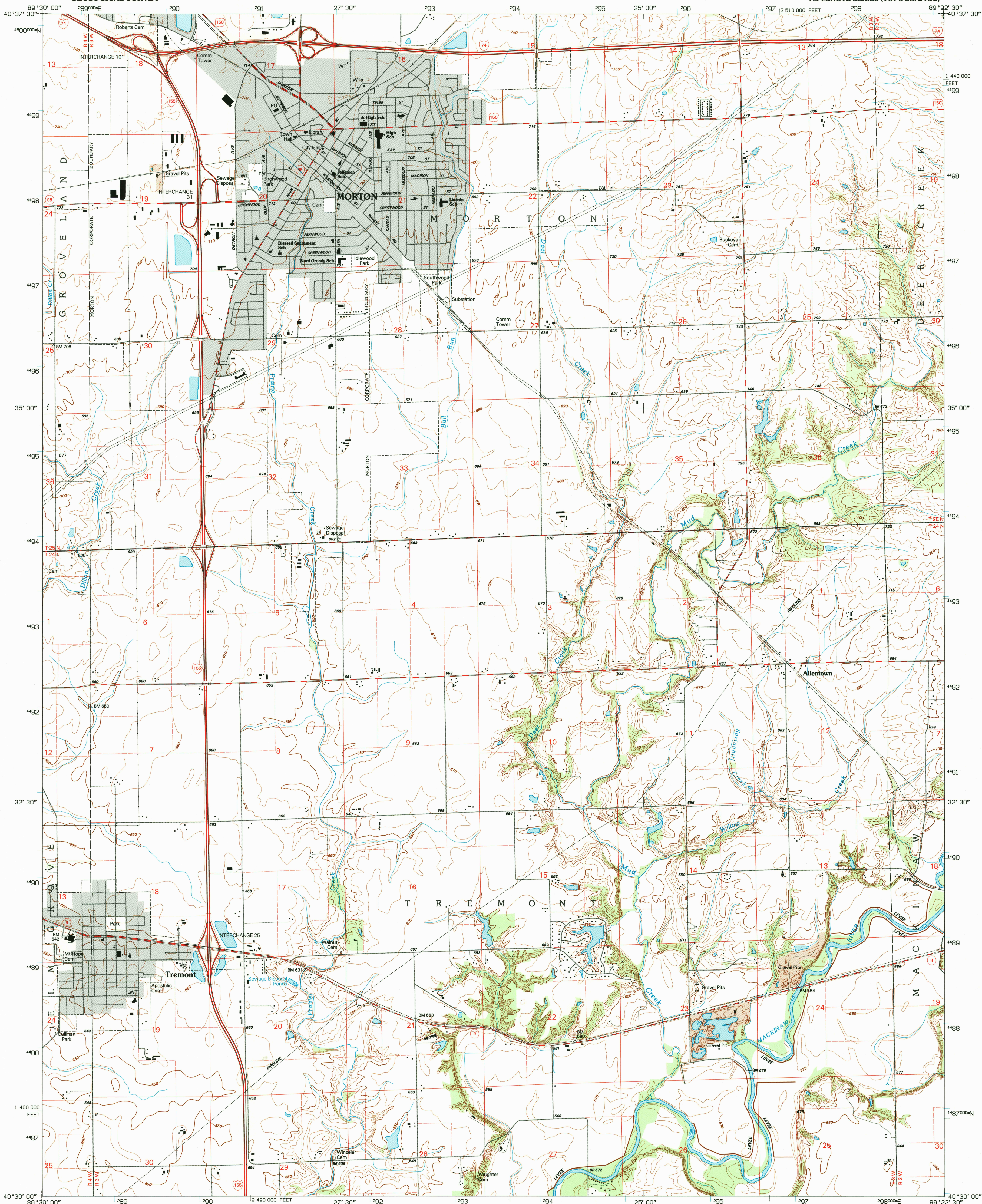


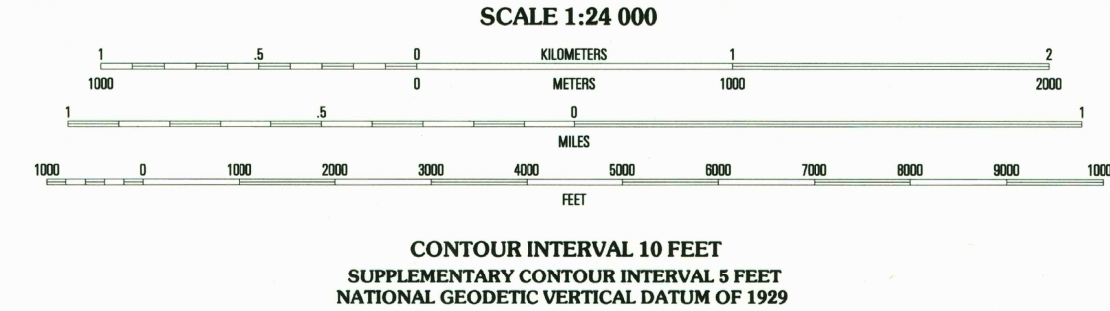
UNITED STATES
DEPARTMENT OF THE INTERIOR
GEOLOGICAL SURVEY

MORTON QUADRANGLE
ILLINOIS-TAZEWELL CO.
7.5-MINUTE SERIES (TOPOGRAPHIC)



Produced by the United States Geological Survey
in cooperation with State of Illinois agencies
Compiled by photogrammetric methods from imagery dated 1968
Field checked 1970. Revised from imagery dated 1994
and other sources. Field checked 1995. Map edited 1996
North American Datum of 1983 (NAD 83). Projection and
blue 1000-meter ticks: Universal Transverse Mercator, zone 16
10 000-foot ticks: Illinois Coordinate System of 1983 (west zone)
North American Datum of 1927 (NAD 27) is shown by dashed
corner ticks. The values of the shift between NAD 83 and NAD 27
for 7.5-minute intersections are obtainable from National Geodetic
Survey NADCON software

UTM GRID AND 1996 MAGNETIC NORTH
DECLINATION AT CENTER OF SHEET



THIS MAP COMPLIES WITH NATIONAL MAP ACCURACY STANDARDS
FOR SALE BY U.S. GEOLOGICAL SURVEY, DENVER, COLORADO 80225, OR RESTON, VIRGINIA 22092
AND ILLINOIS GEOLOGICAL SURVEY, CHAMPAIGN, ILLINOIS 61820
A FOLDER DESCRIBING TOPOGRAPHIC MAPS AND SYMBOLS IS AVAILABLE ON REQUEST

ROAD CLASSIFICATION

Primary highway
hard surface
Secondary highway
hard surface

Light-duty road, hard or
improved surface
Unimproved road

Interstate Route U.S. Route State Route

QUADRANGLE LOCATION

1	2	3
4	5	6
7	8	9

1 Peoria East
2 Washington
3 Eureka
4 Marquette Heights
5 Macdonald
6 Delevan North
7 Hopdale
8 Miner

U.S. GEOLOGICAL SURVEY
MAP ARCHIVES
SEP 26 1996
REC'D FILE COPY

MORTON, IL
40089-E4-TF-024
1995
DMA 3165 III SW-SERIES V863

ISBN 0-607-65736-5
9 780607 657365