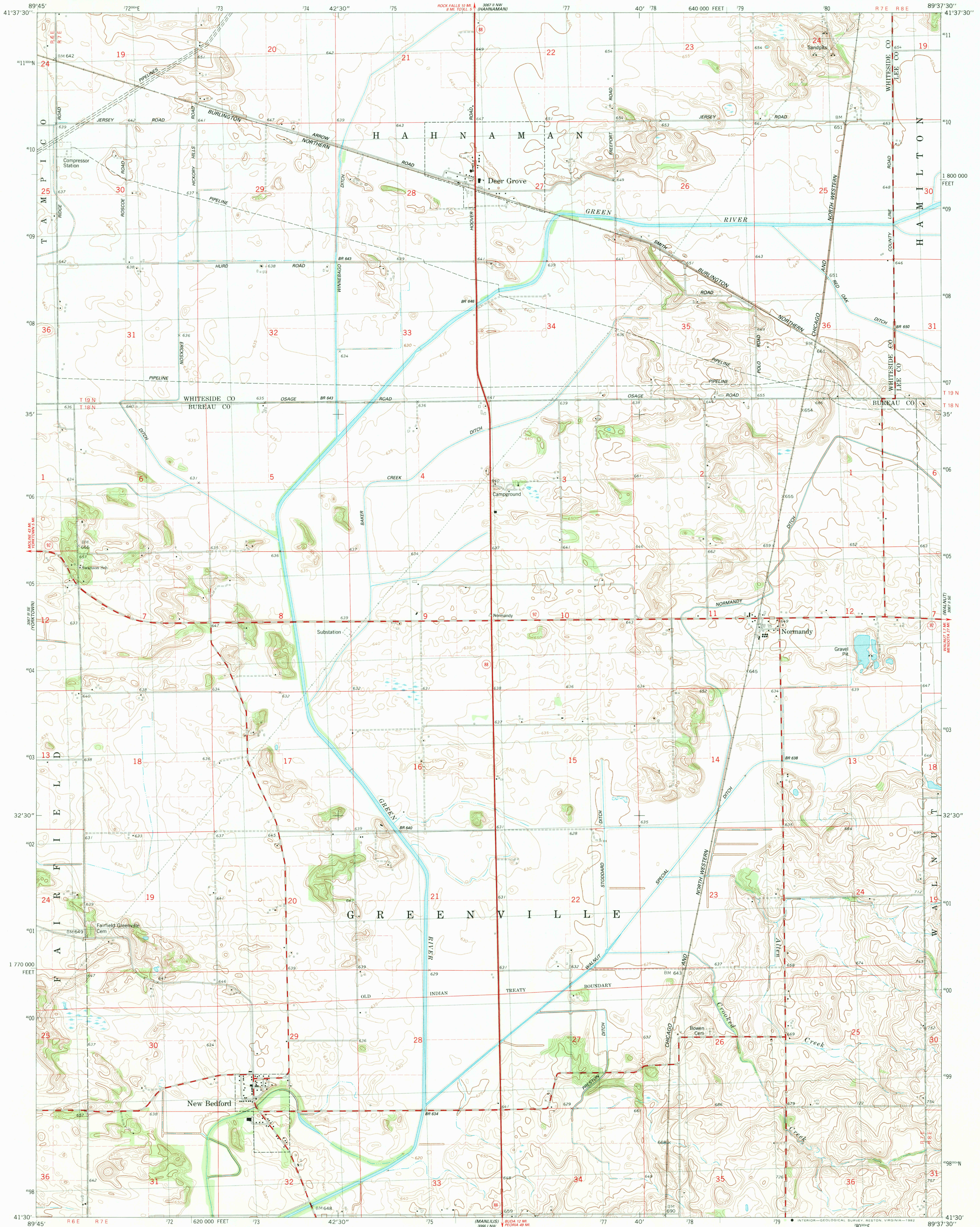


UNITED STATES
DEPARTMENT OF THE INTERIOR
GEOLOGICAL SURVEY

NEW BEDFORD QUADRANGLE
ILLINOIS
7.5 MINUTE SERIES (TOPOGRAPHIC)
SW 1/4 WALNUT 15' QUADRANGLE



Mapped, edited, and published by the Geological Survey

Control by USGS and NOS/NOAA

Topography by photogrammetric methods from aerial photographs

taken 1979-80. Field checked 1981. Map edited 1982

Projection and 10,000-foot grid ticks: Illinois coordinate

system, west zone (transverse Mercator)

1000-meter Universal Transverse Mercator grid, zone 16

1927 North American Datum

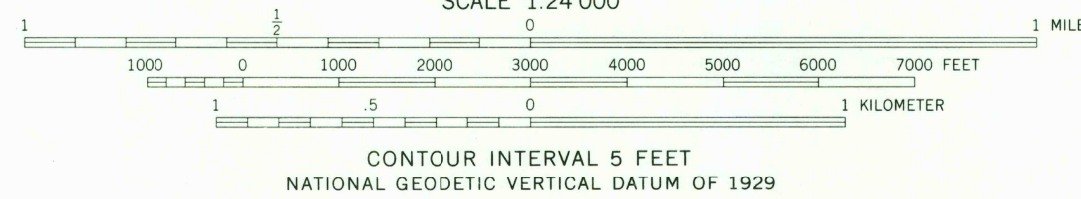
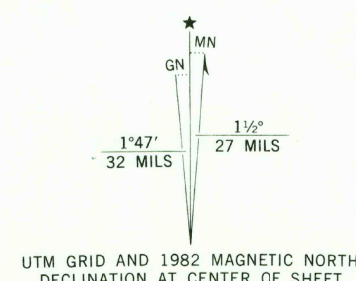
To place on the predicted North American Datum 1983

move the projection lines 2 meters north and

9 meters east as shown by dashed corner ticks

Fine red dashed lines indicate selected fence and field lines where

generally visible on aerial photographs. This information is unchecked



ROAD CLASSIFICATION	
Primary highway, hard surface	Light-duty road, hard or improved surface
Secondary highway, hard surface	Unimproved road
Interstate Route	U. S. Route
	State Route

NEW BEDFORD, ILL.
SW 1/4 WALNUT 15' QUADRANGLE
N4130-W8937.5/7.5

1982

DMA 3067 II SW-SERIES Y683

THIS MAP COMPLIES WITH NATIONAL MAP ACCURACY STANDARDS
FOR SALE BY U. S. GEOLOGICAL SURVEY, RESTON, VIRGINIA 22092
AND BY THE STATE GEOLOGICAL SURVEY, CHAMPAIGN, ILLINOIS 61820
A FOLDER DESCRIBING TOPOGRAPHIC MAPS AND SYMBOLS IS AVAILABLE ON REQUEST

MAY 16 1983

2550