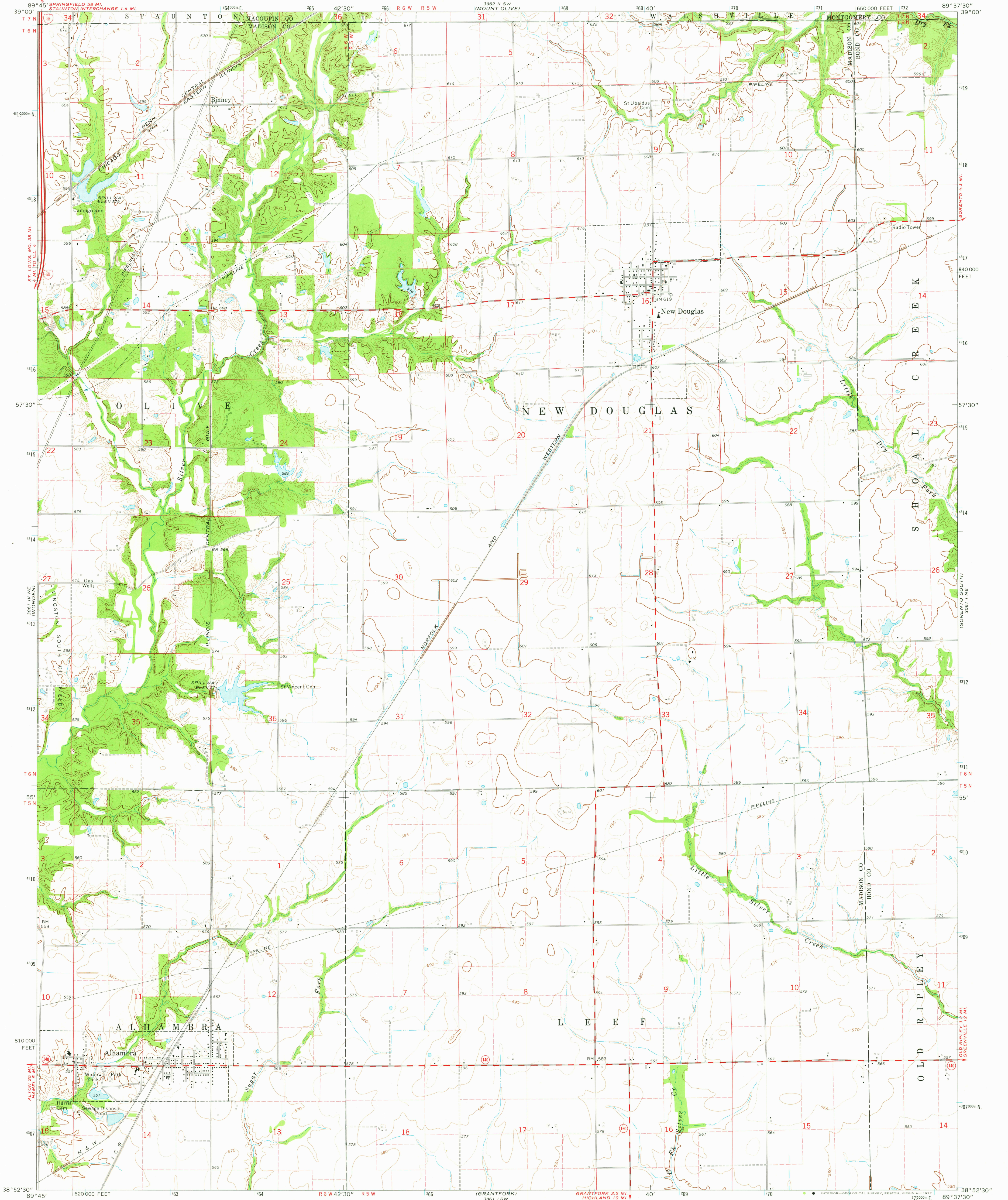


UNITED STATES
DEPARTMENT OF THE INTERIOR
GEOLOGICAL SURVEY

NEW DOUGLAS QUADRANGLE
ILLINOIS
7.5 MINUTE SERIES (TOPOGRAPHIC)



Mapped, edited, and published by the Geological Survey

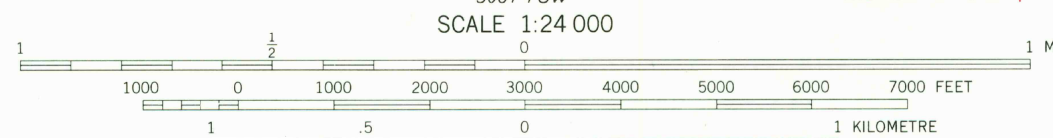
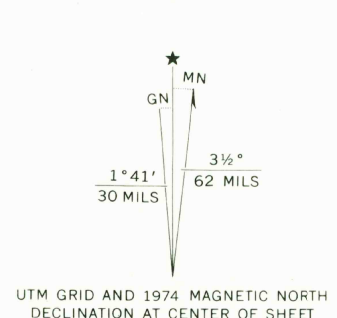
Control by USGS and NOS/NOAA

Topography by photogrammetric methods from aerial photographs taken 1973. Field checked 1974

Projection and 10,000-foot grid ticks: Illinois coordinate system, west zone (transverse Mercator)

1000-metre Universal Transverse Mercator grid ticks, zone 16, shown in blue. 1927 North American datum

Fine red dashed lines indicate selected fence and field lines where generally visible on aerial photographs. This information is unchecked



THIS MAP COMPLIES WITH NATIONAL MAP ACCURACY STANDARDS
FOR SALE BY U. S. GEOLOGICAL SURVEY, RESTON, VIRGINIA 22092
AND BY THE STATE GEOLOGICAL SURVEY, URBANA, ILLINOIS 61801
A FOLDER DESCRIBING TOPOGRAPHIC MAPS AND SYMBOLS IS AVAILABLE ON REQUEST



ROAD CLASSIFICATION	
Primary highway, hard surface	Light-duty road, hard or improved surface
Secondary highway, hard surface	Unimproved road
Interstate Route	U. S. Route
	State Route

USGS
Historical File
Topographic Division

NEW DOUGLAS, ILL.
NW/4 NEW DOUGLAS 15' QUADRANGLE
N 3852.5-W 8937.5/7.5

1974

AMS 5061 I NW-SERIES V863

3400
MAY 23 1977