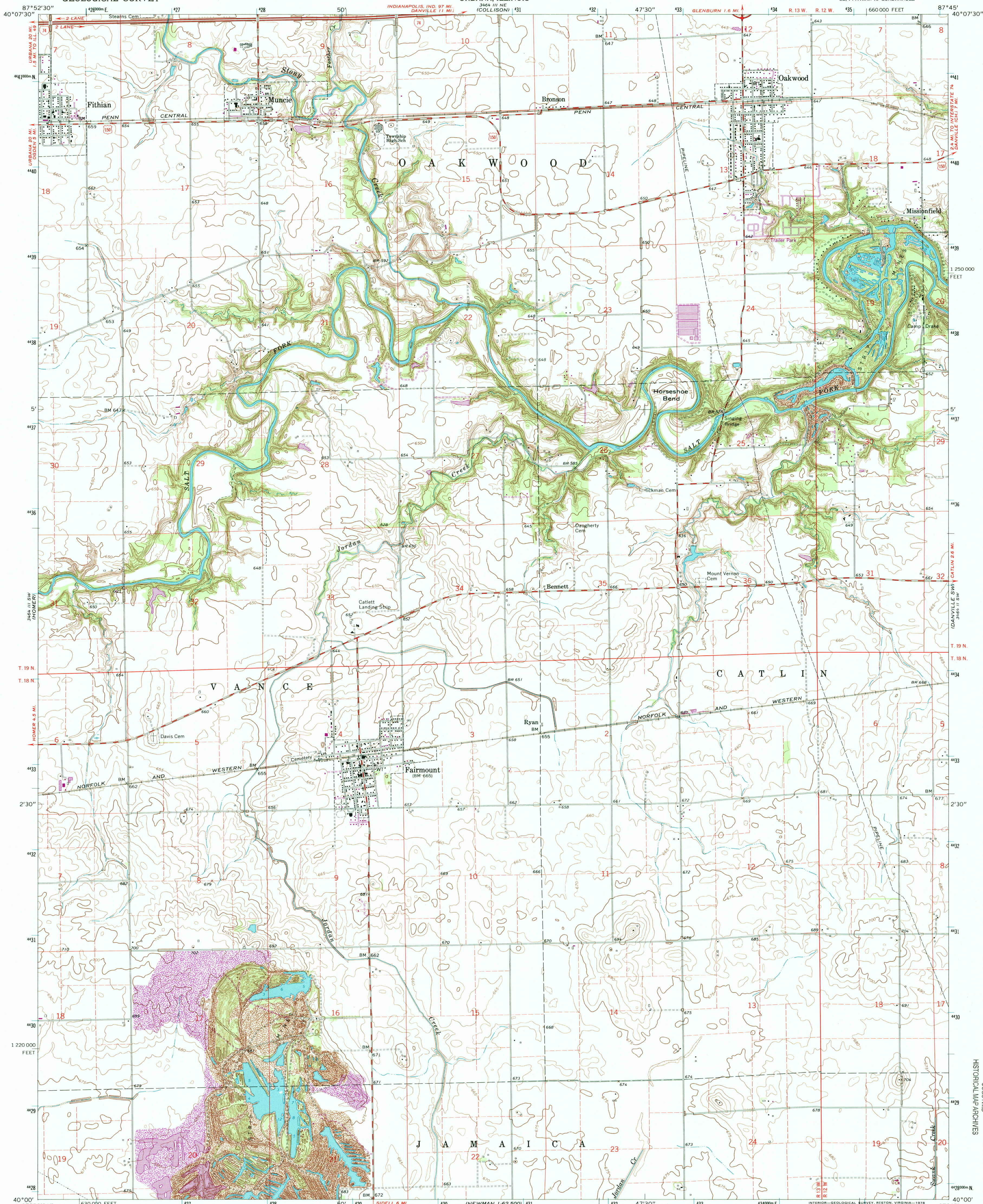


UNITED STATES
DEPARTMENT OF THE INTERIOR
GEOLOGICAL SURVEY

STATE OF ILLINOIS
DEPARTMENT OF REGISTRATION AND EDUCATION
GEOLOGICAL SURVEY DIVISION
URBANA, ILLINOIS

OAKWOOD QUADRANGLE
ILLINOIS - VERMILION CO.
7.5 MINUTE SERIES (TOPOGRAPHIC)
SE 1/4 FIFTH 15' QUADRANGLE



Mapped, edited, and published by the Geological Survey

Control by USGS and USC&GS

Topography by photogrammetric methods from aerial photographs taken 1966. Field checked 1968

Soundings compiled from charts furnished by Illinois Department of Conservation

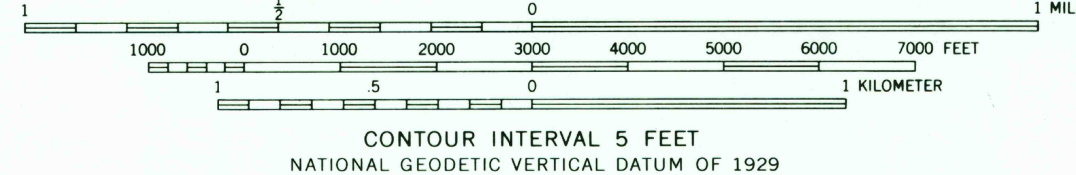
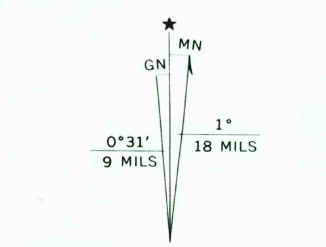
Polyconic projection. 1927 North American datum

10,000-foot grid based on Illinois coordinate system, east zone

1000-meter Universal Transverse Mercator grid ticks, zone 16, shown in blue

Fine red dashed lines indicate selected fence and field lines where generally visible on aerial photographs. This information is unchecked

Revisions shown in purple compiled from aerial photographs taken 1977. Map edited 1978. This information not field checked



ROAD CLASSIFICATION	
Heavy-duty	Light-duty
Medium-duty	Unimproved dirt
Interstate Route	U. S. Route

OAKWOOD, ILL.
SE 1/4 FIFTH 15' QUADRANGLE
N4000-W8745/7.5
1968
PHOTOREVISED 1978
AMS 3464 III SE-SERIES V863

RECEIVED
JUL 31 1999
USGS NMD
HISTORICAL MAP ARCHIVES

