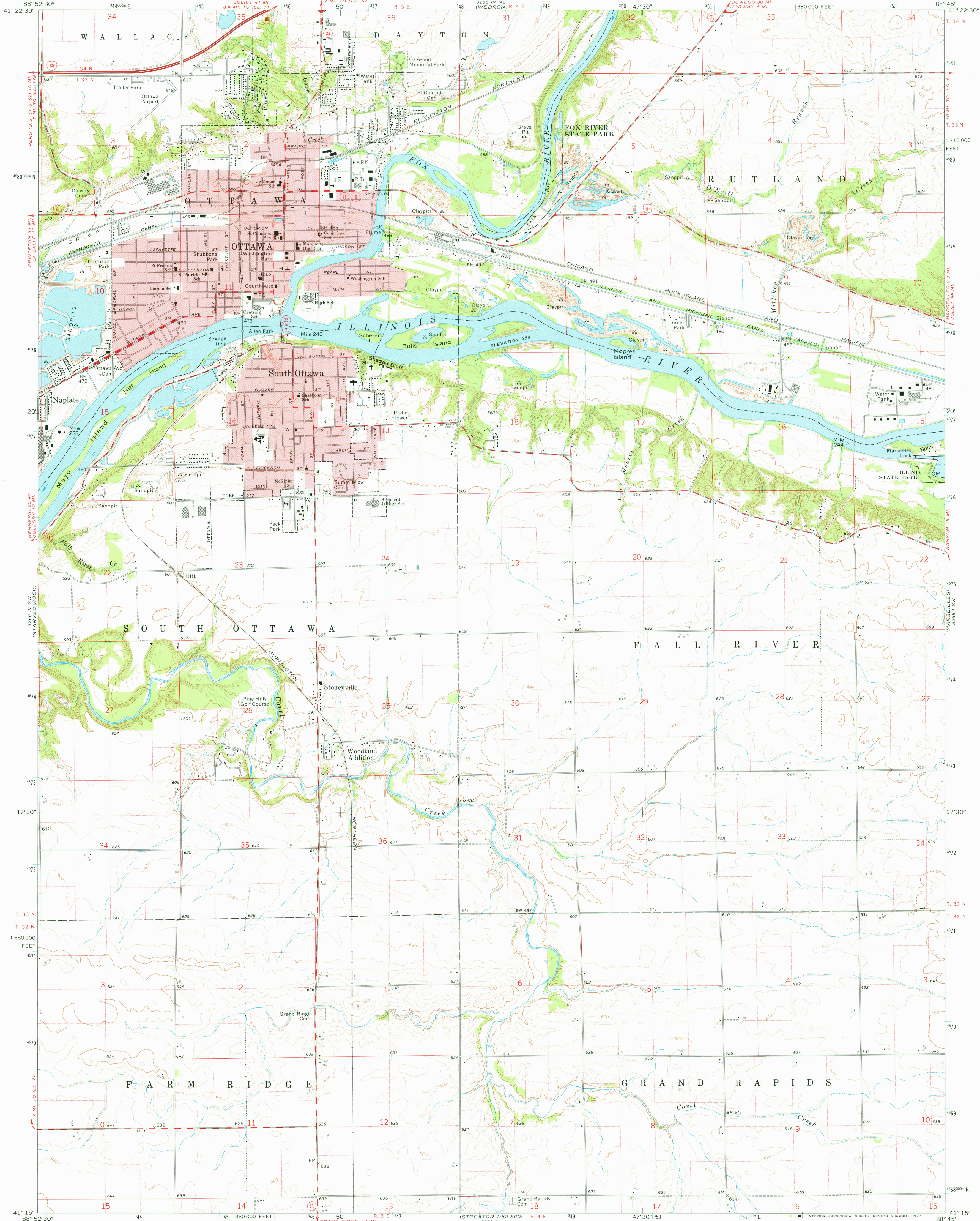


UNITED STATES
DEPARTMENT OF THE INTERIOR
GEOLOGICAL SURVEY

OTTAWA QUADRANGLE
ILLINOIS-LA SALLE CO.
7.5 MINUTE SERIES (TOPOGRAPHIC)
SE 1/4 OTTAWA 15' QUADRANGLE



Mapped, edited, and published by the Geological Survey

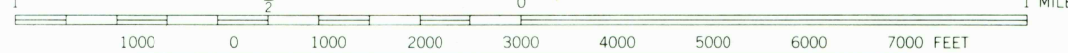
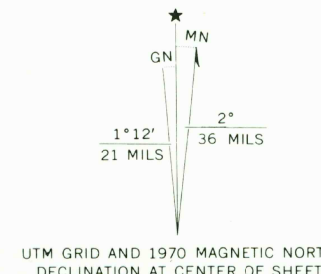
Control by USGS and USC&GS

Topography by photogrammetric methods from aerial photographs taken 1967. Field checked 1970

Polyconic projection. 1927 North American datum 10,000-foot grid based on Illinois coordinate system, east zone 1000-meter Universal Transverse Mercator grid ticks, zone 16, shown in blue

Red tint indicates areas in which only landmark buildings are shown

Fine red dashed lines indicate selected fence and field lines where generally visible on aerial photographs. This information is unchecked



CONTOUR INTERVAL 10 FEET
NATIONAL GEODETIC VERTICAL DATUM OF 1929

THIS MAP COMPLIES WITH NATIONAL MAP ACCURACY STANDARDS
FOR SALE BY U. S. GEOLOGICAL SURVEY, RESTON, VIRGINIA 22092
AND BY THE STATE GEOLOGICAL SURVEY, URBANA, ILLINOIS 61801
A FOLDER DESCRIBING TOPOGRAPHIC MAPS AND SYMBOLS IS AVAILABLE ON REQUEST



QUADRANGLE LOCATION

ROAD CLASSIFICATION	
Primary highway, all weather, hard surface	Light-duty road, all weather, improved surface
Secondary highway, all weather, hard surface	Unimproved road, fair or dry weather
Interstate Route	U. S. Route
	State Route

OTTAWA, ILL.
SE 1/4 OTTAWA 15' QUADRANGLE
N4115-W8845/7.5

1970
AMS 3266 IV SE-SERIES V863

AUG 23 1977