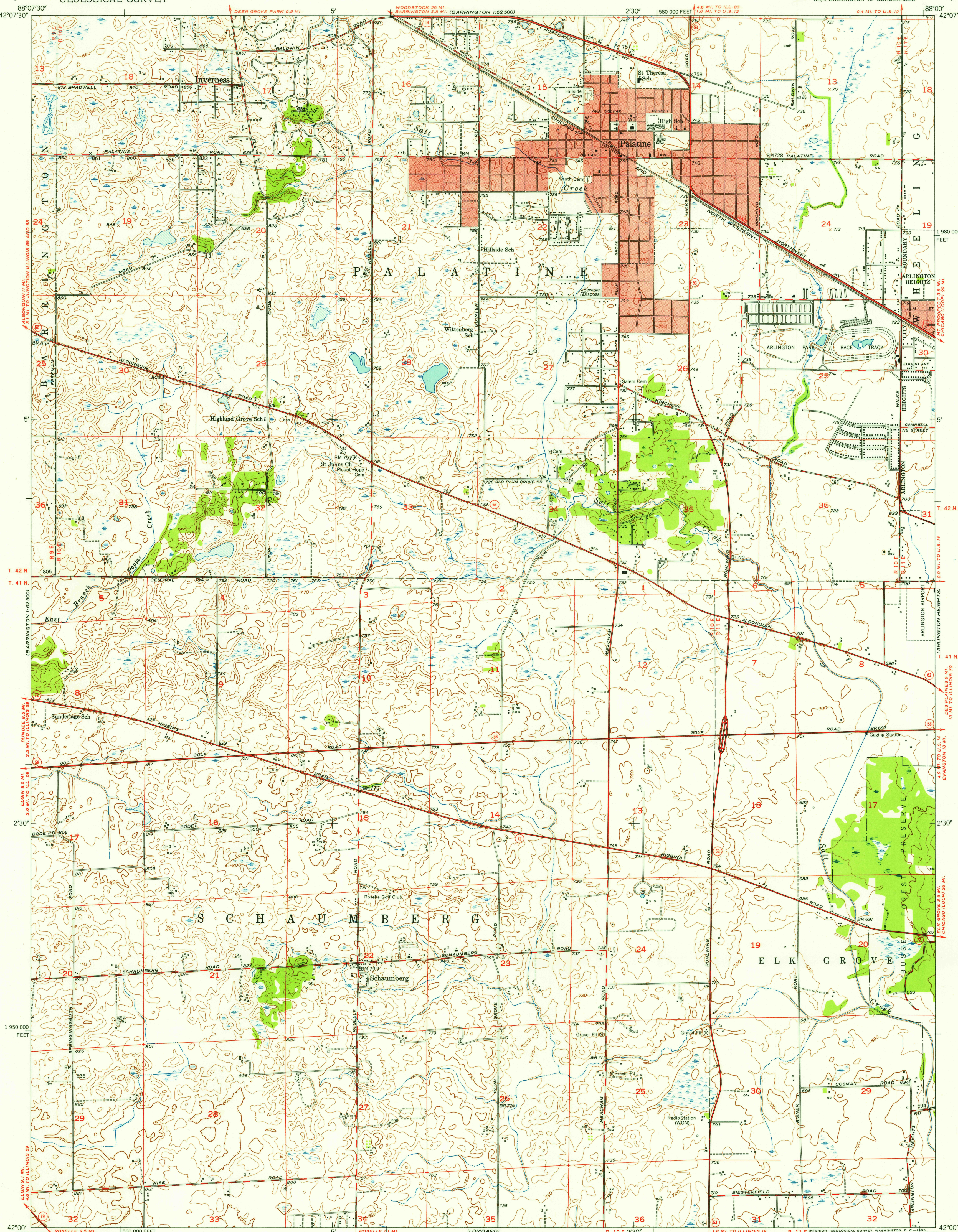


UNITED STATES
DEPARTMENT OF THE INTERIOR
GEOLOGICAL SURVEY

PALATINE QUADRANGLE
ILLINOIS—COOK CO.
7.5 MINUTE SERIES (TOPOGRAPHIC)
SE/4 BARRINGTON 15' QUADRANGLE

U.S.G.S.
FILE COPY
TOPOGRAPHIC DIVISION



Mapped, edited, and published by the Geological Survey
Control by USGS, USC&GS, and Cook County Highway Department
Topography from aerial photographs by Kelsh plotter
and by plane-table surveys 1953. Aerial photographs taken 1952
Polyconic projection. 1927 North American datum
10,000-foot grid based on Illinois coordinate system,
east zone
Red tint indicates areas in which only
landmark buildings are shown

APPROXIMATE MEAN
DECLINATION, 1953

THIS MAP COMPLIES WITH NATIONAL MAP ACCURACY STANDARDS
FOR SALE BY U. S. GEOLOGICAL SURVEY, WASHINGTON 25, D. C.
AND BY THE STATE GEOLOGICAL SURVEY, URBANA, ILLINOIS
A FOLDER DESCRIBING TOPOGRAPHIC MAPS AND SYMBOLS IS AVAILABLE ON REQUEST

USGS
Historical File
Topographic Division

ROAD CLASSIFICATION
Heavy-duty — 4 LANE 6 LANE Light-duty —
Medium-duty — 4 LANE 6 LANE Unimproved dirt —
U. S. Route State Route

PALATINE, ILL.
SE/4 BARRINGTON 15' QUADRANGLE
N4200-W8800/7.5

1953

U.S.G.S.
FILE COPY
TOPOGRAPHIC DIVISION

MAY 20 1955