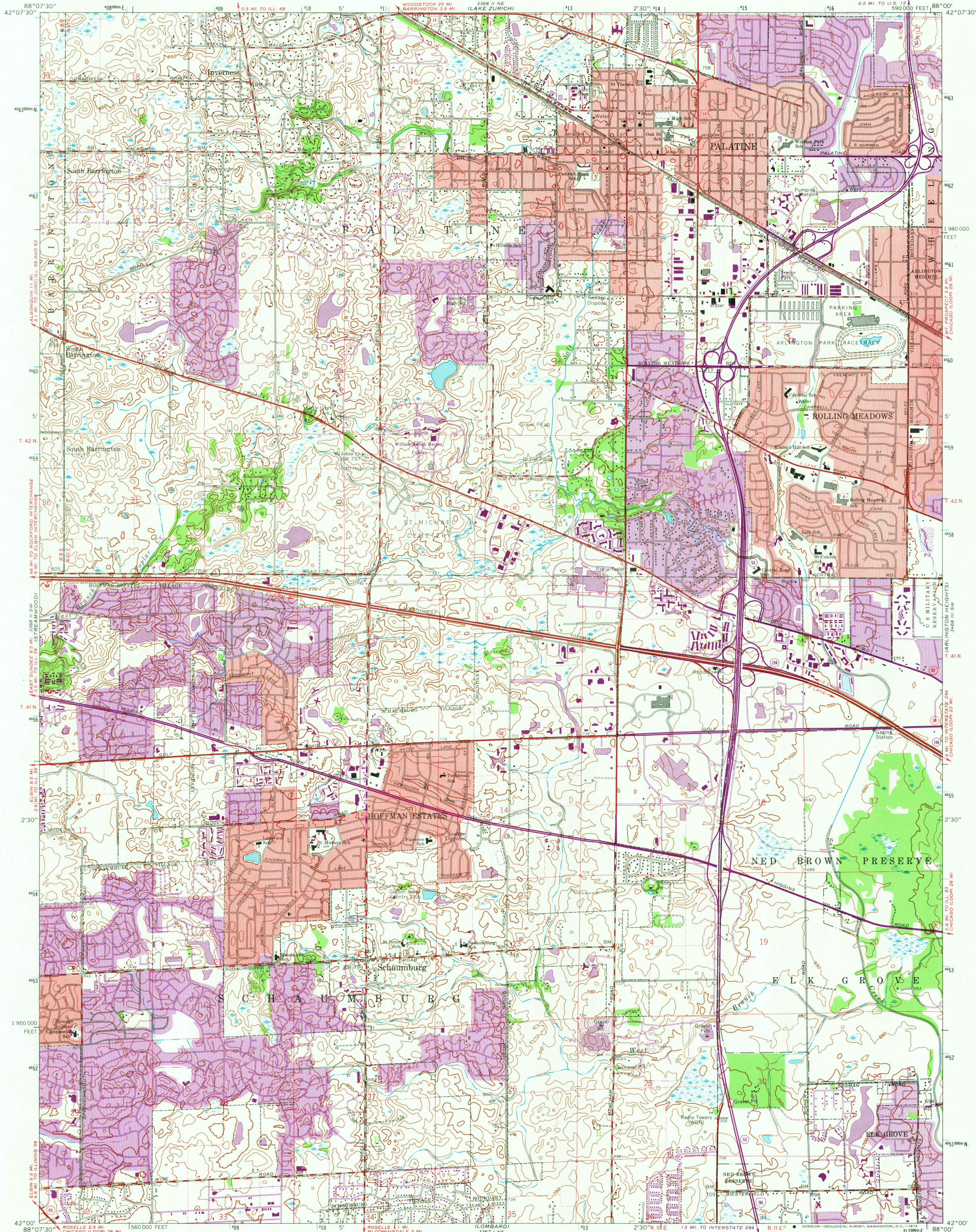
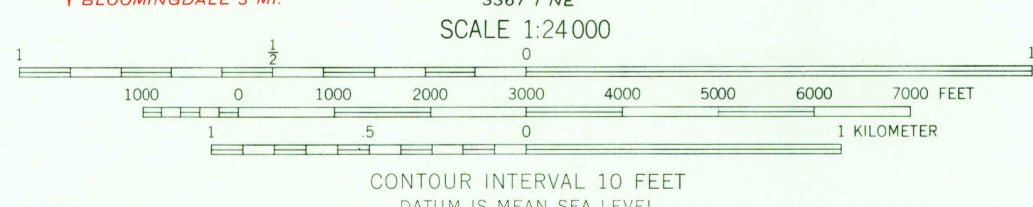
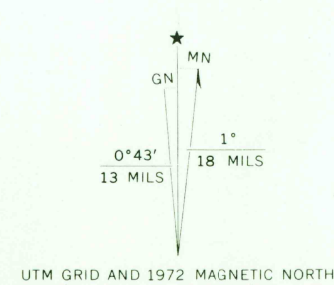


UNITED STATES  
DEPARTMENT OF THE INTERIOR  
GEOLOGICAL SURVEY

PALATINE QUADRANGLE  
ILLINOIS—COOK CO.  
7.5 MINUTE SERIES (TOPOGRAPHIC)  
SE/4 BARRINGTON 15 QUADRANGLE  
0.2 MI. TO U.S. 12  
590 000 FEET



Mapped, edited, and published by the Geological Survey  
Control by USGS, USC&GS, and Cook County Highway Department  
Topography by photogrammetric methods from aerial photographs  
taken 1952 and planimetric surveys 1953. Revised from aerial  
photographs taken 1960. Field checked 1961  
Polyconic projection. 1927 North American datum  
10,000-foot grid based on Illinois coordinate system, east zone  
1000-meter Universal Transverse Mercator grid ticks,  
zone 16, shown in blue  
Red tint indicates areas in which only landmark buildings are shown  
Fine red dashed lines indicate selected fence and field lines where  
generally visible on aerial photographs. This information is unchecked  
Revisions shown in purple compiled from aerial photographs  
taken 1972. This information not field checked  
Purple tint indicates extension of urban areas



THIS MAP COMPLIES WITH NATIONAL MAP ACCURACY STANDARDS  
FOR SALE BY U.S. GEOLOGICAL SURVEY, WASHINGTON, D.C. 20242  
AND BY THE STATE GEOLOGICAL SURVEY, URBANA, ILLINOIS 61801  
A FOLDER DESCRIBING TOPOGRAPHIC MAPS AND SYMBOLS IS AVAILABLE ON REQUEST



ROAD CLASSIFICATION  
Heavy-duty ——— Light-duty ———  
Medium-duty ——— Unimproved dirt ———  
Interstate Route ——— U.S. Route ——— State Route ———  
14 AUG 1973  
PALATINE, ILL.  
SE/4 BARRINGTON 15 QUADRANGLE  
N4200—W8800/7.5  
1961  
PHOTOREVISED 1972  
AMS 3368 II SE—SERIES V863

3565