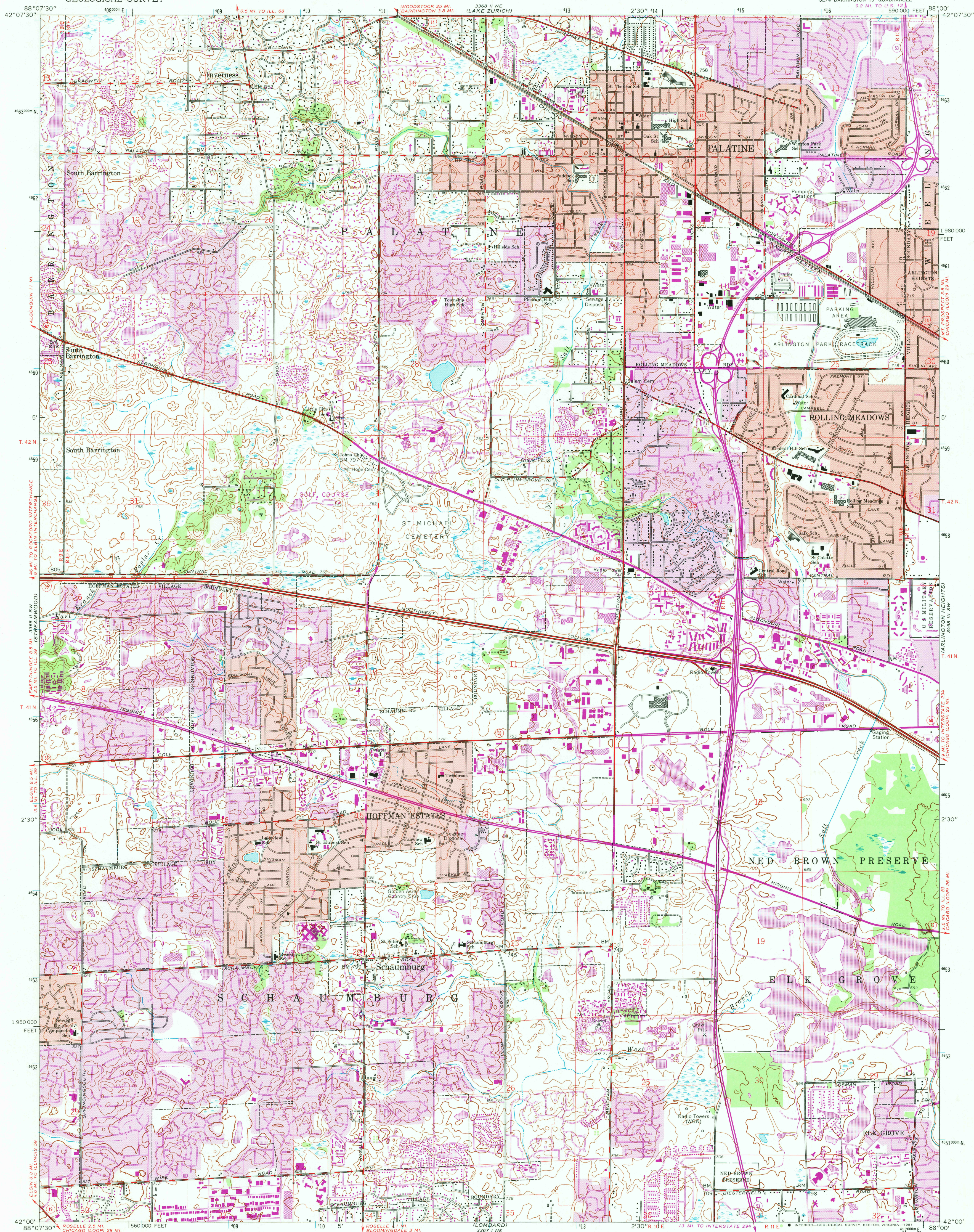
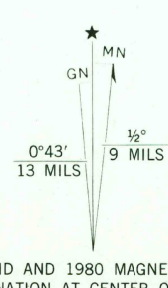


UNITED STATES  
DEPARTMENT OF THE INTERIOR  
GEOLOGICAL SURVEY

PALATINE QUADRANGLE  
ILLINOIS—COOK CO.  
7.5 MINUTE SERIES (TOPOGRAPHIC)  
SE/4 BARRINGTON 15' QUADRANGLE  
0.2 MI. TO U.S. 12  
590 000 FEET 88°00'



Mapped, edited, and published by the Geological Survey  
Control by USGS, USC&GS, and Cook County Highway Department  
Topography by photogrammetric methods from aerial photographs  
taken 1952 and planimetric surveys 1953. Revised from aerial  
photographs taken 1960. Field checked 1961  
Polyconic projection. 1927 North American datum  
10,000-foot grid based on Illinois coordinate system, east zone  
1000-meter Universal Transverse Mercator grid ticks,  
zone 16, shown in blue  
Red tint indicates areas in which only landmark buildings are shown  
To place on the predicted North American Datum 1983  
move the projection lines 2 meters north and  
6 meters east as shown by dashed corner ticks  
There may be private inholdings within the boundaries of  
the National or State reservations shown on this map



THIS MAP COMPLIES WITH NATIONAL MAP ACCURACY STANDARDS  
FOR SALE BY U.S. GEOLOGICAL SURVEY, RESTON, VIRGINIA 22092  
AND BY THE STATE GEOLOGICAL SURVEY, URBANA, ILLINOIS 61801  
A FOLDER DESCRIBING TOPOGRAPHIC MAPS AND SYMBOLS IS AVAILABLE ON REQUEST

Revisions shown in purple compiled from aerial photographs  
taken 1972 and 1978. Map edited 1980  
This information not field checked  
Purple tint indicates extension of urban area

ROAD CLASSIFICATION  
Heavy-duty ——— Light-duty ———  
Medium-duty ——— Unimproved dirt ———  
Interstate Route U.S. Route State Route  
PALATINE, ILL.  
SE/4 BARRINGTON 15' QUADRANGLE  
N4200—W8800/7.5  
1961  
PHOTOREVISED 1972 AND 1980  
DMA 3368 II SE—SERIES V863

USGS  
Historical File  
National Mapping

2050  
MAY 5 1981