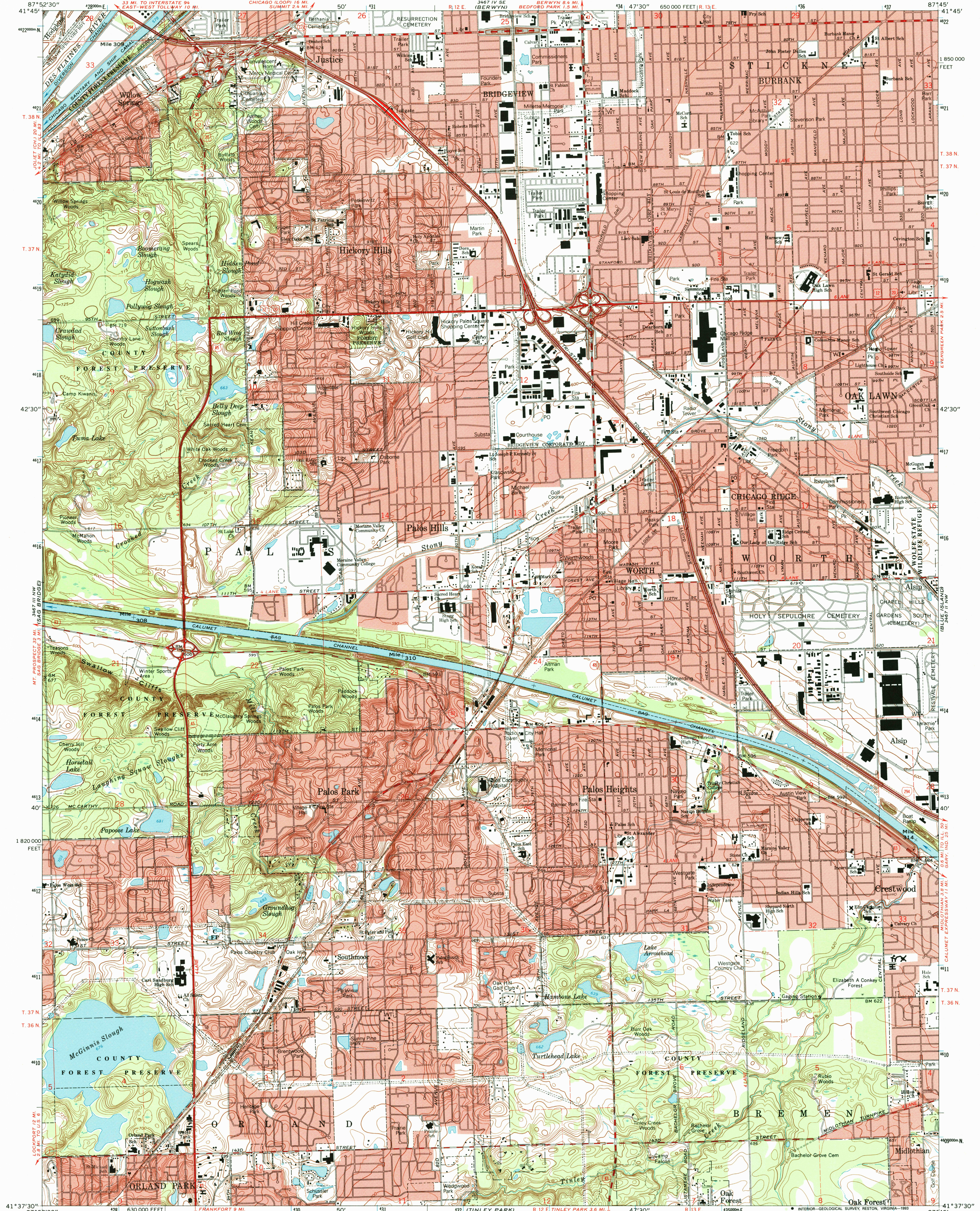


UNITED STATES  
DEPARTMENT OF THE INTERIOR  
GEOLOGICAL SURVEY

PALOS PARK QUADRANGLE  
ILLINOIS-COOK CO.  
7.5 MINUTE SERIES (TOPOGRAPHIC)



Produced by the United States Geological Survey in cooperation with State of Illinois Geological Survey Control by USGS, NOS/NOAA, U.S. Lake Survey, and Cook County Highway Department

Planimetry by photogrammetric methods from aerial photographs taken 1962-63. Topography by planetable surveys 1925 Revised from aerial photographs taken 1988. Field checked 1991 Map edited 1993

Projection and 10,000-foot grid ticks: Illinois coordinate system, east zone (transverse Mercator)

1000-meter Universal Transverse Mercator grid ticks, zone 16, shown in blue 1927 North American Datum (NAD 27)

North American Datum of 1983 (NAD 83) is shown by dashed corner ticks The values of the shift between NAD 27 and NAD 83 for 7.5-minute intersections are given in USGS Bulletin 1875

There may be private inholdings within the boundaries of the National or State reservations shown on this map

Red tint indicates areas in which only landmark buildings are shown

Fine red dashed lines indicate selected fence and field lines where generally visible on aerial photographs. This information is unchecked

SCALE 1:24,000

CONTOUR INTERVAL 5 FEET  
NATIONAL GEODETIC VERTICAL DATUM OF 1929

UTM GRID AND 1993 MAGNETIC NORTH DECLINATION AT CENTER OF SHEET

1" = 27 MILES  
0.32" = 9 MILES

THIS MAP COMPLIES WITH NATIONAL MAP ACCURACY STANDARDS FOR SALE BY U.S. GEOLOGICAL SURVEY, DENVER, COLORADO 80225, OR RESTON, VIRGINIA 22092 AND ILLINOIS GEOLOGICAL SURVEY, CHAMPAIGN, ILLINOIS 61820

A FOLDER DESCRIBING TOPOGRAPHIC MAPS AND SYMBOLS IS AVAILABLE ON REQUEST

ROAD CLASSIFICATION

Primary highway, hard surface	Light-duty road, hard or improved surface
Secondary highway, hard surface	Unimproved road
Interstate Route	U.S. Route
	State Route

QUADRANGLE LOCATION

ILLINOIS

USGS 150 HISTORICAL MAP ARCHIVES  
MAY 10 1994  
REC'D FILE COPY

PALOS PARK, ILL.  
41087-F7-TF-024  
1993  
DMA 3467 III NE-SERIES V863