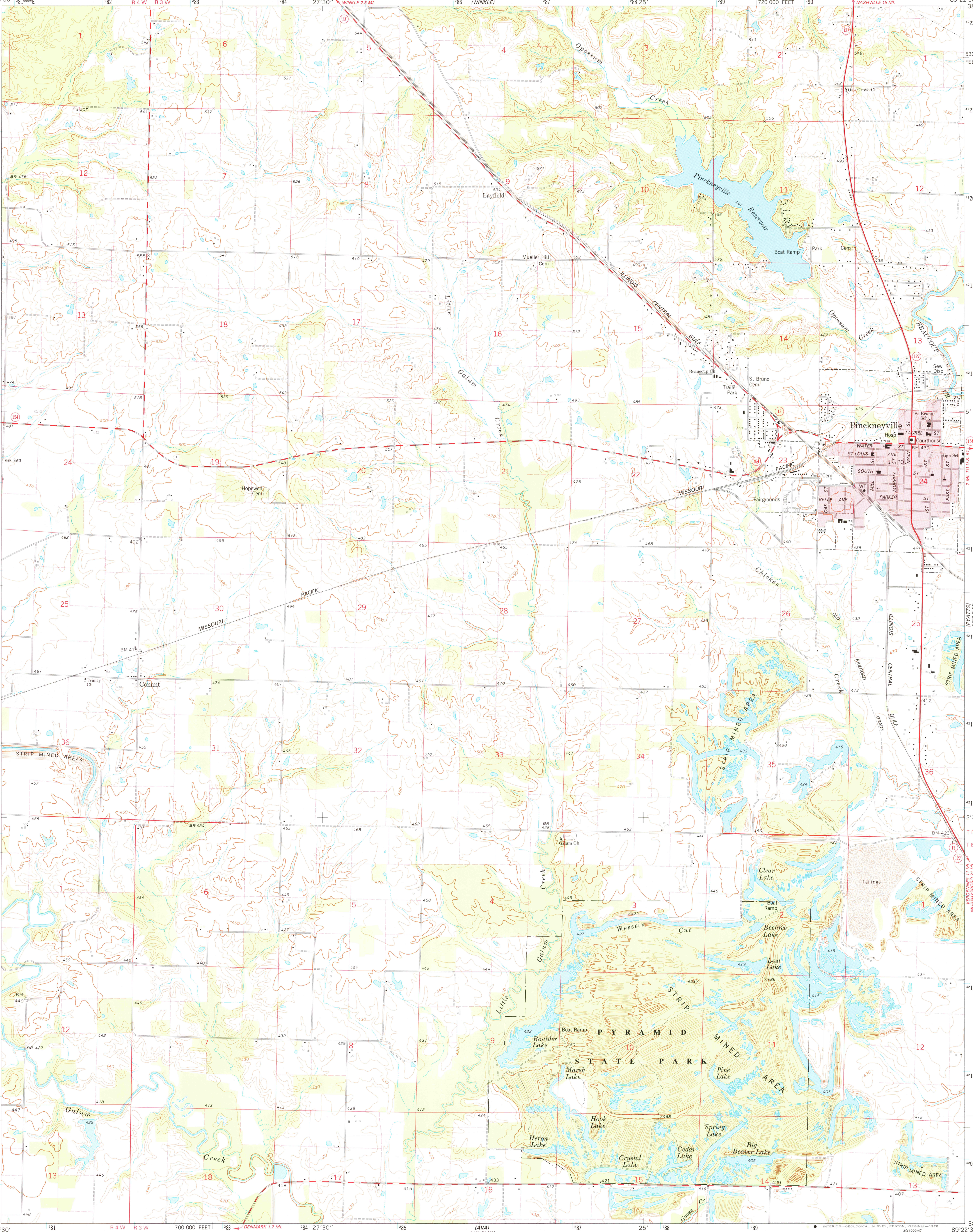
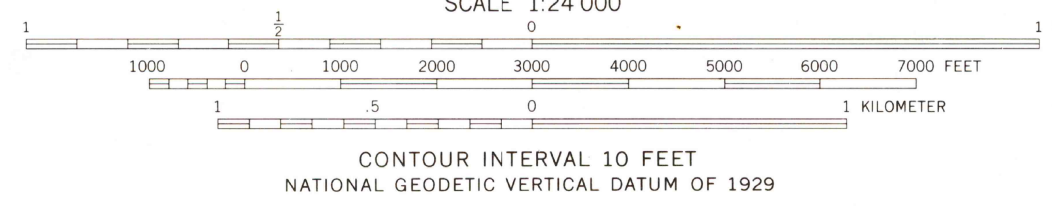
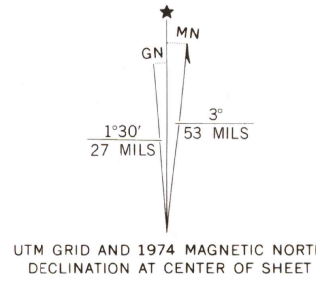


UNITED STATES
DEPARTMENT OF THE INTERIOR
GEOLOGICAL SURVEY

PINCKNEYVILLE QUADRANGLE
ILLINOIS—PERRY CO.
7.5 MINUTE SERIES (TOPOGRAPHIC)
SW/4 PINCKNEYVILLE 15' QUADRANGLE



Mapped, edited, and published by the Geological Survey
Control by USGS and NOS/NOAA
Topography by photogrammetric methods from aerial
photographs taken 1973. Field checked 1974
Projection and 10,000-foot grid ticks: Illinois coordinate
system, west zone (transverse Mercator)
1000-meter Universal Transverse Mercator grid ticks,
zone 16, shown in blue. 1927 North American datum
Red tint indicates area in which only landmark buildings are shown
Fine red dashed lines indicate selected fence and field lines where
generally visible on aerial photographs. This information is unchecked



THIS MAP COMPLIES WITH NATIONAL MAP ACCURACY STANDARDS
FOR SALE BY U.S. GEOLOGICAL SURVEY, RESTON, VIRGINIA 22092
AND BY THE STATE GEOLOGICAL SURVEY, URBANA, ILLINOIS 61801
A FOLDER DESCRIBING TOPOGRAPHIC MAPS AND SYMBOLS IS AVAILABLE ON REQUEST

ROAD CLASSIFICATION	
Primary highway, hard surface	Light-duty road, hard or improved surface
Secondary highway, hard surface	Unimproved road
Interstate Route	U.S. Route
	State Route



PINCKNEYVILLE, ILL.
SW/4 PINCKNEYVILLE 15' QUADRANGLE
N3800—W8922.5/7.5
1974

AMS 3160 III SW—SERIES V863

AUG 03 1978

USGS
Historical File
Topographic Division