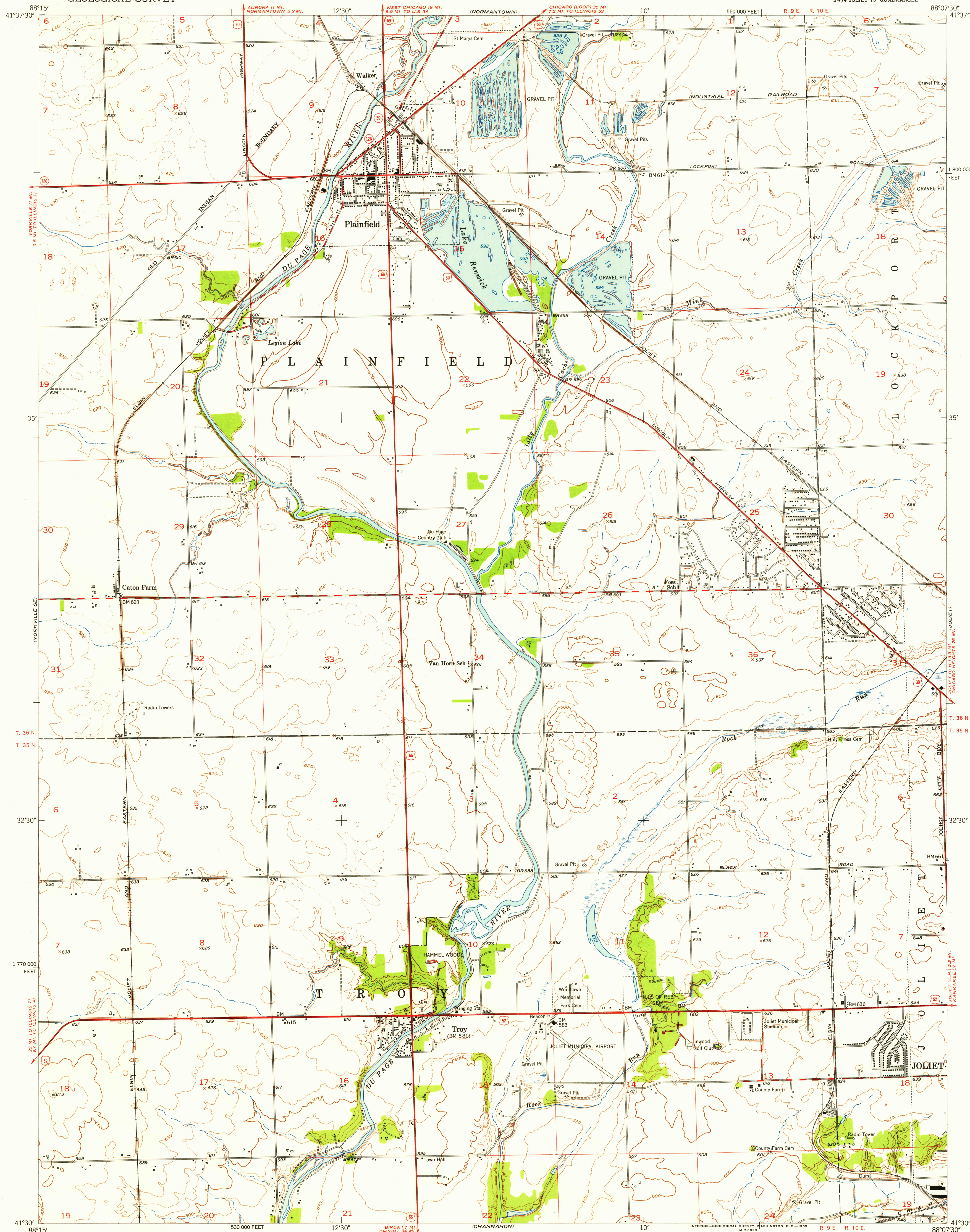


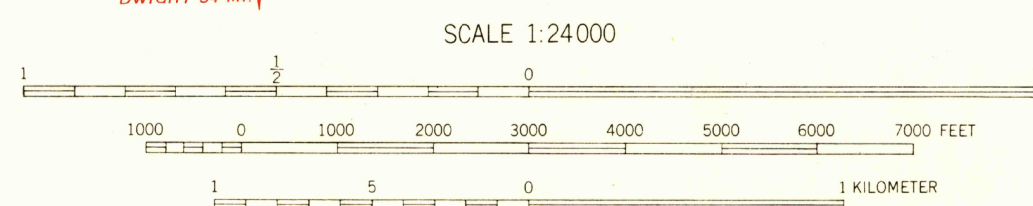
UNITED STATES
DEPARTMENT OF THE INTERIOR
GEOLOGICAL SURVEY

PLAINFIELD QUADRANGLE
ILLINOIS—WILL. CO.
7.5 MINUTE SERIES (TOPOGRAPHIC)
SW/4 JOLIET 15' QUADRANGLE

U.S.G.S.
FILE COPY
TOPOGRAPHIC DIVISION



Mapped, edited, and published by the Geological Survey
Control by USGS and USC&GS
Culture and drainage in part compiled from aerial photographs
taken 1952. Topography by plane-table surveys 1954
Polyconic projection. 1927 North American datum
10,000-foot grid based on Illinois coordinate system,
east zone



CONTOUR INTERVAL 10 FEET
DOTTED LINES REPRESENT HALF-INTERVAL CONTOURS
DATUM IS MEAN SEA LEVEL

THIS MAP COMPLIES WITH NATIONAL MAP ACCURACY STANDARDS
FOR SALE BY U. S. GEOLOGICAL SURVEY, WASHINGTON 25, D. C.
AND BY THE STATE GEOLOGICAL SURVEY, URBANA, ILLINOIS
A FOLDER DESCRIBING TOPOGRAPHIC MAPS AND SYMBOLS IS AVAILABLE ON REQUEST

USGS
Historical File
Topographic Division



ROAD CLASSIFICATION
Heavy-duty 4 LANE 16 LANE Light-duty
Medium-duty 4 LANE 16 LANE Unimproved dirt
U. S. Route State Route

PLAINFIELD, ILL.
SW/4 JOLIET 15' QUADRANGLE
N4130-W8807.5/7.5

1954

U.S.G.S.
FILE COPY
TOPOGRAPHIC DIVISION

MAY 23 1955

2625