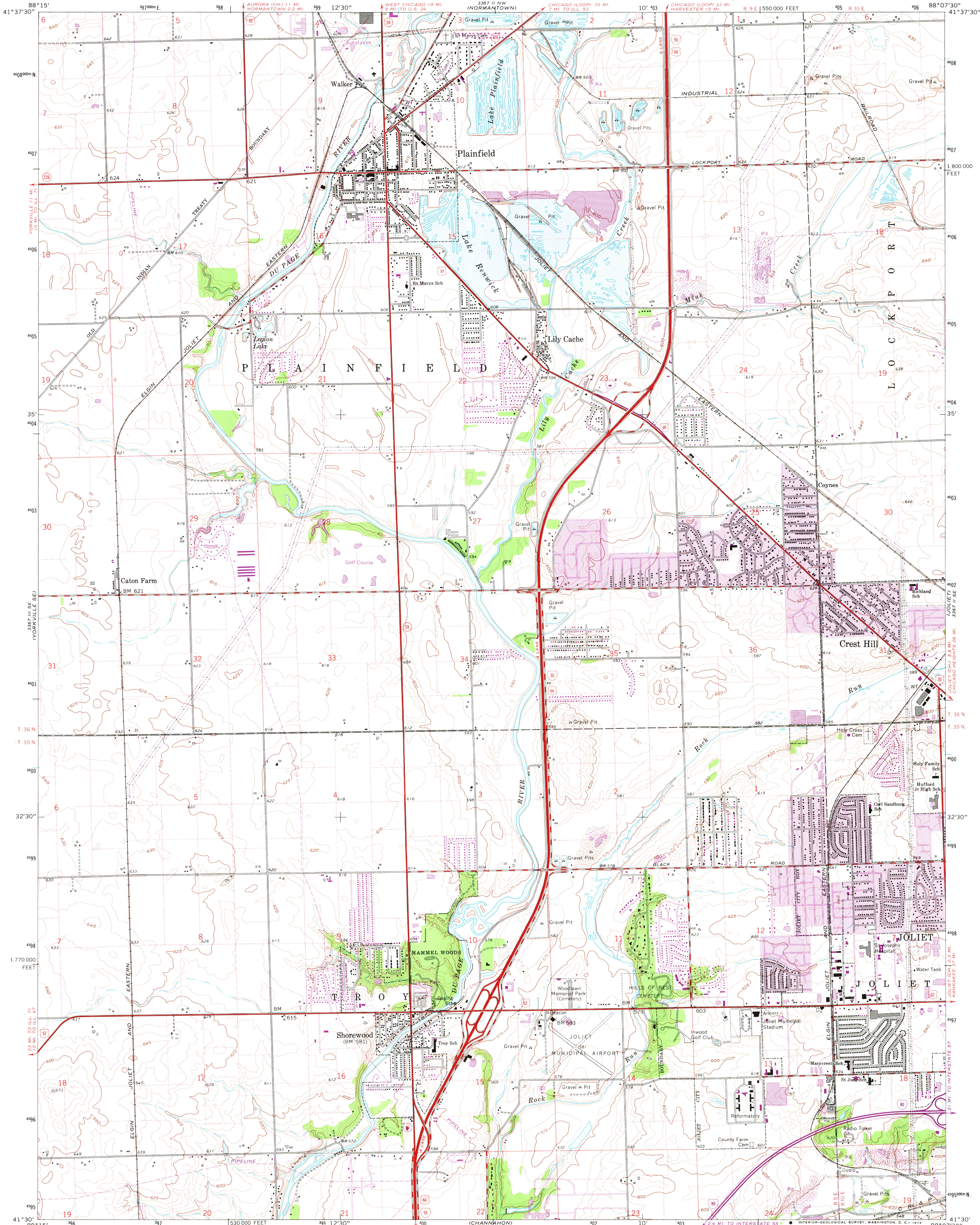


UNITED STATES  
DEPARTMENT OF THE INTERIOR  
GEOLOGICAL SURVEY

PLAINFIELD QUADRANGLE  
ILLINOIS—WILL. CO.  
7.5 MINUTE SERIES (TOPOGRAPHIC)  
SW 4 JOLIET 15' QUADRANGLE



Mapped, edited, and published by the Geological Survey  
Control by USGS and USC&GS

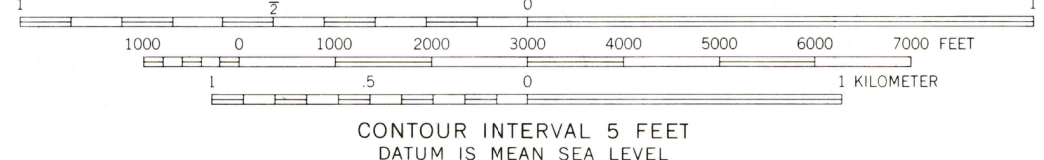
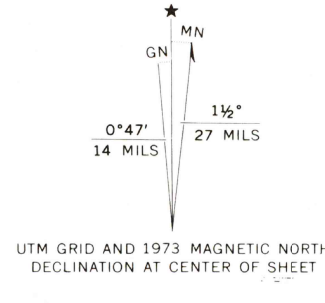
Planimetry by photogrammetric methods from aerial photographs  
taken 1952. Topography by planetable surveys 1954. Revised from  
aerial photographs taken 1962. Field checked 1962

Polyconic projection. 1927 North American datum  
10,000-foot grid based on Illinois coordinate system, east zone  
1000 meter Universal Transverse Mercator grid ticks,  
zone 16, shown in blue

Fine red dashed lines indicate selected fence and field lines where  
generally visible on aerial photographs. This information is unchecked

Revisions shown in purple compiled from aerial photographs  
taken 1973. This information not field checked

Purple tint indicates extension of urban areas



CONTOUR INTERVAL 5 FEET  
DATUM IS MEAN SEA LEVEL

THIS MAP COMPLIES WITH NATIONAL MAP ACCURACY STANDARDS  
FOR SALE BY U.S. GEOLOGICAL SURVEY, WASHINGTON, D.C. 20242  
AND BY THE STATE GEOLOGICAL SURVEY, URBANA, ILLINOIS 61801  
A FOLDER DESCRIBING TOPOGRAPHIC MAPS AND SYMBOLS IS AVAILABLE ON REQUEST

ROAD CLASSIFICATION  
Heavy-duty ——— Light-duty ———  
Medium-duty ——— Unimproved dirt ———  
Interstate Route U.S. Route State Route



QUADRANGLE LOCATION

PLAINFIELD, ILL.  
SW 4 JOLIET 15' QUADRANGLE  
N4130—W8807.5/7.5  
1962  
PHOTOREVISED 1973  
AMS 3367 II SW—SERIES V863

MAR 26 1974