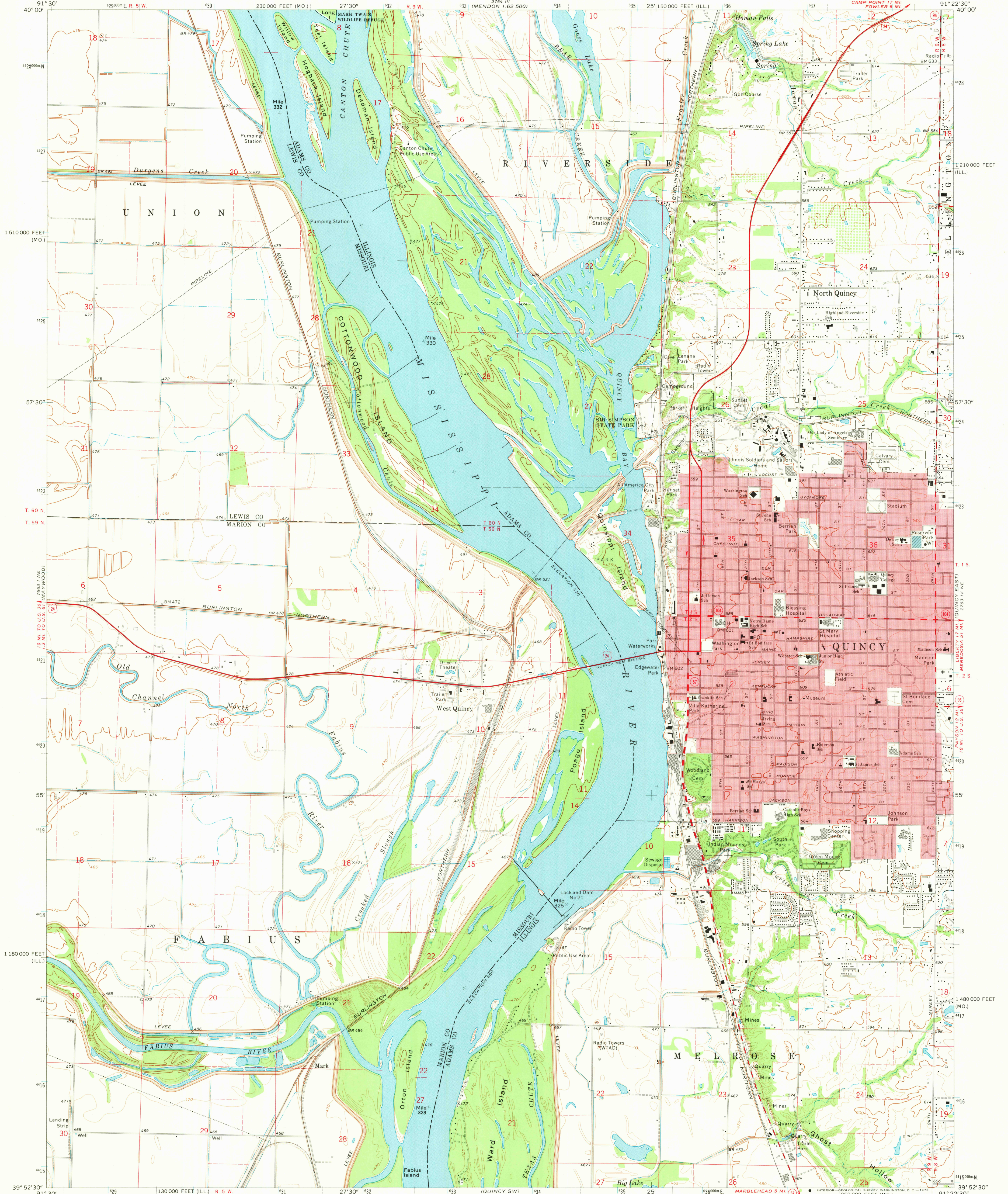
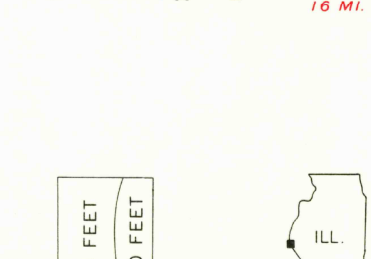
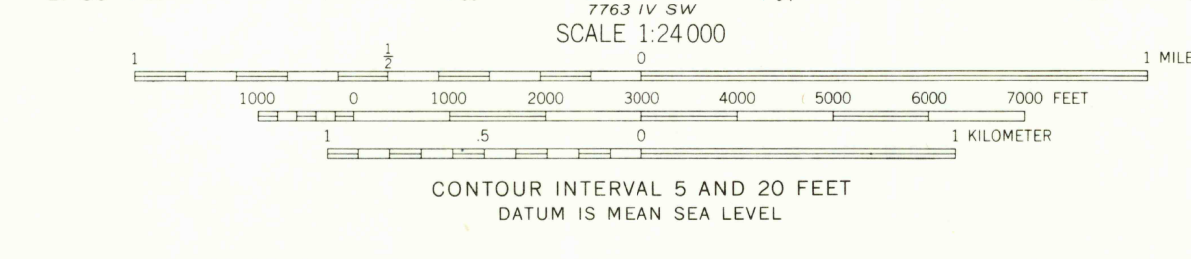
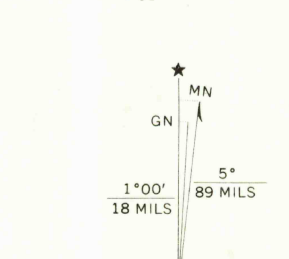


UNITED STATES
DEPARTMENT OF THE INTERIOR
GEOLOGICAL SURVEY

QUINCY WEST QUADRANGLE
ILLINOIS—MISSOURI
7.5 MINUTE SERIES (TOPOGRAPHIC)
NW 4 QUINCY 15' QUADRANGLE
CAMP POINT 17 MI. POWER L.M.



Mapped, edited, and published by the Geological Survey in cooperation with the Missouri Geological Survey and Water Resources
Control by USGS and USC&GS
Topography by photogrammetric methods from aerial photographs taken 1969-70. Field checked 1971
Polyconic projection. 1927 North American datum 10,000-foot grids based on Illinois coordinate system, west zone and Missouri coordinate system, east zone
1000-meter Universal Transverse Mercator grid ticks, zone 15, shown in blue
Red tint indicates area in which only landmark buildings are shown
Fine red dashed lines indicate selected fence and field lines where generally visible on aerial photographs. This information is unchecked



ROAD CLASSIFICATION
Primary highway, hard surface
Secondary highway, hard surface
Unimproved road
Interstate Route
U. S. Route
State Route
Light-duty road, hard or improved surface
Unimproved road
Interstate Route
U. S. Route
State Route

THIS MAP COMPLIES WITH NATIONAL MAP ACCURACY STANDARDS
FOR SALE BY U. S. GEOLOGICAL SURVEY, DENVER, COLORADO 80225, OR WASHINGTON, D. C. 20242, CONTOUR INTERVAL QUADRANGLE LOCATION
STATE GEOLOGICAL SURVEY, URBANA, ILLINOIS 61801,
AND MISSOURI GEOLOGICAL SURVEY, ROLLA, MISSOURI 65401
A FOLDER DESCRIBING TOPOGRAPHIC MAPS AND SYMBOLS IS AVAILABLE ON REQUEST

QUINCY WEST, ILL.—MO.
NW 4 QUINCY 15' QUADRANGLE
N 3952.5—W 9122.5/7.5
1971
AMS 2763 IV NW—SERIES W983
JAN 29 1973