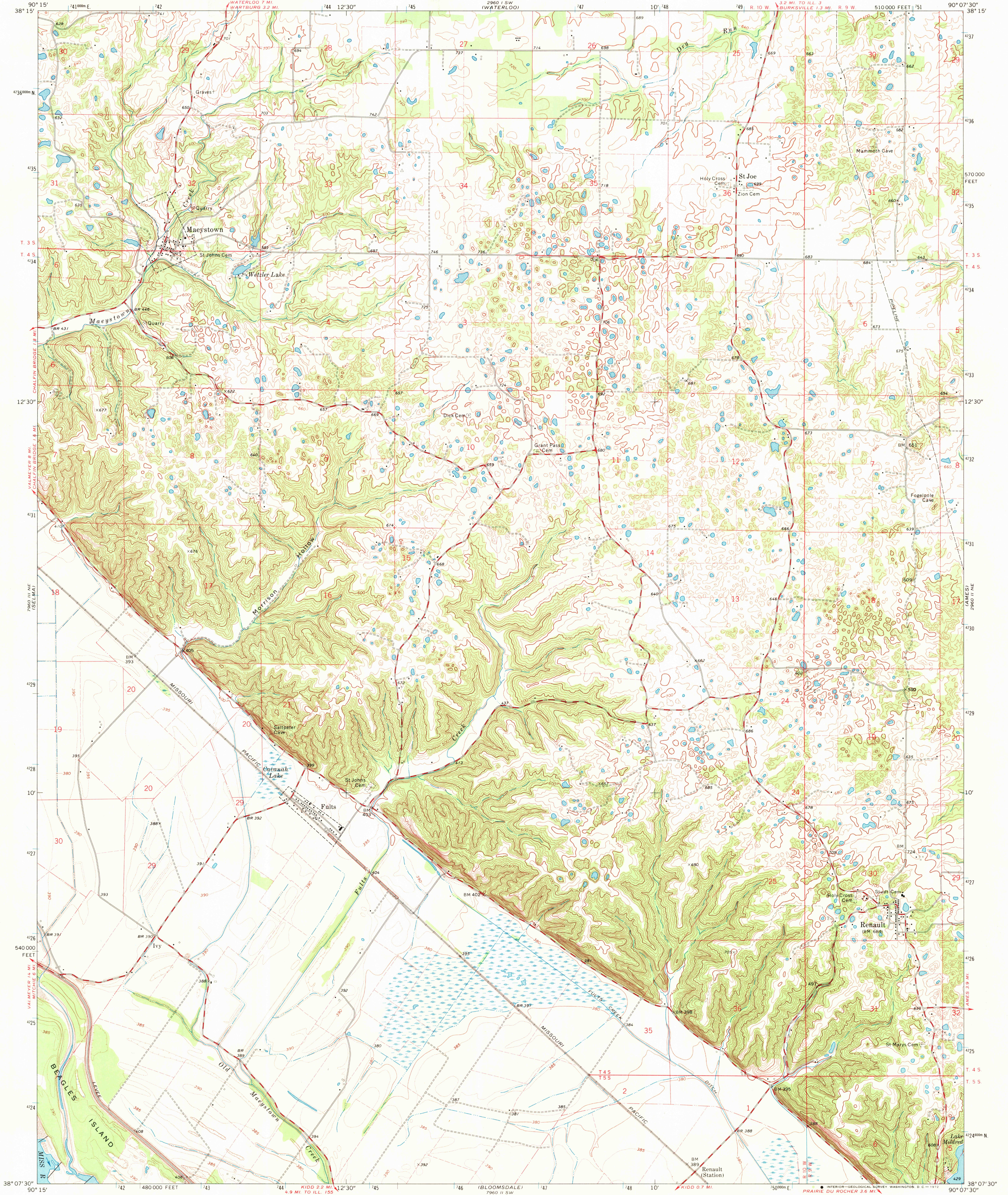


UNITED STATES
DEPARTMENT OF THE INTERIOR
GEOLOGICAL SURVEY

RENAULT QUADRANGLE
ILLINOIS-MONROE CO.
7.5 MINUTE SERIES (TOPOGRAPHIC)
NW 1/4 RENAULT 15' QUADRANGLE



Mapped, edited, and published by the Geological Survey
Control by USGS and USC&GS
Topography by photogrammetric methods from aerial
photographs taken 1968. Field checked 1970.
Polyconic projection. 1927 North American datum
10,000-foot grid based on Illinois coordinate system, west zone
1000-meter Universal Transverse Mercator grid ticks,
zone 15, shown in blue
Fine red dashed lines indicate selected fence and field lines where
generally visible on aerial photographs. This information is unchecked

UTM GRID AND 1970 MAGNETIC NORTH
DECLINATION AT CENTER OF SHEET

SCALE 1:24,000
CONTOUR INTERVAL 20 FEET
DOTTED LINES REPRESENT 5-FOOT CONTOURS
DATUM IS MEAN SEA LEVEL

ILLINOIS
QUADRANGLE LOCATION

ROAD CLASSIFICATION
Secondary highway, all weather. Light-duty road, all weather,
hard surface.
Unimproved road, fair or dry
weather

RENAULT, ILL.
NW 1/4 RENAULT 15' QUADRANGLE
N3807.5-W9007.5/7.5

1970
AMS 2960 II NW-SERIES V863

2160
FEB 1 1972
USGS
HISTORICAL FILE
TOPOGRAPHIC DIVISION