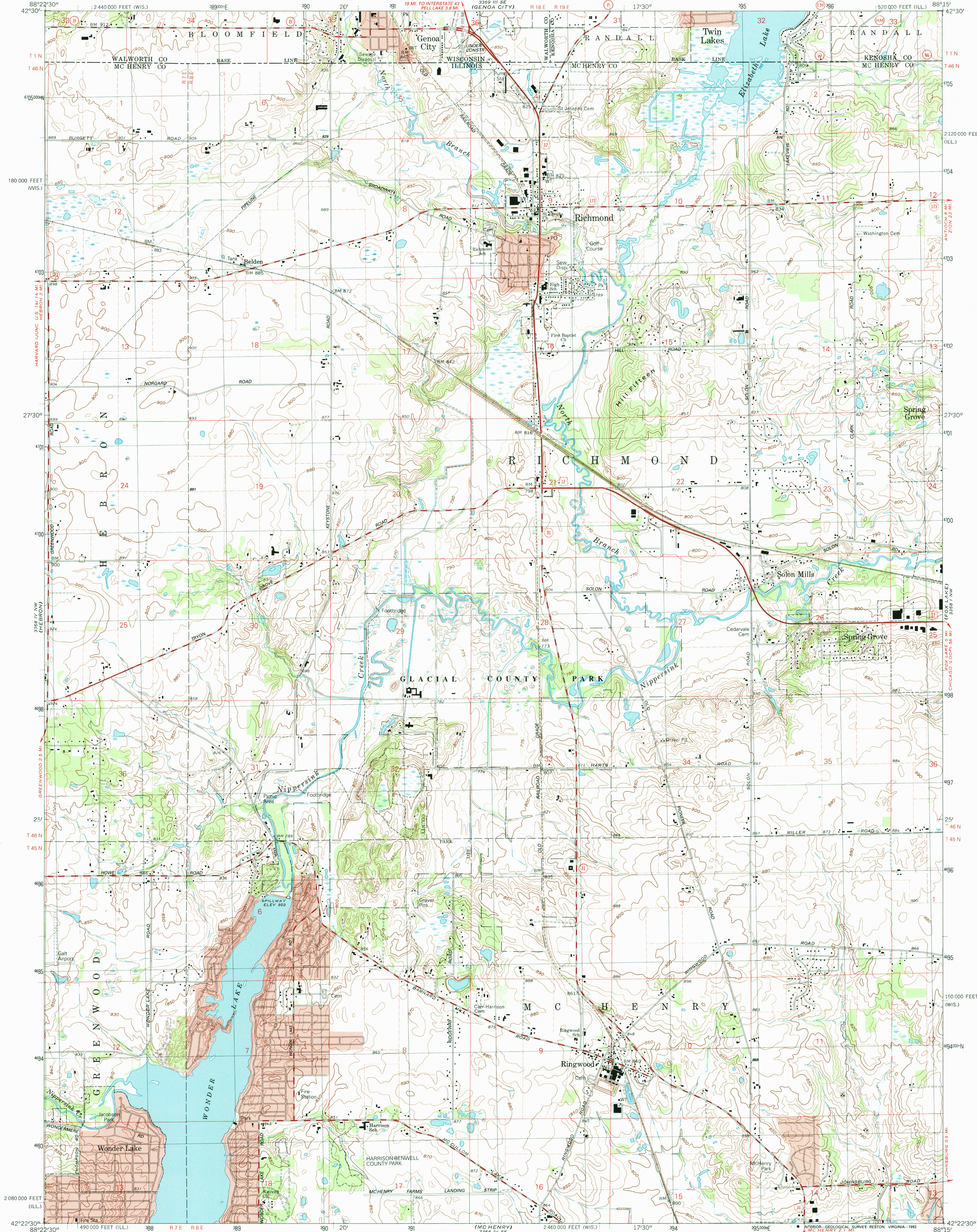
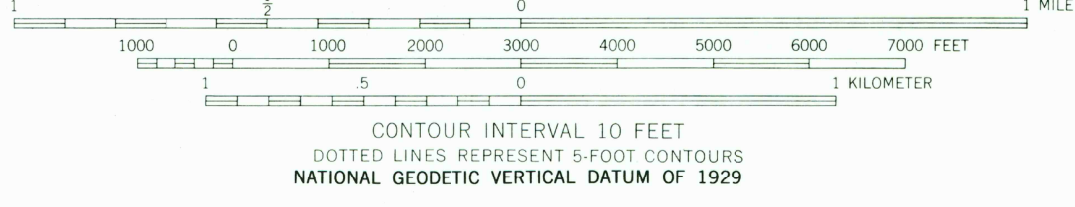
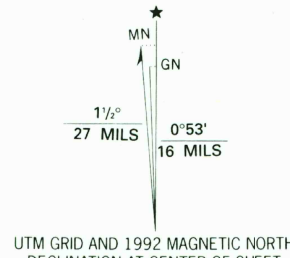


UNITED STATES  
DEPARTMENT OF THE INTERIOR  
GEOLOGICAL SURVEY

RICHMOND QUADRANGLE  
ILLINOIS-WISCONSIN  
7.5 MINUTE SERIES (TOPOGRAPHIC)  
NE 1/4 MC HENRY 15' QUADRANGLE



Produced by the United States Geological Survey  
Control by USGS and NOS/NOAA  
Topography by photogrammetric methods from aerial photographs  
taken 1961. Field checked 1963. Revised from aerial photographs  
taken 1988. Field checked 1991. Map edited 1992  
Projection: Illinois coordinate system, east zone  
(transverse Mercator)  
10,000-foot grid ticks: Illinois coordinate system  
east zone and Wisconsin coordinate system, south zone  
1000-meter Universal Transverse Mercator grid, zone 16  
1927 North American Datum  
The difference between 1927 North American Datum and North  
American Datum of 1983 (NAD 83) for 7.5-minute intersections  
is given in USGS Bulletin 1875. The NAD 83 is shown by  
dashed corner ticks  
Red tint indicates areas in which only landmark buildings are shown  
Fine red dashed lines indicate selected fence and field lines where  
generally visible on aerial photographs. This information is unchecked



COMPLIES WITH U.S. GEOLOGICAL SURVEY STANDARDS FOR SPATIAL ACCURACY—CLASS 2  
FOR SALE BY U. S. GEOLOGICAL SURVEY, DENVER, COLORADO 80225, OR RESTON, VIRGINIA 22092  
ILLINOIS GEOLOGICAL SURVEY, CHAMPAIGN, ILLINOIS 61820  
AND WISCONSIN GEOLOGICAL AND NATURAL HISTORY SURVEY, MADISON, WISCONSIN 53706  
A FOLDER DESCRIBING TOPOGRAPHIC MAPS AND SYMBOLS IS AVAILABLE ON REQUEST

ROAD CLASSIFICATION  
Primary highway, hard surface ————  
Secondary highway, hard surface ————  
Unimproved road ————  
Interstate Route ————  
U. S. Route ————  
State Route ————  
Light-duty road, hard or improved surface ————  
Unimproved road ————  
Interstate Route ————  
U. S. Route ————  
State Route ————  
RICHMOND, ILL.-WIS.  
NE 1/4 MC HENRY 15' QUADRANGLE  
42088-D3-TF-024  
1992  
DMA 3368 IV NE—SERIES V863

