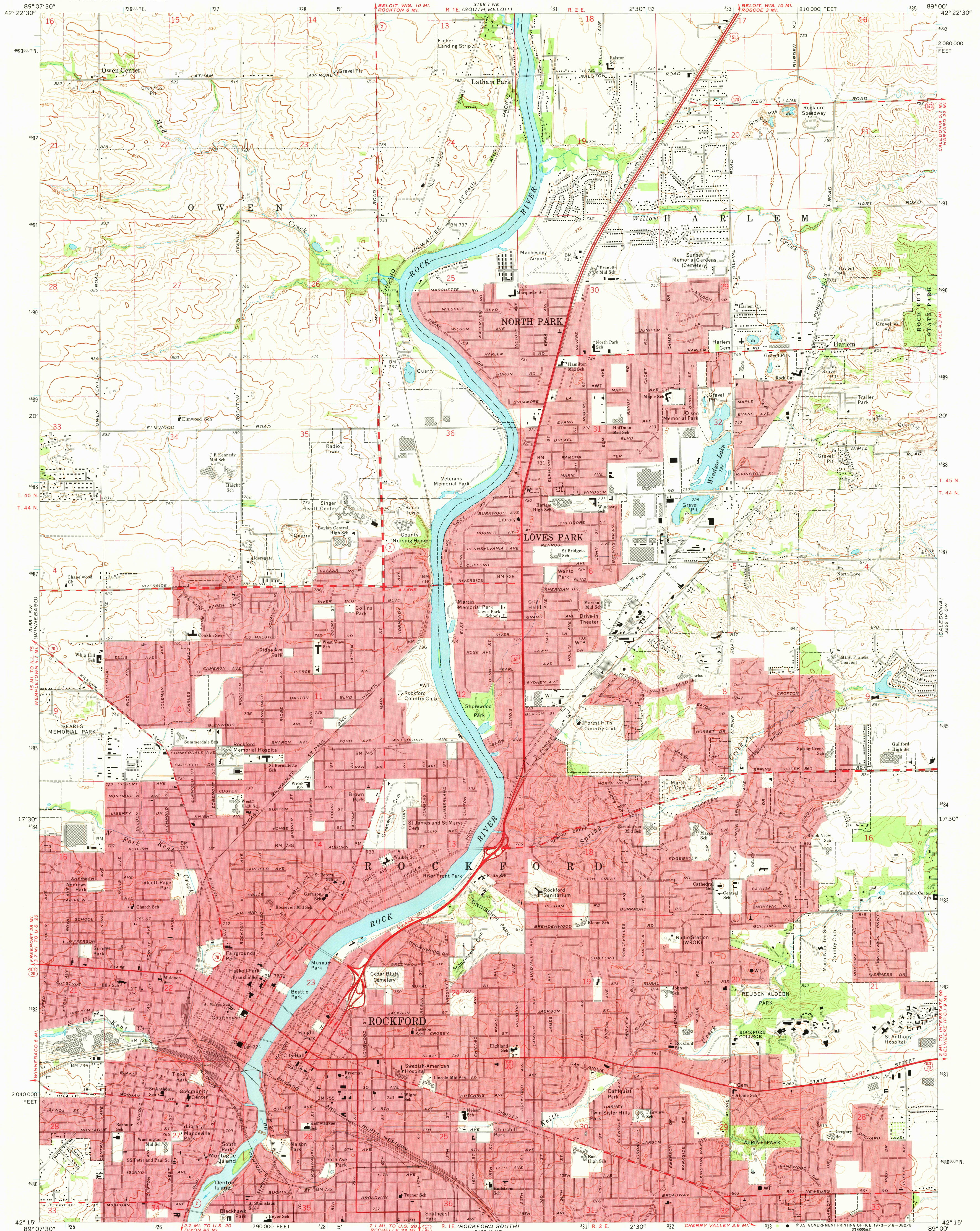


3168' NW  
(SHIRLAND)

UNITED STATES  
DEPARTMENT OF THE INTERIOR  
GEOLOGICAL SURVEY

ROCKFORD NORTH QUADRANGLE  
ILLINOIS-WINNEBAGO CO.  
7.5 MINUTE SERIES (TOPOGRAPHIC)  
SE/4 ROCKFORD 15' QUADRANGLE

3268' NW  
(BELVIDERE NW)



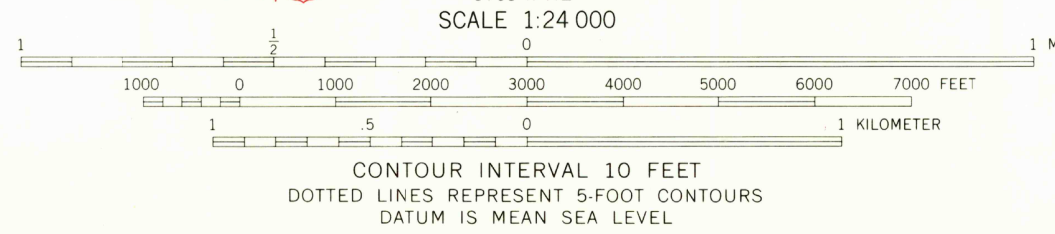
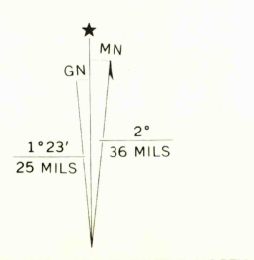
Mapped, edited, and published by the Geological Survey  
Control by USGS and USC&GS

Topography by photogrammetric methods from aerial  
photographs taken 1970. Field checked 1971  
Supersedes Rockford map dated 1949

Projection and 10,000-foot grid ticks: Illinois coordinate  
system, west zone (transverse Mercator)  
1000-meter Universal Transverse Mercator grid ticks,  
zone 16, shown in blue. 1927 North American datum

Red tint indicates areas in which only landmark buildings are shown

Fine red dashed lines indicate selected fence and field lines where  
generally visible on aerial photographs. This information is unchecked



THIS MAP COMPLIES WITH NATIONAL MAP ACCURACY STANDARDS  
FOR SALE BY U. S. GEOLOGICAL SURVEY, WASHINGTON, D. C. 20242  
AND BY THE STATE GEOLOGICAL SURVEY, URBANA, ILLINOIS 61801  
A FOLDER DESCRIBING TOPOGRAPHIC MAPS AND SYMBOLS IS AVAILABLE ON REQUEST



QUADRANGLE LOCATION

ROAD CLASSIFICATION  
Primary highway, hard surface ———— improved surface  
Secondary highway, hard surface ———— unimproved road  
Interstate Route ———— U. S. Route ———— State Route

USGS  
Topographic File  
Historical File

ROCKFORD NORTH, ILL.  
SE/4 ROCKFORD 15' QUADRANGLE  
N4215-W8900/7.5

1971

AMS 3168 I SE-SERIES V863

Hoer  
3500  
50 plane  
SEP 11 1973