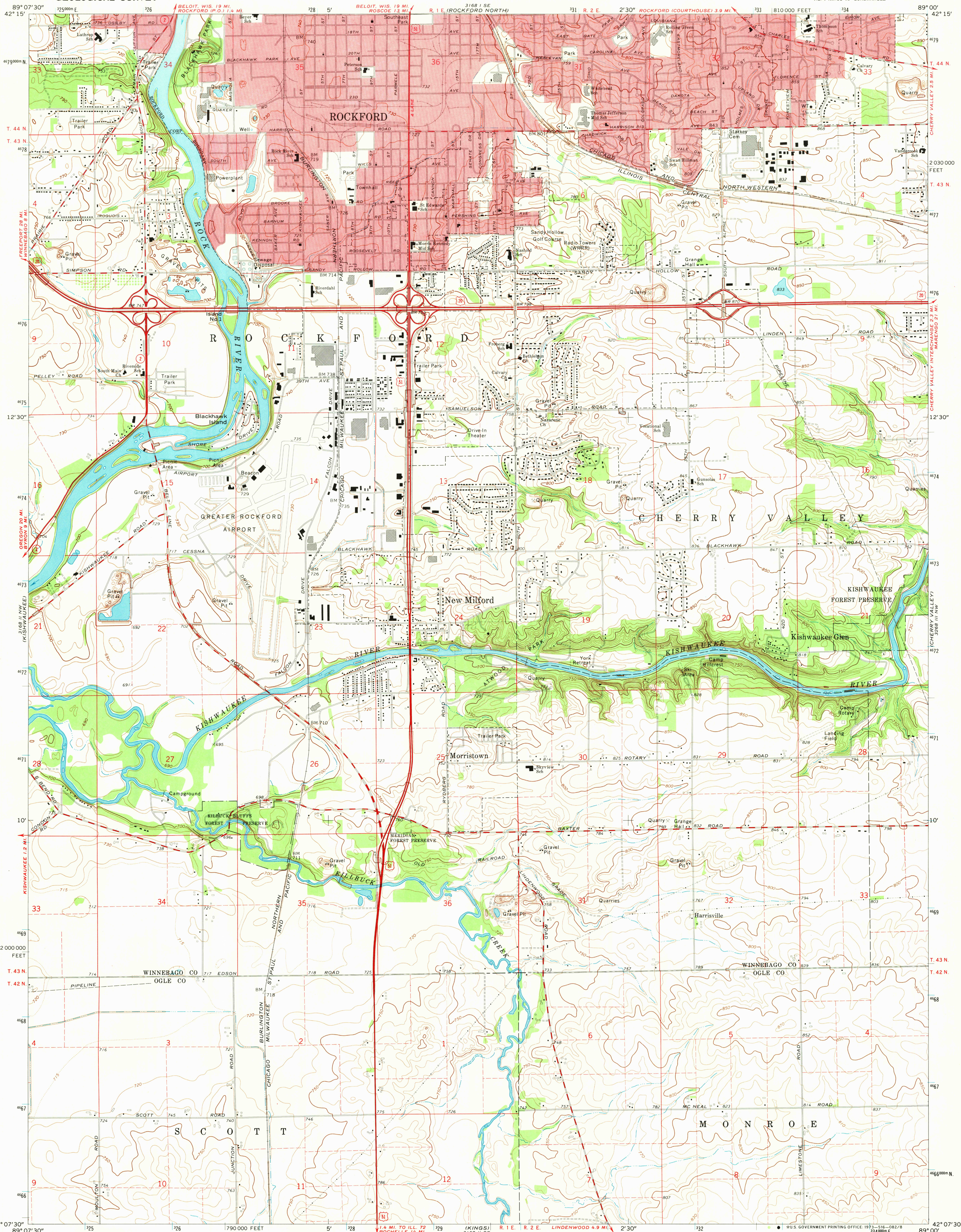
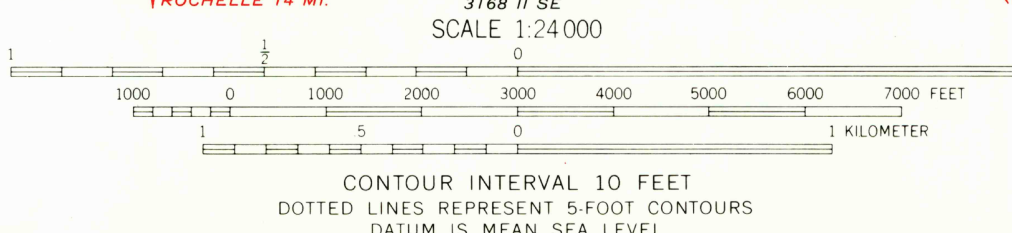


UNITED STATES
DEPARTMENT OF THE INTERIOR
GEOLOGICAL SURVEY

ROCKFORD SOUTH QUADRANGLE
ILLINOIS
7.5 MINUTE SERIES (TOPOGRAPHIC)
NE 1/4 KINGS 15' QUADRANGLE



Mapped, edited, and published by the Geological Survey
Control by USGS and USCGS
Topography by photogrammetric methods from aerial
photographs taken 1970. Field checked 1971
Supersedes Camp Grant map dated 1949
Projection and 10,000-foot grid ticks: Illinois coordinate
system, west zone (transverse Mercator)
1000-meter Universal Transverse Mercator grid ticks,
zone 16, shown in blue. 1927 North American datum
Red tint indicates areas in which only landmark buildings are shown
Fine red dashed lines indicate selected fence and field lines where
generally visible on aerial photographs. This information is unchecked



ROAD CLASSIFICATION
Primary highway, hard surface ———— Improved surface
Secondary highway, hard surface ———— Unimproved road
Interstate Route ———— U.S. Route ———— State Route

THIS MAP COMPLIES WITH NATIONAL MAP ACCURACY STANDARDS
FOR SALE BY U.S. GEOLOGICAL SURVEY, WASHINGTON, D.C. 20242
AND BY THE STATE GEOLOGICAL SURVEY, URBANA, ILLINOIS 61801
A FOLDER DESCRIBING TOPOGRAPHIC MAPS AND SYMBOLS IS AVAILABLE ON REQUEST

ROCKFORD SOUTH, ILL.
NE 1/4 KINGS 15' QUADRANGLE
N 4207.5—W 8900/7.5
1971

AMS 3168 II NE—SERIES V863

Handwritten notes: *How 3500 SEP 11 1973 50 plane*