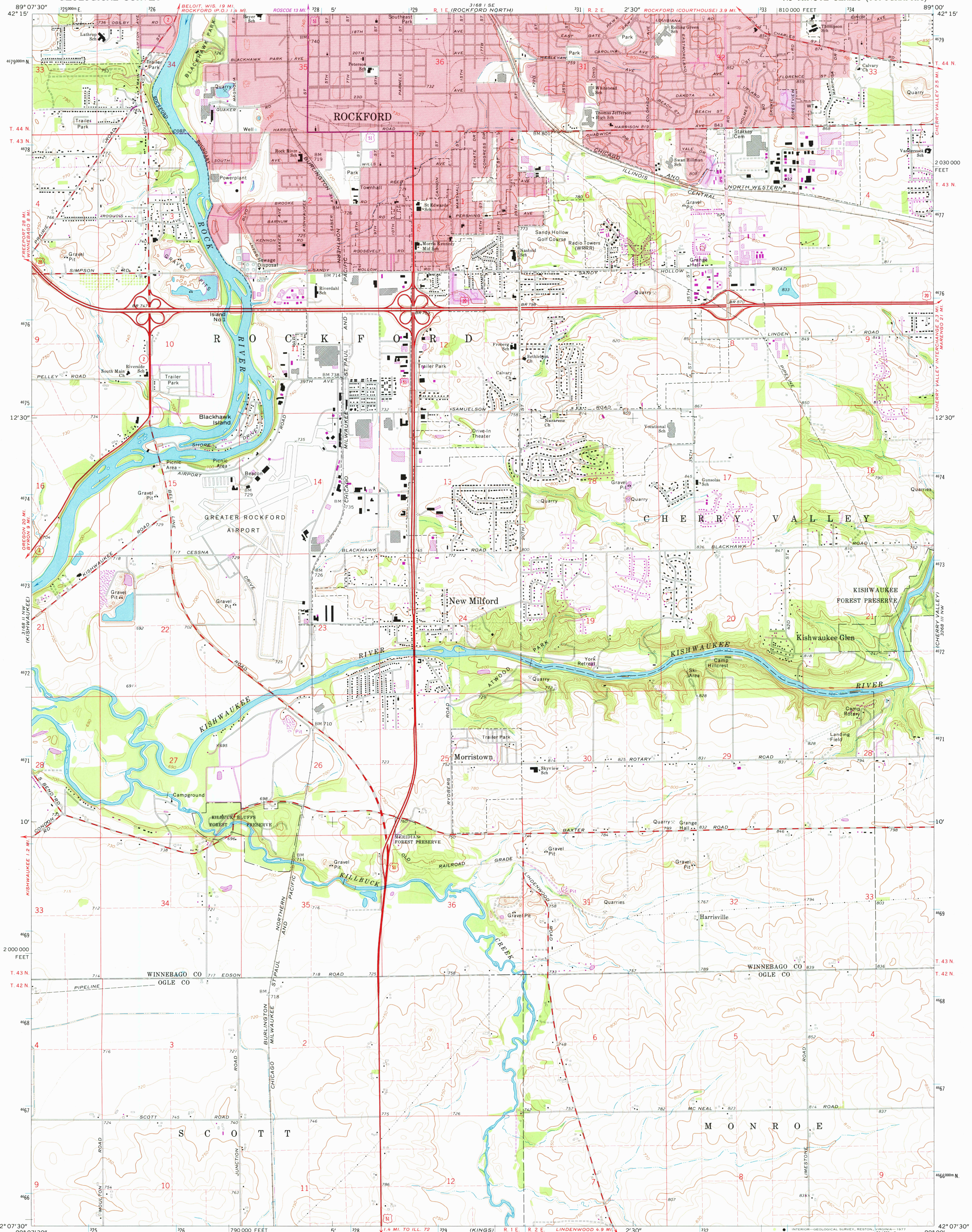


UNITED STATES  
DEPARTMENT OF THE INTERIOR  
GEOLOGICAL SURVEY

ROCKFORD SOUTH QUADRANGLE  
ILLINOIS  
7.5 MINUTE SERIES (TOPOGRAPHIC)



Mapped, edited, and published by the Geological Survey

Control by USGS and USC&GS

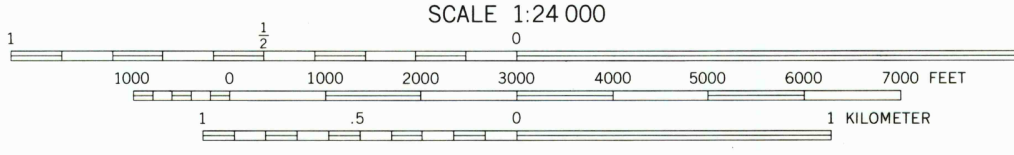
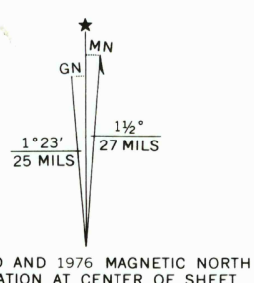
Topography by photogrammetric methods from aerial photographs taken 1970. Field checked 1971. Supersedes Camp Grant map dated 1949.

Projection and 10,000-foot grid ticks: Illinois coordinate system, west zone (transverse Mercator). 1000-meter Universal Transverse Mercator grid ticks, zone 16, shown in blue. 1927 North American datum.

Red tint indicates areas in which only landmark buildings are shown. Fine red dashed lines indicate selected fence and field lines where generally visible on aerial photographs. This information is unchecked.

Revisions shown in purple compiled from aerial photographs taken 1976. This information not field checked.

Purple tint indicates extension of urban areas.



CONTOUR INTERVAL 10 FEET  
DOTTED LINES REPRESENT 5-FOOT CONTOURS  
NATIONAL GEODETIC VERTICAL DATUM OF 1929

THIS MAP COMPLIES WITH NATIONAL MAP ACCURACY STANDARDS FOR SALE BY U.S. GEOLOGICAL SURVEY, RESTON, VIRGINIA 22092 AND BY THE STATE GEOLOGICAL SURVEY, URBANA, ILLINOIS 61801. A FOLDER DESCRIBING TOPOGRAPHIC MAPS AND SYMBOLS IS AVAILABLE ON REQUEST.



QUADRANGLE LOCATION

| ROAD CLASSIFICATION             |   |
|---------------------------------|---|
| Primary highway, hard surface   | Light-duty road, hard or improved surface |
| Secondary highway, hard surface | Unimproved road                           |
| Interstate Route                | U.S. Route                                |
|                                 | State Route                               |

USGS  
Historical File  
Topographic

ROCKFORD SOUTH, ILL.  
N4207.5-W8900.7.5

1971  
PHOTOREVISED 1976  
AMS 3168 II NE-SERIES V863

SEP 19 1977