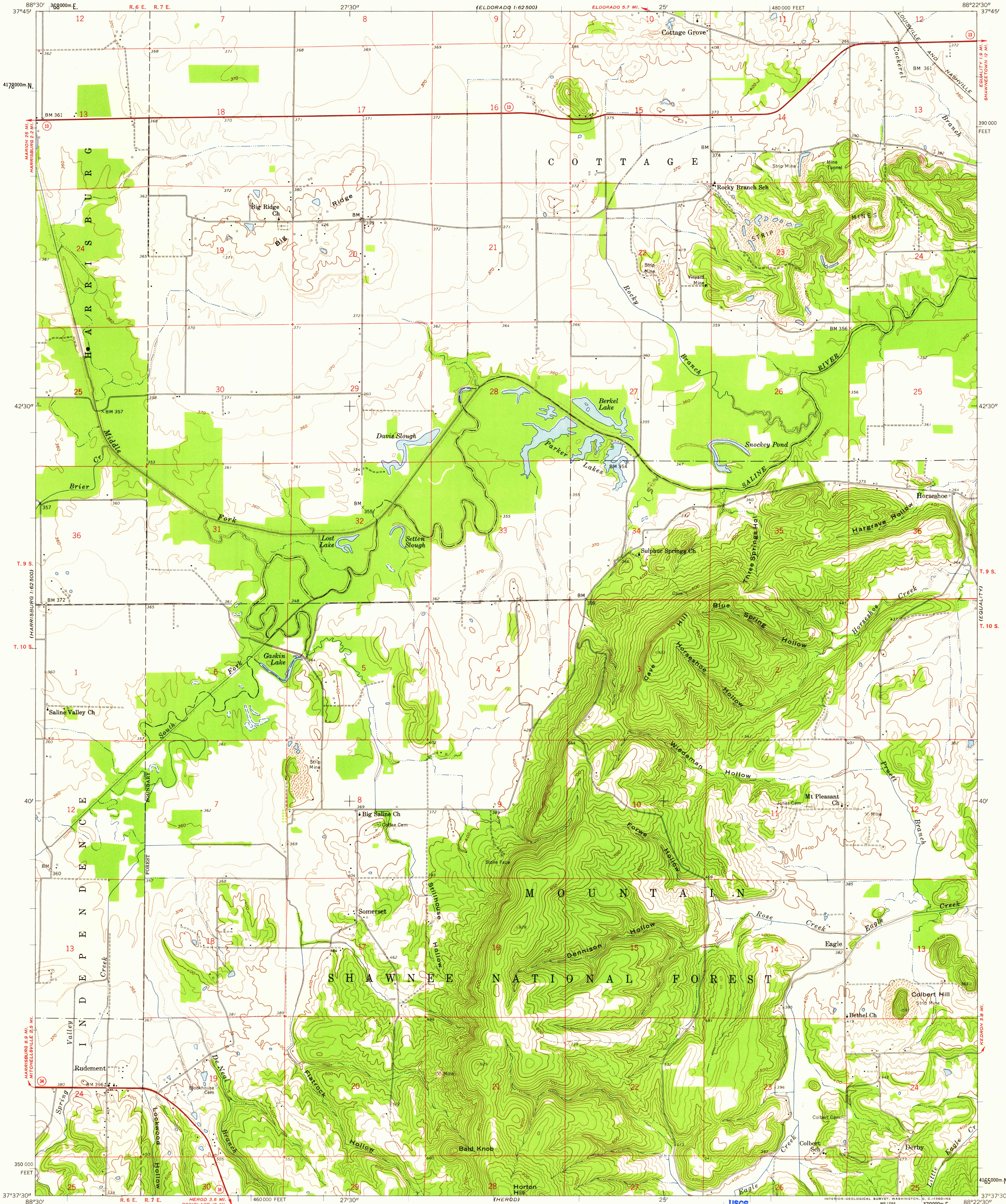


UNITED STATES
DEPARTMENT OF THE INTERIOR
GEOLOGICAL SURVEY

STATE OF ILLINOIS
WILLIAM G. STRATTON, GOVERNOR
DEPARTMENT OF REGISTRATION AND EDUCATION
VERA M. BINKS, DIRECTOR
GEOLOGICAL SURVEY DIVISION, JOHN C. FRYE, CHIEF
URBANA, ILLINOIS

RUDEMENT QUADRANGLE
ILLINOIS—SALINE CO.
7.5 MINUTE SERIES (TOPOGRAPHIC)
NW 1/4 EQUALITY 15' QUADRANGLE



Mapped, edited, and published by the Geological Survey
Control by USGS, USC&GS, and USCE
Topography from aerial photographs by photogrammetric methods
and by planetable surveys 1959. Aerial photographs taken 1957
Polyconic projection. 1927 North American datum
10,000-foot grid based on Illinois coordinate system, east zone
1000-meter Universal Transverse Mercator grid ticks,
zone 16, shown in blue

TRUE NORTH
MAGNETIC NORTH
APPROXIMATE MEAN
DECLINATION, 1959

SCALE 1:24,000
1 1000 0 1000 2000 3000 4000 5000 6000 7000 FEET
1 KILOMETER
CONTOUR INTERVAL 20 FEET
DOTTED LINES REPRESENT 5-FOOT CONTOURS
DATUM IS MEAN SEA LEVEL

USGS
Historical File
Topographic Division



ROAD CLASSIFICATION
Heavy-duty ——— Light-duty ———
Unimproved dirt =====
State Route ○

U.S.G.S.
FILE COPY
TOPOGRAPHIC DIVISION

RUDEMENT, ILL.
NW 1/4 EQUALITY 15' QUADRANGLE
N 3737.5—W 8822.5/7.5

1959

U.S.G.S.
1:25,000