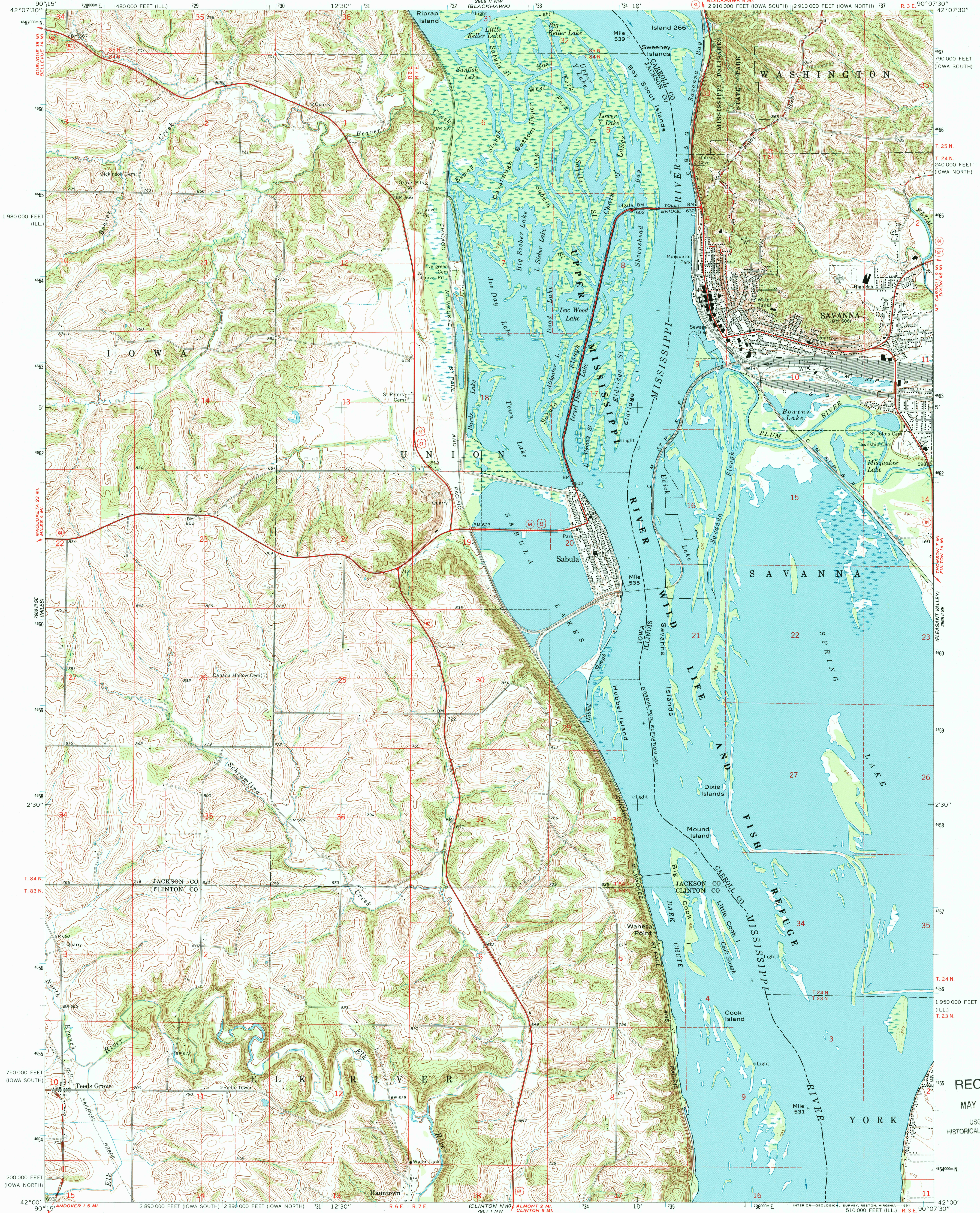


UNITED STATES
DEPARTMENT OF THE INTERIOR
GEOLOGICAL SURVEY

SAVANNA QUADRANGLE
ILLINOIS-IOWA
7.5 MINUTE SERIES (TOPOGRAPHIC)
SW/4 SAVANNA 15' QUADRANGLE



Mapped, edited, and published by the Geological Survey
Control by USGS and USC&GS
Topography by photogrammetric methods from aerial
photographs taken 1966 and planetable surveys 1967
Polyconic projection. 1927 North American datum
10,000-foot grids based on Iowa coordinate system,
north and south zones, and Illinois coordinate system,
west zone
1000-meter Universal Transverse Mercator grid ticks,
zone 15, shown in blue
The difference between 1927 North American Datum and North
American Datum of 1983 (NAD 83) for 7.5-minute intersections
is given in USGS Bulletin 1875. The NAD 83 is shown by
dashed corner ticks
Map photoinspired 1990
No major culture or drainage changes observed

There may be private inholdings within the boundaries of
the National or State reservations shown on this map

THIS MAP COMPLIES WITH NATIONAL MAP ACCURACY STANDARDS
FOR SALE BY THE U. S. GEOLOGICAL SURVEY, DENVER, COLORADO 80225, OR RESTON, VIRGINIA 22092
STATE GEOLOGICAL SURVEY, CHAMPAIGN, ILLINOIS 61820
AND IOWA GEOLOGICAL SURVEY, IOWA CITY, IOWA 52240
A FOLDER DESCRIBING TOPOGRAPHIC MAPS AND SYMBOLS IS AVAILABLE ON REQUEST

ROAD CLASSIFICATION
Heavy-duty ——— Light-duty ———
Medium-duty ——— Unimproved dirt ———
U. S. Route ——— State Route ———

SAVANNA, ILL.-IOWA
SW/4 SAVANNA 15' QUADRANGLE
42090A2-TF-024

1967
PHOTOINSPECTED 1990
DMA 7968 II SW-SERIES V876

RECEIVED
MAY 31 1999
USGS NMD
HISTORICAL MAP ARCHIVES

