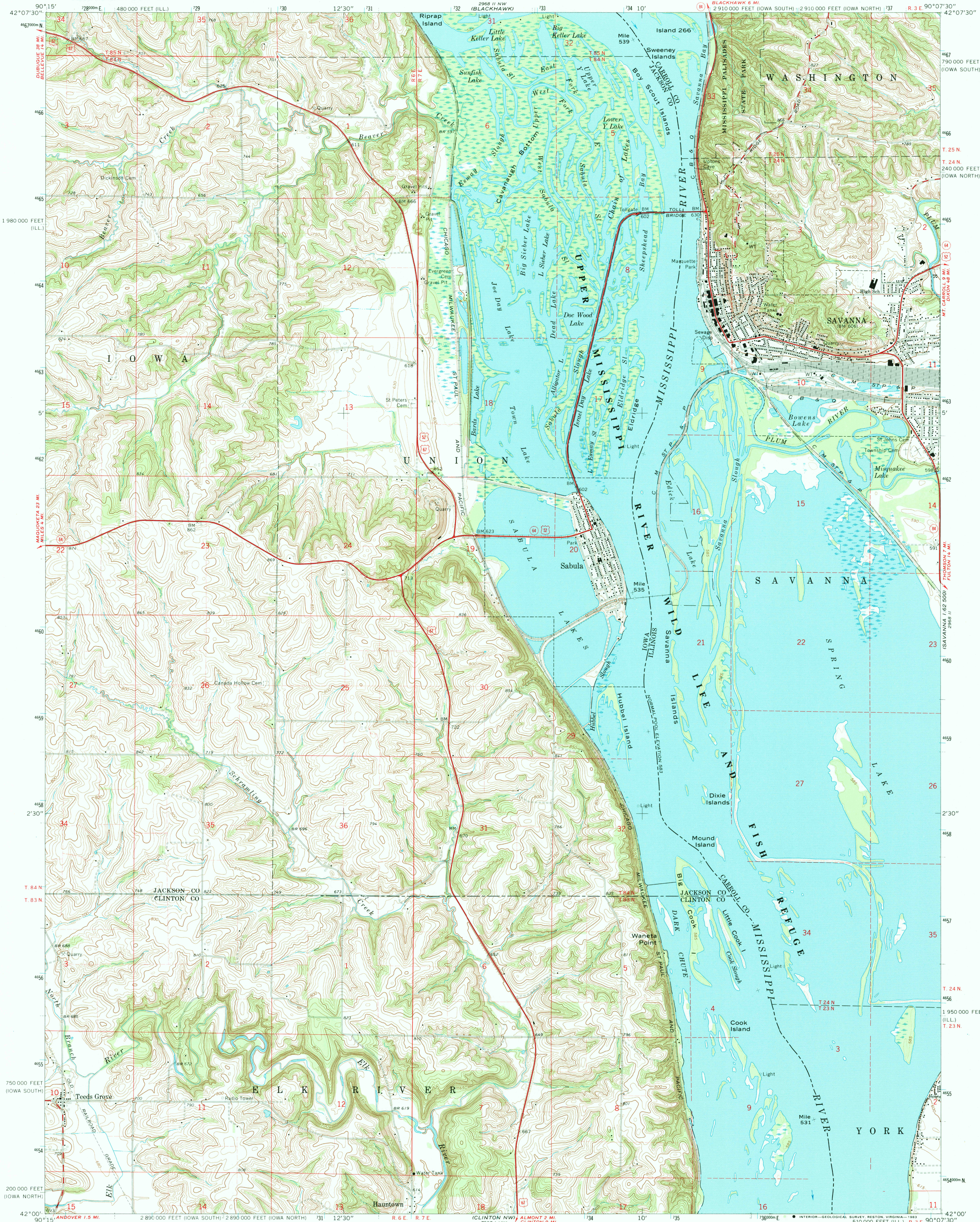


UNITED STATES
DEPARTMENT OF THE INTERIOR
GEOLOGICAL SURVEY

SAVANNA QUADRANGLE
ILLINOIS-IOWA
7.5 MINUTE SERIES (TOPOGRAPHIC)



Maped, edited, and published by the Geological Survey
Control by USGS and USC&GS
Topography by photogrammetric methods from aerial
photographs taken 1966 and planetable surveys 1967
Polyconic projection. 1927 North American datum
10,000-foot grids based on Iowa coordinate system,
north and south zones, and Illinois coordinate system,
west zone
1000-meter Universal Transverse Mercator grid ticks,
zone 15, shown in blue
To place on the predicted North American Datum 1983
move the projection lines 3 meters north and
10 meters east as shown by dashed corner ticks
Map photoinspected 1974
No major culture or drainage changes observed

There may be private inholdings within the boundaries of
the National or State reservations shown on this map

THIS MAP COMPLIES WITH NATIONAL MAP ACCURACY STANDARDS
FOR SALE BY THE U. S. GEOLOGICAL SURVEY, DENVER, COLORADO 80225, OR RESTON, VIRGINIA 22092
STATE GEOLOGICAL SURVEY, CHAMPAIGN, ILLINOIS 61820
AND IOWA GEOLOGICAL SURVEY, IOWA CITY, IOWA 52240
A FOLDER DESCRIBING TOPOGRAPHIC MAPS AND SYMBOLS IS AVAILABLE ON REQUEST

ROAD CLASSIFICATION
Heavy-duty ——— Light-duty ———
Medium-duty ——— Unimproved dirt ———
U. S. Route ——— State Route ———

SAVANNA, ILL.-IOWA
SW/4 SAVANNA 15' QUADRANGLE
N4200-W9007.5/7.5

1967
PHOTOINSPECTED 1974
DMA 7968 II SW-SERIES V876

DEC 02 1982
CLINTON 1:24,000