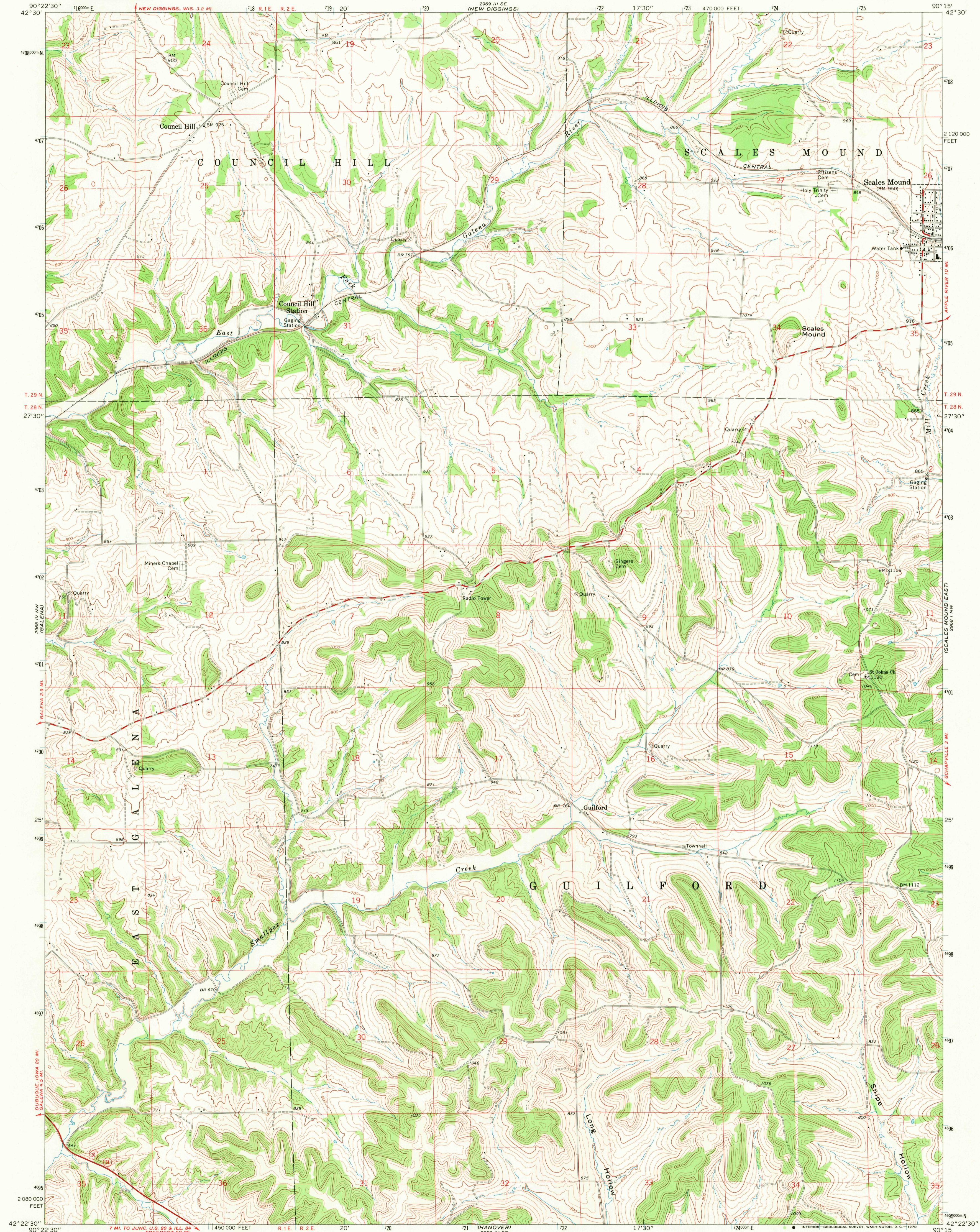


2968 IV SW  
(CUBA CITY)

UNITED STATES  
DEPARTMENT OF THE INTERIOR  
GEOLOGICAL SURVEY

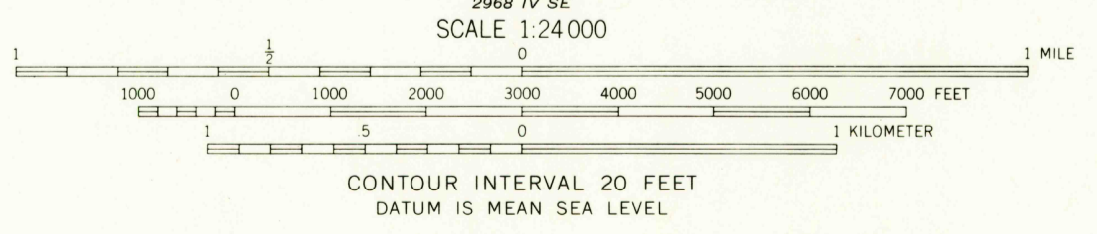
SCALES MOUND WEST QUADRANGLE  
ILLINOIS—JO DAVIESS CO.  
7.5 MINUTE SERIES (TOPOGRAPHIC)  
NE/4 GALENA 15' QUADRANGLE

2968 I NW  
(SHULSBURG)



Maped, edited, and published by the Geological Survey  
Control by USGS and USC&GS  
Topography by photogrammetric methods from aerial  
photographs taken 1966. Field checked 1968  
Polyconic projection. 1927 North American datum  
10,000-foot grid based on Illinois coordinate system, west zone  
1000-meter Universal Transverse Mercator grid ticks,  
zone 15, shown in blue  
Fine red dashed lines indicate selected fence and field lines where  
generally visible on aerial photographs. This information is unchecked

UTM GRID AND 1968 MAGNETIC NORTH  
DECLINATION AT CENTER OF SHEET



THIS MAP COMPLIES WITH NATIONAL MAP ACCURACY STANDARDS  
FOR SALE BY U. S. GEOLOGICAL SURVEY, WASHINGTON, D. C. 20242  
AND BY THE STATE GEOLOGICAL SURVEY, URBANA, ILLINOIS 61801  
A FOLDER DESCRIBING TOPOGRAPHIC MAPS AND SYMBOLS IS AVAILABLE ON REQUEST

USGS  
Historical File  
Topographic Division



ROAD CLASSIFICATION  
Primary highway, all weather, hard surface  
Secondary highway, all weather, hard surface  
Light-duty road, all weather, improved surface  
Unimproved road, fair or dry weather  
U. S. Route  
State Route

U.S.G.S.  
FILE COPY  
TOPOGRAPHIC DIVISION

SCALES MOUND WEST, ILL.  
NE/4 GALENA 15' QUADRANGLE  
N4222.5-W9015.7.5  
1968  
AMS 2968 IV NE—SERIES V863

2720  
DEC 4 1970