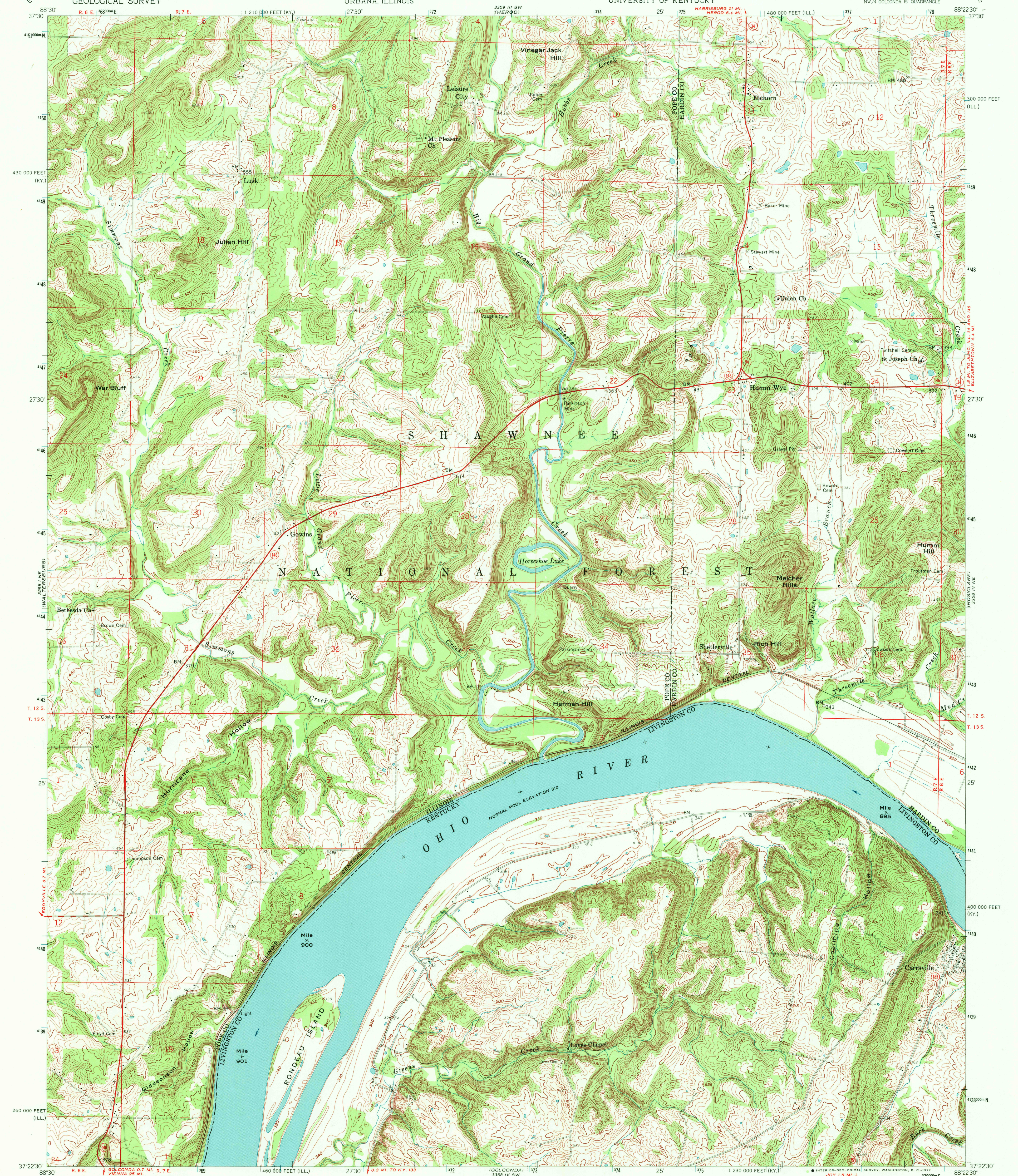


UNITED STATES
DEPARTMENT OF THE INTERIOR
GEOLOGICAL SURVEY

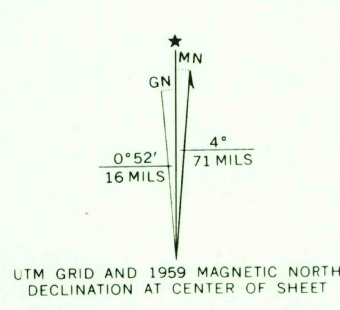
STATE OF ILLINOIS
WILLIAM G. STRATTON, GOVERNOR
DEPARTMENT OF REGISTRATION AND EDUCATION
VERA M. BINKS, DIRECTOR
GEOLOGICAL SURVEY DIVISION, JOHN C. FRYE, CHIEF
URBANA, ILLINOIS

STATE OF KENTUCKY
KENTUCKY GEOLOGICAL SURVEY
UNIVERSITY OF KENTUCKY

SHETLerville QUADRANGLE
ILLINOIS-KENTUCKY
7.5 MINUTE SERIES (TOPOGRAPHIC)
NW/4 GOLCONDA 15 QUADRANGLE



Mapped, edited, and published by the Geological Survey
Control by USGS, USC&GS, and USCE
Topography in Illinois from aerial photographs by photogrammetric
methods. Aerial photographs taken 1957. Field check 1959
Topography in Kentucky from aerial photographs by photogrammetric
methods. Aerial photographs taken 1952. Field check 1954
Polyconic projection. 1927 North American datum
10,000-foot grids based on Illinois coordinate system, east zone
and Kentucky coordinate system, south zone
1000-meter Universal Transverse Mercator grid ticks,
zone 16, shown in blue
Unchecked elevations are shown in brown
The state boundary as shown represents the approximate position of the low
waterline as determined from U. S. Corps of Engineers Ohio River charts,
surveyed 1912, 1913, and supplementary information



SCALE 1:24,000
1 0000 0 1000 2000 3000 4000 5000 6000 7000 FEET
1 5 10 KILOMETER
CONTOUR INTERVAL 10 FEET
DATUM IS MEAN SEA LEVEL
THIS MAP COMPLIES WITH NATIONAL MAP ACCURACY STANDARDS
FOR SALE BY U. S. GEOLOGICAL SURVEY, WASHINGTON, D. C. 20242
STATE GEOLOGICAL SURVEY, URBANA, ILLINOIS 61801
KENTUCKY GEOLOGICAL SURVEY, LEXINGTON, KENTUCKY 40506
AND KENTUCKY DEPARTMENT OF COMMERCE, FRANKFORT, KENTUCKY 40601
A FOLDER DESCRIBING TOPOGRAPHIC MAPS AND SYMBOLS IS AVAILABLE ON REQUEST



ROAD CLASSIFICATION
Heavy-duty ——— Light-duty ———
Medium-duty - - - - - Unimproved dirt - - - - -
State Route (O) State Route (O)
JUL 20 1972
SHETLerville, ILL.-KY.
NW/4 GOLCONDA 15 QUADRANGLE
N3722.5-W8822.5/7.5
1959
AMS 3358 IV NW-SERIES V863