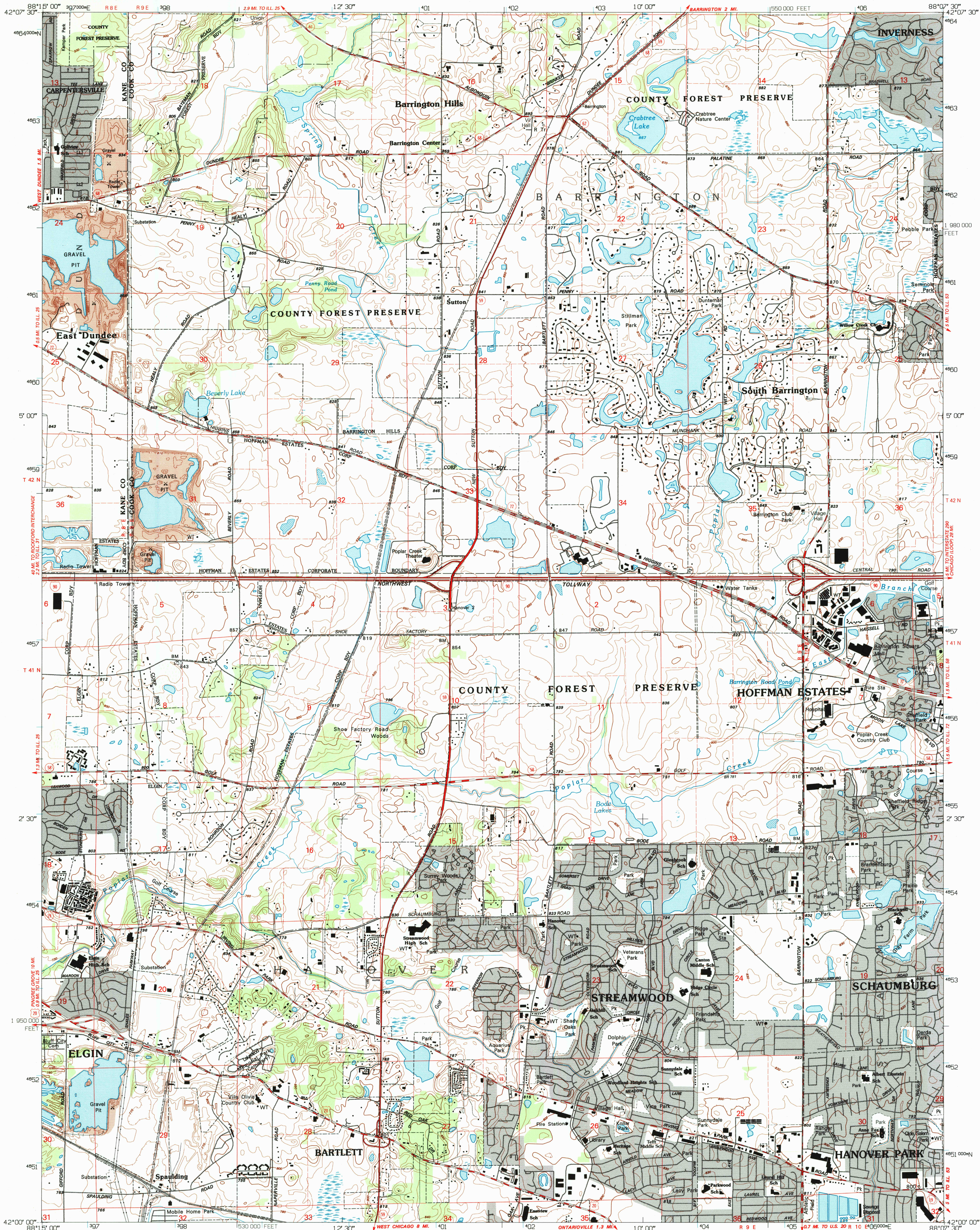
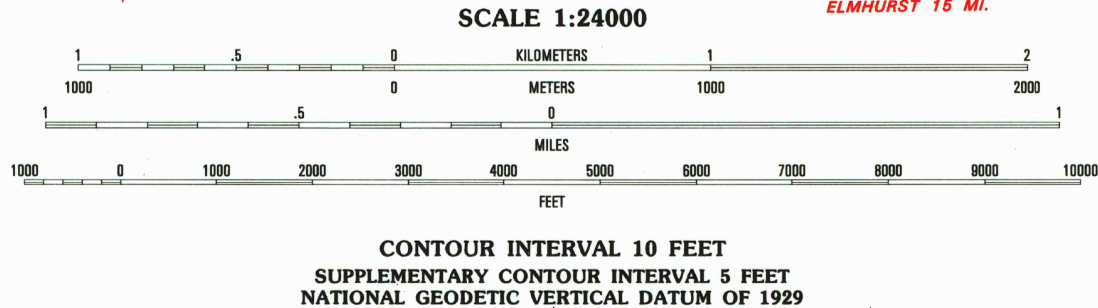
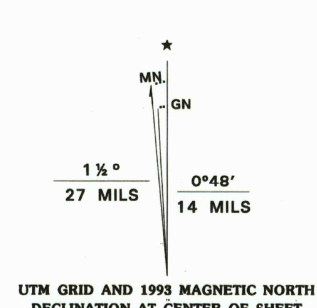


UNITED STATES
DEPARTMENT OF THE INTERIOR
GEOLOGICAL SURVEY

STREAMWOOD QUADRANGLE
ILLINOIS
7.5 MINUTE SERIES (TOPOGRAPHIC)
SW/4 BARRINGTON 15' QUADRANGLE



Produced by the United States Geological Survey
in cooperation with State of Illinois agencies
Control by USGS and NOS/NOAA
Topography by photogrammetric methods from aerial photographs
taken 1958. Field checked 1961. Revised from aerial photographs
taken 1988. Field checked 1993. Map edited 1993
Universal Transverse Mercator projection
10,000-foot grid ticks: Illinois coordinate
system, east zone
1000-meter Universal Transverse Mercator grid ticks, zone 16, shown in blue
1927 North American Datum (NAD 27)
North American Datum of 1983 (NAD 83) is shown by dashed corner ticks
The values of the shift between NAD 27 and NAD 83 for 7.5-minute
intersections are given in USGS Bulletin 1875
Gray tint indicates areas in which only landmark buildings are shown
Fine red dashed lines indicate selected fence and field lines where
generally visible on aerial photographs. This information is unchecked



ROAD CLASSIFICATION
Primary highway Light-duty road, hard or
hard surface improved surface
Secondary highway Unimproved road
Interstate Route U.S. Route State Route

QUADRANGLE LOCATION

1	2	3
4	5	6
7	8	9

1 Crystal Lake
2 Barrington
3 Lake Zurich
4 Elgin
5 Palatine
6 Geneva
7 West Chicago
8 Lombard

ADJOINING 7.5' QUADRANGLE NAMES

STREAMWOOD, ILL.
SW/4 BARRINGTON 15' QUADRANGLE
42088-A2-TF-024
1993
DMA 3368 II SW-SERIES V863

