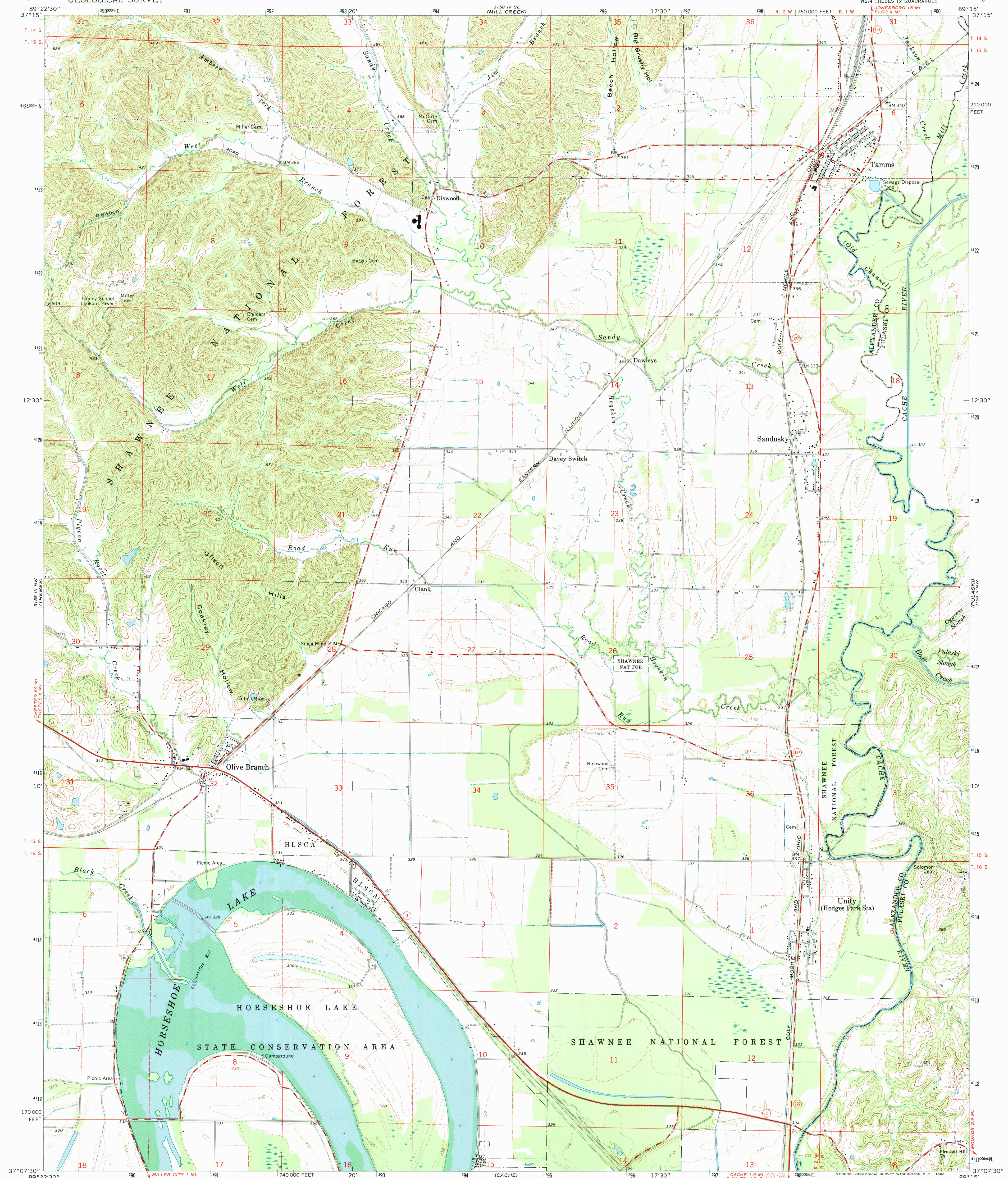


3158 IV SE
(MILL CREEK)

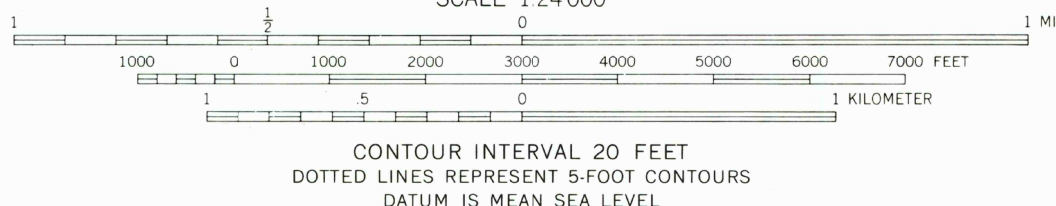
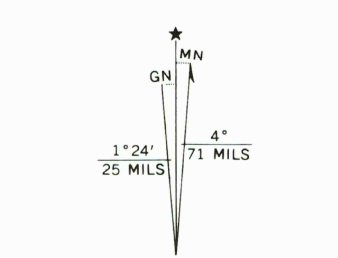
UNITED STATES
DEPARTMENT OF THE INTERIOR
GEOLOGICAL SURVEY

TAMMS QUADRANGLE
ILLINOIS
7.5 MINUTE SERIES (TOPOGRAPHIC)

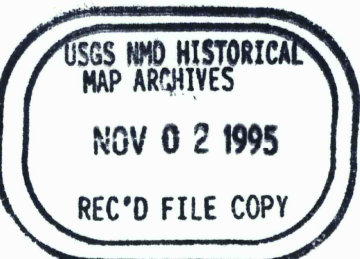
3158 I SW
(DOUGLAS)



Maped, edited, and published by the Geological Survey
Control by USGS and USC&GS
Topography by photogrammetric methods from aerial
photographs taken 1965 and planetable surveys 1967
Soundings compiled from charts furnished by
Illinois Department of Conservation
Polyconic projection. 1927 North American datum
10,000-foot grid based on Illinois coordinate system, west zone
1000-meter Universal Transverse Mercator grid ticks,
zone 16, shown in blue
Fine red dashed lines indicate selected fence and field lines where
generally visible on aerial photographs. This information is unchecked



THIS MAP COMPLIES WITH NATIONAL MAP ACCURACY STANDARDS
FOR SALE BY U. S. GEOLOGICAL SURVEY, WASHINGTON, D. C. 20242
AND BY THE STATE GEOLOGICAL SURVEY, URBANA, ILLINOIS 61801
A FOLDER DESCRIBING TOPOGRAPHIC MAPS AND SYMBOLS IS AVAILABLE ON REQUEST



TAMMS, ILL.
NE/4 THEBES 15' QUADRANGLE
N3707.5-W8915/7.5
1967
AMS 3158 III NE-SERIES V863

