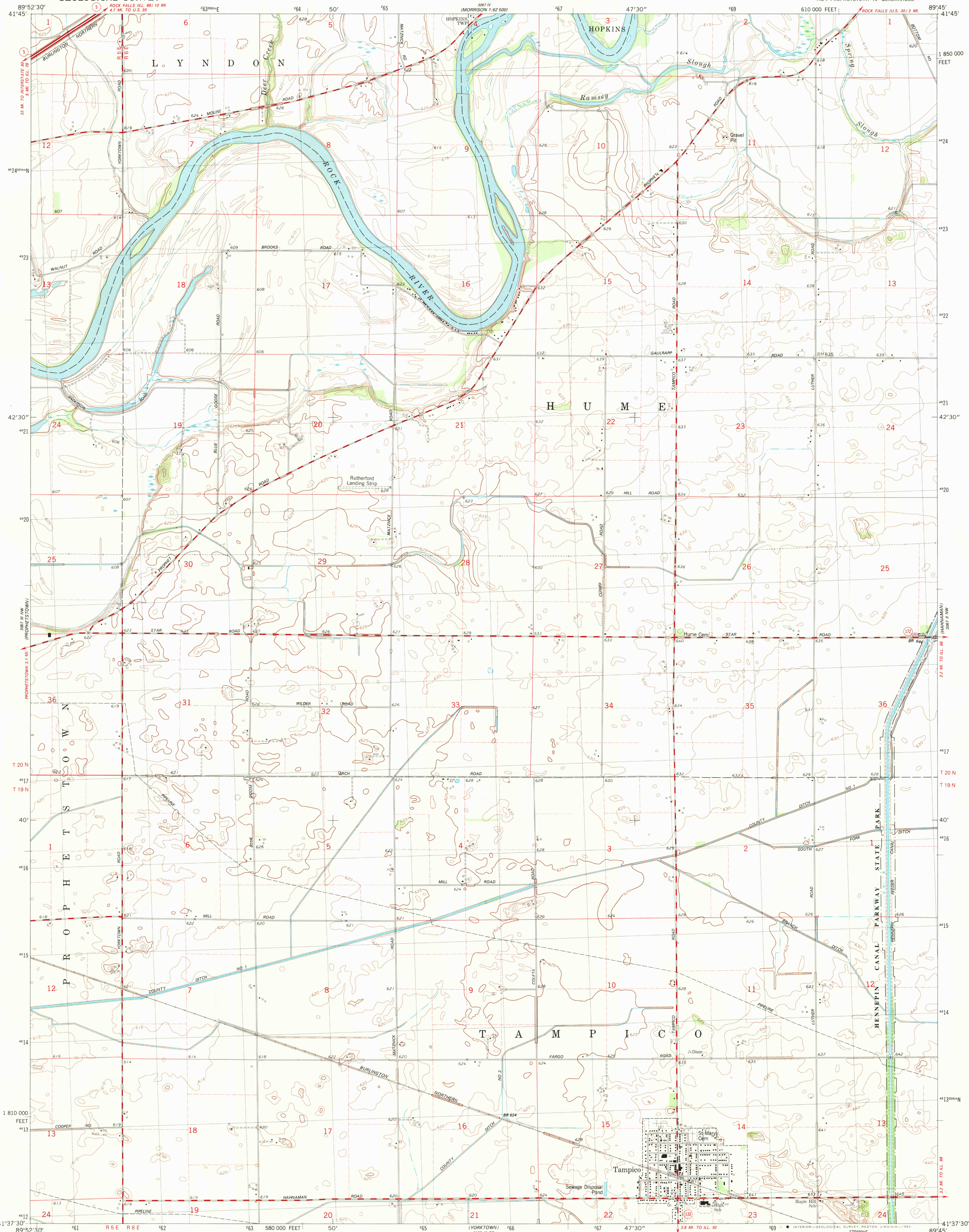


UNITED STATES  
DEPARTMENT OF THE INTERIOR  
GEOLOGICAL SURVEY

TAMPICO QUADRANGLE  
ILLINOIS-WHITESIDE CO.  
7.5 MINUTE SERIES (TOPOGRAPHIC)  
NE/4 PROPHETSTOWN 15' QUADRANGLE



Mapped, edited, and published by the Geological Survey  
Control by USGS and NOS/NOAA

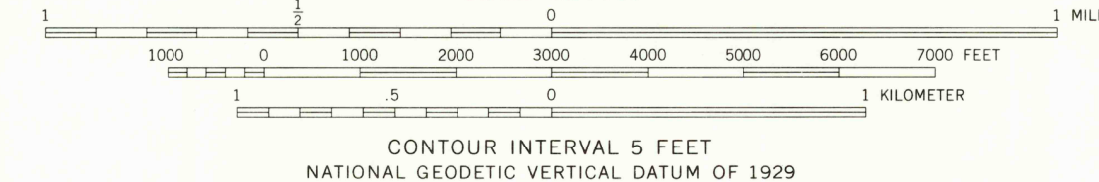
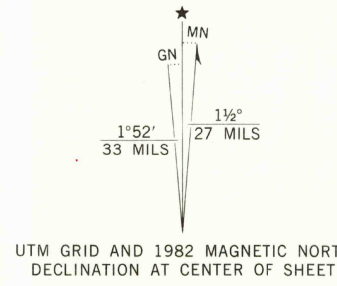
Topography by photogrammetric methods from aerial photographs  
taken 1979-80. Field checked 1981. Map edited 1982

Projection and 10,000-foot grid ticks. Illinois coordinate  
system, west zone (transverse Mercator)  
1000-meter Universal Transverse Mercator grid, zone 16  
1927 North American Datum

To place on the predicted North American Datum 1983  
move the projection lines 2 meters north and  
9 meters east as shown by dashed corner ticks

There may be private inholdings within the boundaries of  
the National or State reservations shown on this map

Fine red dashed lines indicate selected fence and field lines where  
generally visible on aerial photographs. This information is unchecked



CONTOUR INTERVAL 5 FEET  
NATIONAL GEODETIC VERTICAL DATUM OF 1929

THIS MAP COMPLIES WITH NATIONAL MAP ACCURACY STANDARDS  
FOR SALE BY U.S. GEOLOGICAL SURVEY, RESTON, VIRGINIA 22092  
AND BY THE STATE GEOLOGICAL SURVEY, CHAMPAIGN, ILLINOIS 61820  
A FOLDER DESCRIBING TOPOGRAPHIC MAPS AND SYMBOLS IS AVAILABLE ON REQUEST

ROAD CLASSIFICATION  
Primary highway, hard surface  
Secondary highway, hard surface  
Unimproved road  
Interstate Route  
U.S. Route  
State Route



TAMPICO, ILL.  
NE/4 PROPHETSTOWN 15' QUADRANGLE  
N4137.5-W8945/7.5

1982  
DMA 3067 III NE-SERIES V863

MAY 16 1983

2550