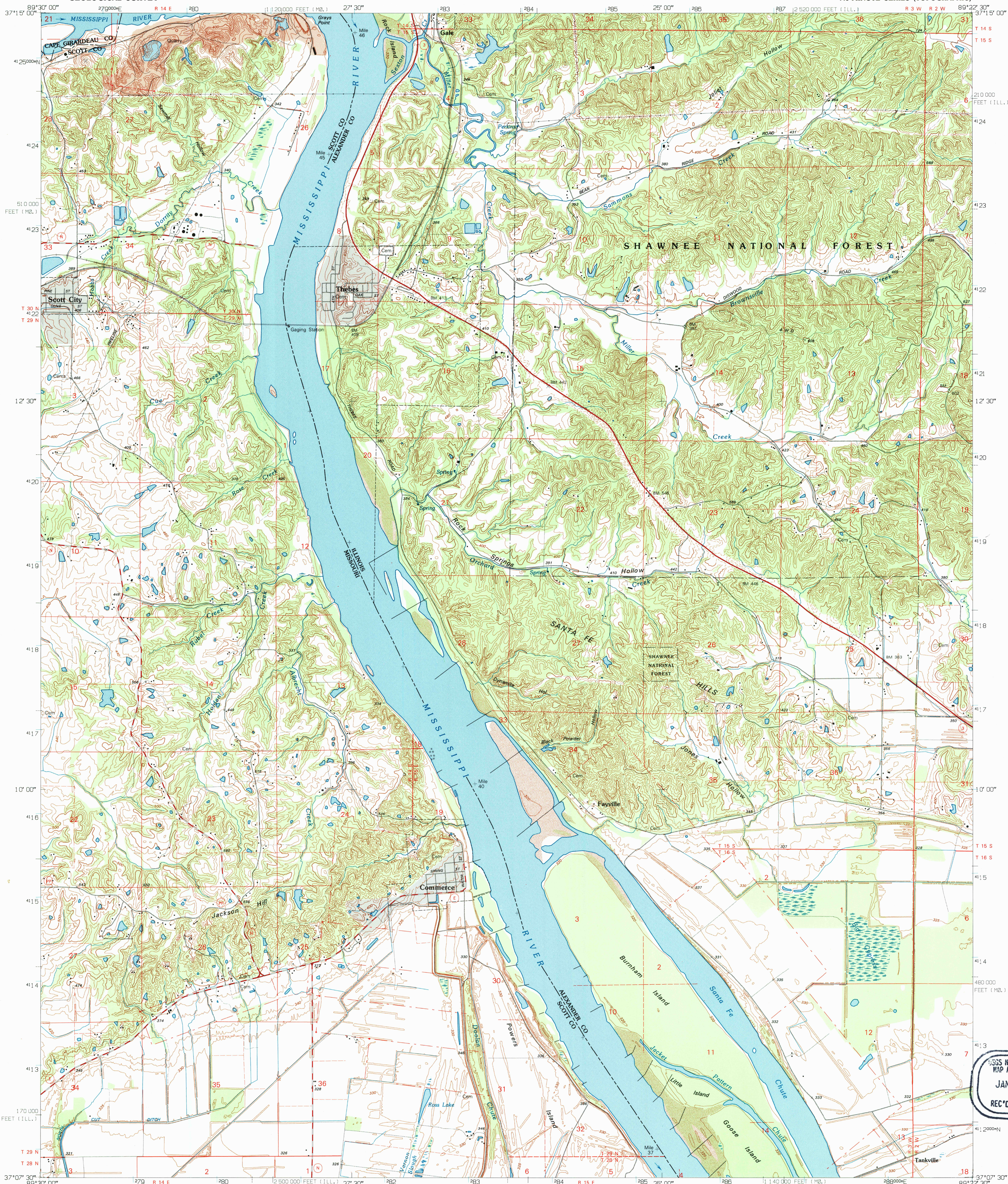


UNITED STATES  
DEPARTMENT OF THE INTERIOR  
GEOLOGICAL SURVEY

THEBES QUADRANGLE  
ILLINOIS-MISSOURI  
7.5-MINUTE SERIES (TOPOGRAPHIC)



Produced by the United States Geological Survey

Compiled by photogrammetric methods from imagery dated 1964-65

Field checked 1966. Revised in cooperation with the

U.S. Corps of Engineers from imagery dated 1993. PLSS

and survey control current as of 1966. Map edited 1995

Contours not revised. Contours that conflict with

revised planimetry are dashed

North American Datum of 1983 (NAD 83). Projection and

blue 1000-meter ticks: Universal Transverse Mercator, zone 16

10 000-foot ticks: Illinois (west zone) and Missouri (east zone)

Coordinate Systems of 1983

North American Datum of 1927 (NAD 27) is shown by dashed

corner ticks. The values of the shift between NAD 83 and NAD 27

for 7.5-minute intersections are obtainable from National Geodetic

Survey NADCON software

There may be private inholdings within the boundaries of

the National or State reservations shown on this map

1:28"

26 MILS

9 MILS

UTM GRID AND 1995 MAGNETIC NORTH

DECLINATION AT CENTER OF SHEET

SCALE 1:24 000

SUPPLEMENTARY CONTOUR INTERVAL 5 FEET

NATIONAL GEODETIC VERTICAL DATUM OF 1929

THIS MAP COMPLIES WITH NATIONAL MAP ACCURACY STANDARDS

FOR SALE BY U.S. GEOLOGICAL SURVEY, DENVER, COLORADO 80225, OR RESTON, VIRGINIA 22092

AND ILLINOIS GEOLOGICAL SURVEY, CHAMPAIGN, ILLINOIS 61820

AND DIVISION OF GEOLOGY AND LAND SURVEY

MISSOURI DEPARTMENT OF NATURAL RESOURCES, ROLLA, MISSOURI 65401

A FOLDER DESCRIBING TOPOGRAPHIC MAPS AND SYMBOLS IS AVAILABLE ON REQUEST

ILLINOIS

QUADRANGLE LOCATION

1 2 3

4 5

6 7 8

1 Cape Girardeau

2 McClure

3 Mill Creek

4 Scott City

5 Tamm

6 Morley

7 Thebes SW

8 Cache

THEBES, IL-MO

37089-B4-TF-024

1993

DMA 3158 III NW-SERIES V683

USGS NHD HISTORICAL  
MAP ARCHIVES  
JAN 29 1996  
REC'D FILE COPY

1272929  
678060761919  
E-26124-074-0 N831