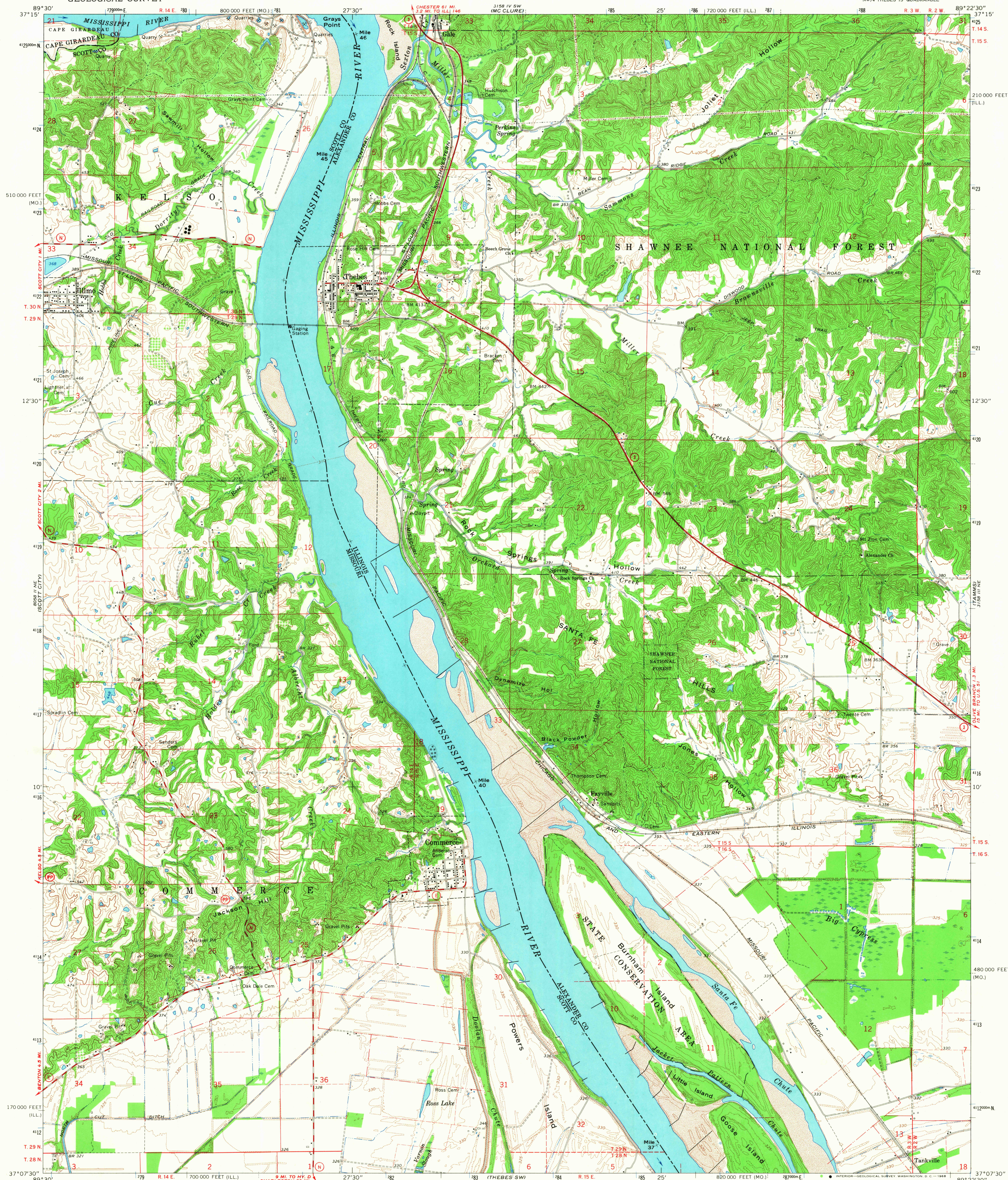
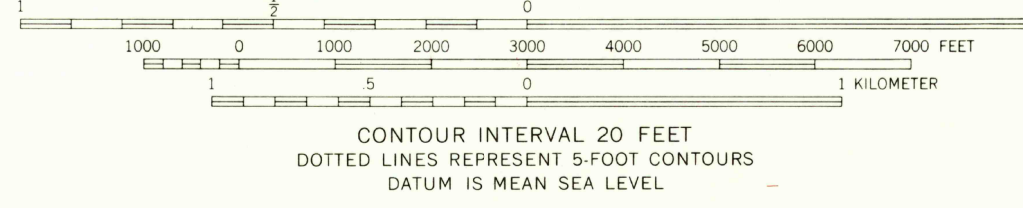
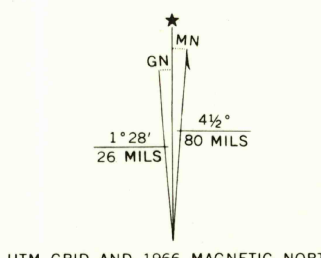


UNITED STATES
DEPARTMENT OF THE INTERIOR
GEOLOGICAL SURVEY

THEBES QUADRANGLE
ILLINOIS—MISSOURI
7.5 MINUTE SERIES (TOPOGRAPHIC)
NW/4 THEBES 15' QUADRANGLE



Mapped, edited, and published by the Geological Survey
Control by USGS and USC&GS
Topography by photogrammetric methods from aerial
photographs taken 1964-65. Field checked 1966
Polyconic projection. 1927 North American datum
10,000-foot grids based on Illinois coordinate system, west zone,
and Missouri coordinate system, east zone
1000-meter Universal Transverse Mercator grid ticks,
zone 16, shown in blue
Fine red dashed lines indicate selected fence and field lines where
generally visible on aerial photographs. This information is unchecked



THIS MAP COMPLIES WITH NATIONAL MAP ACCURACY STANDARDS
FOR SALE BY U. S. GEOLOGICAL SURVEY, DENVER, COLORADO 80225, OR WASHINGTON, D. C. 20242.
STATE GEOLOGICAL SURVEY, URBANA, ILLINOIS 61801,
AND MISSOURI GEOLOGICAL SURVEY, ROLLA, MISSOURI 65401
A FOLDER DESCRIBING TOPOGRAPHIC MAPS AND SYMBOLS IS AVAILABLE ON REQUEST

USGS
Historical File
Topographic Division



U.S.G.S.
FILE COPY
TOPOGRAPHIC DIVISION

ROAD CLASSIFICATION
Heavy-duty ——— Light-duty ———
Medium-duty ——— Unimproved dirt ———
State Route

THEBES, ILL.—MO.
NW/4 THEBES 15' QUADRANGLE
N3707.5—W8922.5/7.5

1966

AMS 3158 III NW—SERIES V863