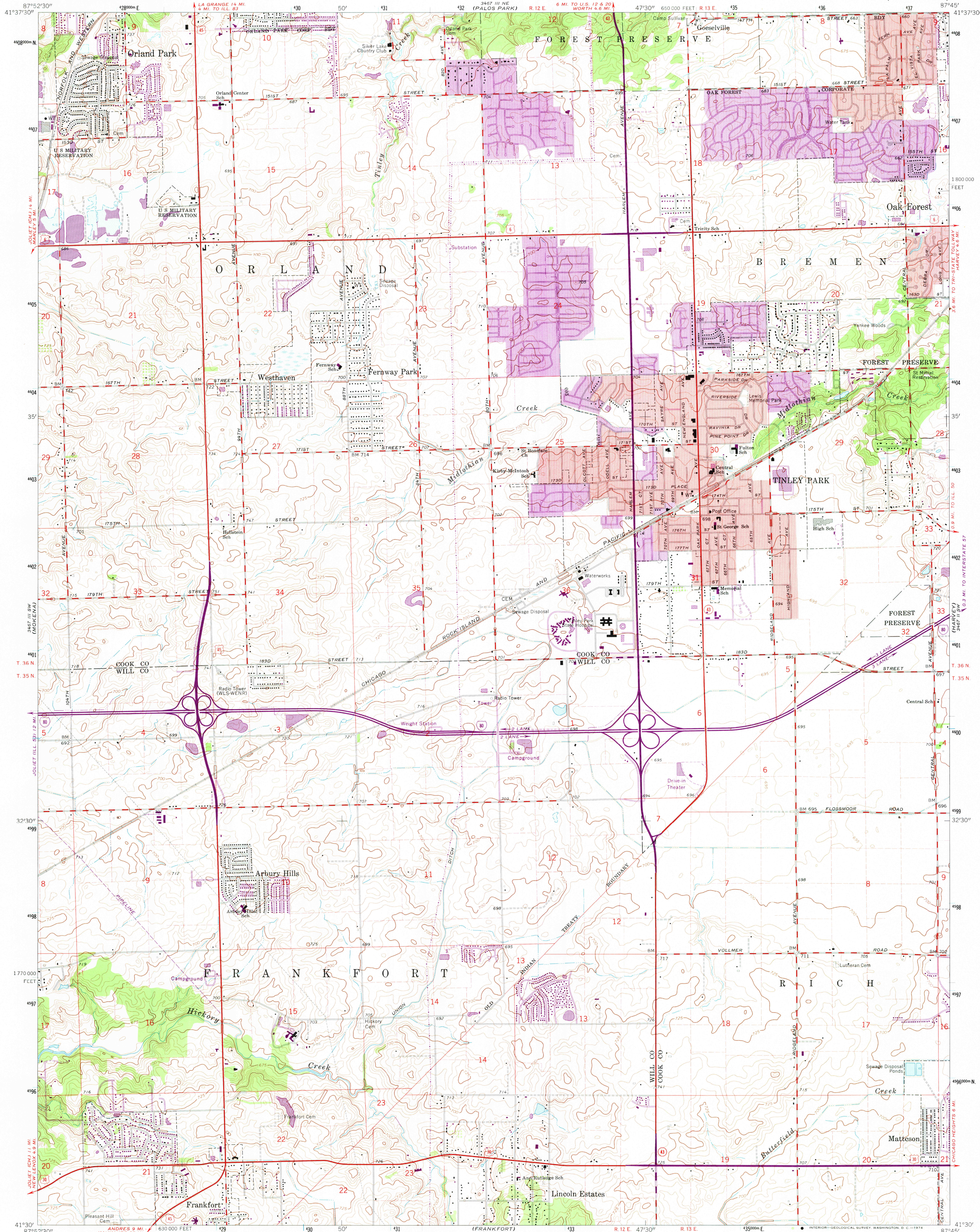
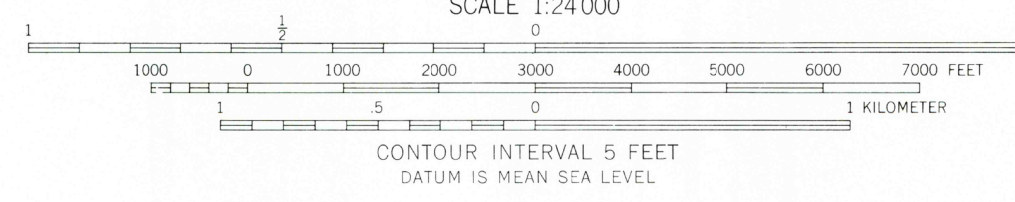
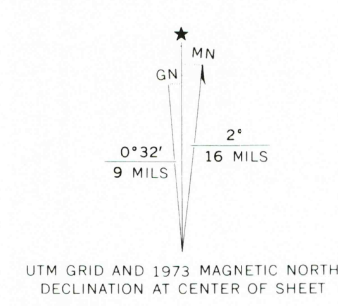


UNITED STATES
DEPARTMENT OF THE INTERIOR
GEOLOGICAL SURVEY

TINLEY PARK QUADRANGLE
ILLINOIS
7.5 MINUTE SERIES (TOPOGRAPHIC)



Mapped, edited, and published by the Geological Survey in cooperation with State of Illinois Geological Survey Control by USGS, USC&GS, and Cook County Highway Department. Planimetry by photogrammetric methods from aerial photographs taken 1962. Topography by planimetric surveys 1926. Revised 1963. Polyconic projection. 1927 North American datum. 10,000-foot grid based on Illinois coordinate system, east zone 1000-meter Universal Transverse Mercator grid ticks, zone 16, shown in blue. Red tint indicates areas in which only landmark buildings are shown. Fine red dashed lines indicate selected fence and field lines where generally visible on aerial photographs. This information is unchecked. Revisions shown in purple compiled from aerial photographs taken 1973. This information not field checked. Purple tint indicates extension of urban areas.



THIS MAP COMPLIES WITH NATIONAL MAP ACCURACY STANDARDS FOR SALE BY U.S. GEOLOGICAL SURVEY, WASHINGTON, D.C. 20242 AND BY THE STATE GEOLOGICAL SURVEY, URBANA, ILLINOIS 61801. A FOLDER DESCRIBING TOPOGRAPHIC MAPS AND SYMBOLS IS AVAILABLE ON REQUEST.



ROAD CLASSIFICATION
Heavy-duty ——— Light-duty ———
Medium-duty ——— Unimproved dirt ———
Interstate Route U.S. Route State Route
TINLEY PARK, ILL.
N4130—W8745/7.5
1963
PHOTOREVISED 1973
AMS 3467 III SE—SERIES W863

MAY 0 2 1974