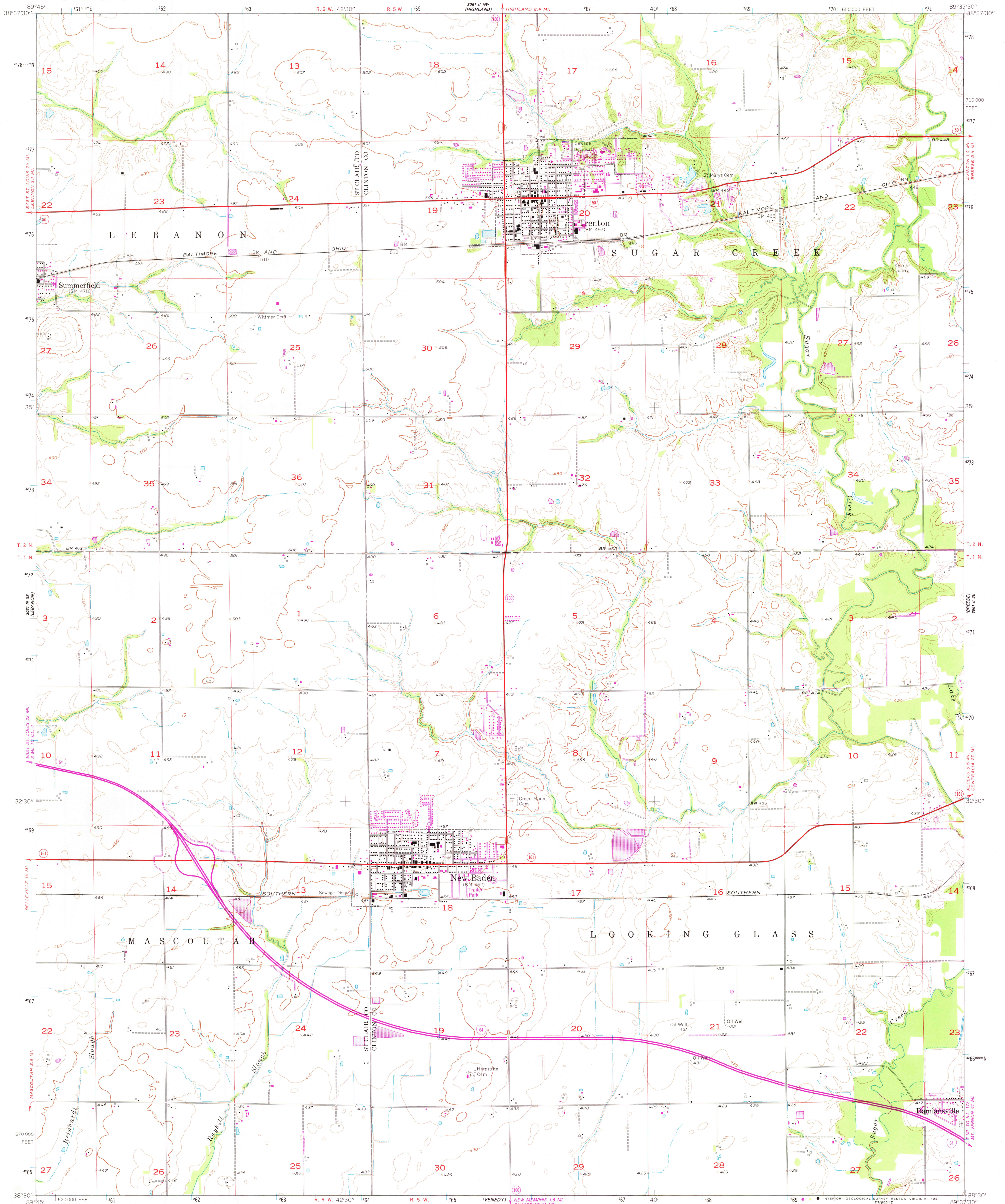


UNITED STATES
DEPARTMENT OF THE INTERIOR
GEOLOGICAL SURVEY

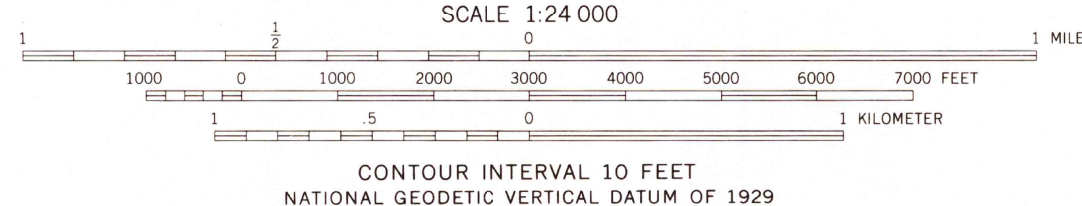
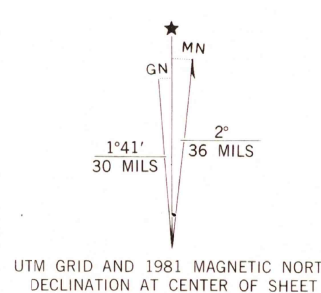
TRENTON QUADRANGLE
ILLINOIS
7.5 MINUTE SERIES (TOPOGRAPHIC)



Mapped, edited, and published by the Geological Survey
Control by USGS and USC&GS

Topography from aerial photographs by photogrammetric methods
and by planimetric surveys 1957. Aerial photographs taken 1955
Polyconic projection, 1927 North American datum
10,000-foot grid based on Illinois coordinate system, west zone
1000-meter Universal Transverse Mercator grid ticks,
zone 16, shown in blue
To place on the predicted North American Datum 1983
move the projection lines 2 meters south and
8 meters east as shown by dashed corner ticks

Revisions shown in purple compiled from aerial photographs taken
1979. Map edited 1981. This information not field checked



THIS MAP COMPLIES WITH NATIONAL MAP ACCURACY STANDARDS
FOR SALE BY U. S. GEOLOGICAL SURVEY, RESTON, VIRGINIA 22092
AND BY THE STATE GEOLOGICAL SURVEY, URBANA, ILLINOIS 61801
A FOLDER DESCRIBING TOPOGRAPHIC MAPS AND SYMBOLS IS AVAILABLE ON REQUEST



ROAD CLASSIFICATION
Primary highway, hard surface
Secondary highway, hard surface
Unimproved road
Interstate Route
U. S. Route
State Route

TRENTON, ILL.
N 3830—W 8937.5/7.5

USGS
HISTORICAL FILE
NATIONAL MAPPING DIVISION

1957
PHOTOREVISED 1981
DMA 3061 II SW—SERIES V863

SEP 28 1981
2250