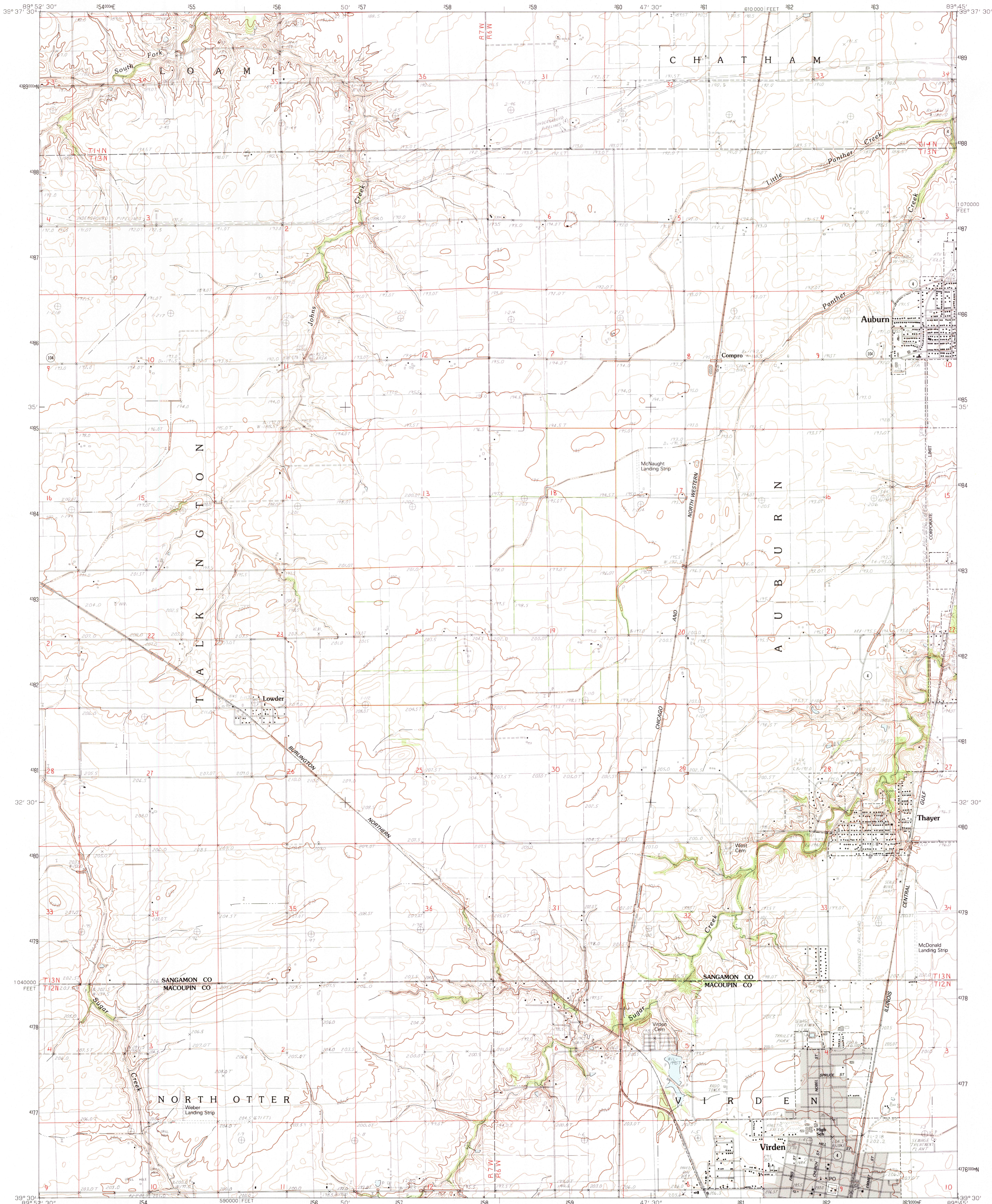


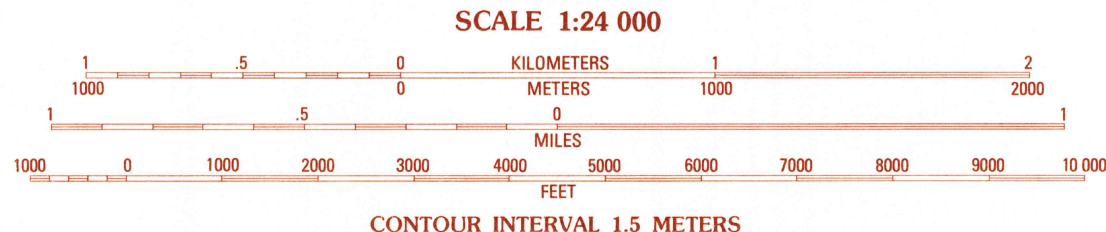
UNITED STATES
DEPARTMENT OF THE INTERIOR
GEOLOGICAL SURVEY

VIRDEN NORTH QUADRANGLE
ILLINOIS
7.5 MINUTE SERIES (TOPOGRAPHIC)



PRODUCED BY THE UNITED STATES GEOLOGICAL SURVEY
CONTROL BY USGS AND NOS/NOAA
COMPILED FROM AERIAL PHOTOGRAPHS TAKEN 1975
FIELD CHECKED 1979. MAP EDITED 1983
PROJECTION TRANSVERSE MERCATOR
GRID: 1000-METER UNIVERSAL TRANSVERSE MERCATOR
10,000-FOOT STATE GRID TICS ILLINOIS, WEST ZONE
UTM GRID DECLINATION 14° 07' WEST
1983 MAGNETIC NORTH DECLINATION 2° 00' EAST
VERTICAL DATUM NATIONAL GEODETIC VERTICAL DATUM OF 1929
HORIZONTAL DATUM 1927 NORTH AMERICAN DATUM
To place on the predicted North American Datum of 1983
move the projection lines as shown by dashed corner ticks
(1 meter south and 8 meters east)
There may be private inholdings within the boundaries of any
Federal and State reservations shown on this map
Gray tint indicates area in which selected buildings are shown

PROVISIONAL MAP
Produced from original
manuscript drawings. Infor-
mation shown as of date of
field check.



CONTOUR INTERVAL 1.5 METERS
CONTROL ELEVATIONS SHOWN TO THE NEAREST 0.1 METER
OTHER ELEVATIONS SHOWN TO THE NEAREST 0.5 METER
To convert meters to feet multiply by 3.2808
To convert feet to meters multiply by 3.048
THIS MAP COMPLIES WITH NATIONAL MAP ACCURACY STANDARDS
FOR SALE BY U. S. GEOLOGICAL SURVEY, RESTON, VIRGINIA 22092
AND THE STATE GEOLOGICAL SURVEY, CHAMPAIGN, ILLINOIS 61820

1	2	3	1 New Berlin
4	5	2 Loani	
6	7	3 Chatham	
		4 Waverly	
		5 Divernon	
		6 Palmyra	
		7 Virden South	
		8 Farmersville	

ADJOINING 7.5 QUADRANGLE NAMES
CONTOURS AND ELEVATIONS
IN METERS

ROAD LEGEND
Improved Road
Unimproved Road
Trail
Interstate Route U. S. Route State Route

VIRDEEN NORTH, ILLINOIS
PROVISIONAL EDITION 1983

39089-E7-TM-024

MAY 1984