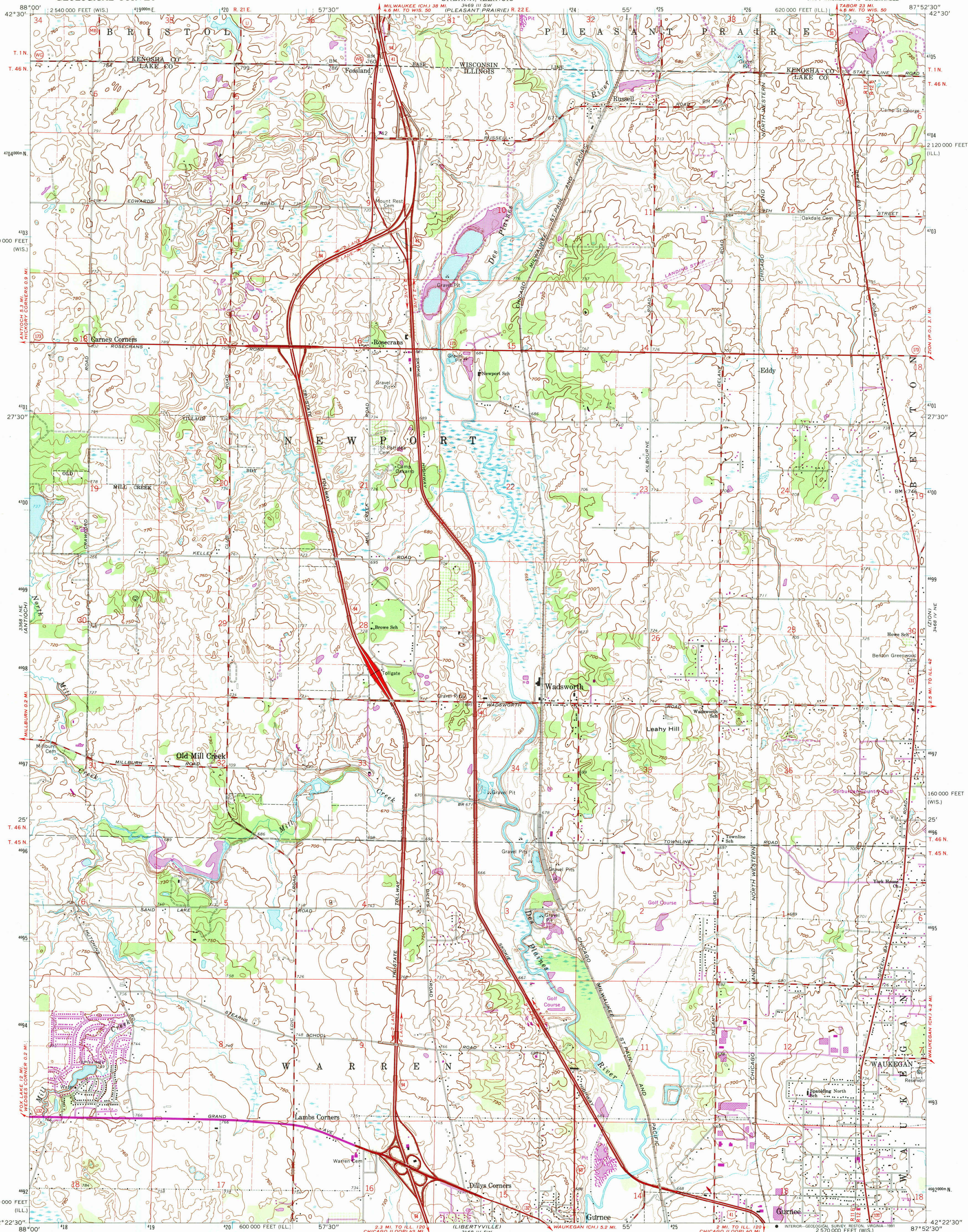


UNITED STATES
DEPARTMENT OF THE INTERIOR
GEOLOGICAL SURVEY

STATE OF ILLINOIS
DEPARTMENT OF REGISTRATION AND EDUCATION
GEOLOGICAL SURVEY DIVISION
URBANA, ILLINOIS

WADSWORTH QUADRANGLE
ILLINOIS-WISCONSIN
7.5 MINUTE SERIES (TOPOGRAPHIC)
NW 4 WAUKEGAN 15' QUADRANGLE



Maped, edited, and published by the Geological Survey

Control by USGS and USC&GS

Topography from aerial photographs by photogrammetric methods

Aerial photographs taken 1958. Field checked 1960

Polyconic projection. 1927 North American datum

10,000-foot grids based on Illinois coordinate system, east zone

and Wisconsin coordinate system, south zone

1000-meter Universal Transverse Mercator grid ticks,

zone 16, shown in blue

Fine red dashed lines indicate selected fence and field lines where

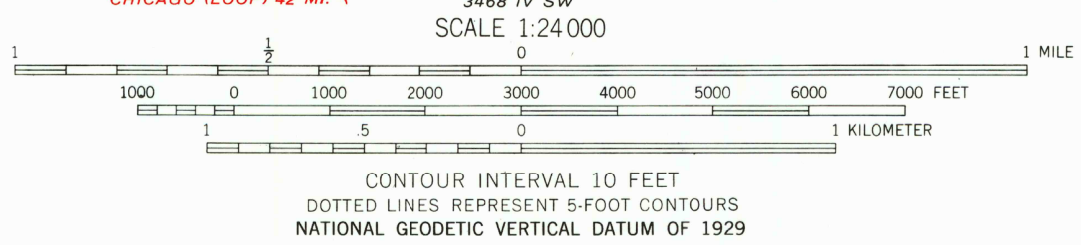
generally visible on aerial photographs. This information is unchecked

Revisions shown in purple compiled from aerial photographs

taken 1972. This information not field checked

Map photoinspected 1978

No major culture or drainage changes observed



THIS MAP COMPLIES WITH NATIONAL MAP ACCURACY STANDARDS
FOR SALE BY U.S. GEOLOGICAL SURVEY, DENVER, COLORADO 80225, OR RESTON, VIRGINIA 22092
ILLINOIS GEOLOGICAL SURVEY, CHAMPAIGN, ILLINOIS 61820
AND WISCONSIN GEOLOGICAL AND NATURAL HISTORY SURVEY, MADISON, WISCONSIN 53706
A FOLDER DESCRIBING TOPOGRAPHIC MAPS AND SYMBOLS IS AVAILABLE ON REQUEST

The difference between 1927 North American Datum and North
American Datum of 1983 (NAD 83) for 7.5 minute intersections
is given in USGS Bulletin 1875. The NAD 83 is shown by
dashed corner ticks

ROAD CLASSIFICATION
Heavy-duty ——— Light-duty ———
Medium-duty ——— Unimproved dirt ———
Interstate Route U.S. Route State Route

WADSWORTH, ILL.—WIS.

NW 4 WAUKEGAN 15' QUADRANGLE

42087-08-17-024

PHOTOINSPECTED 1978

1960

PHOTOREVISED 1972

DMA 3468 IV NW—SERIES V863

