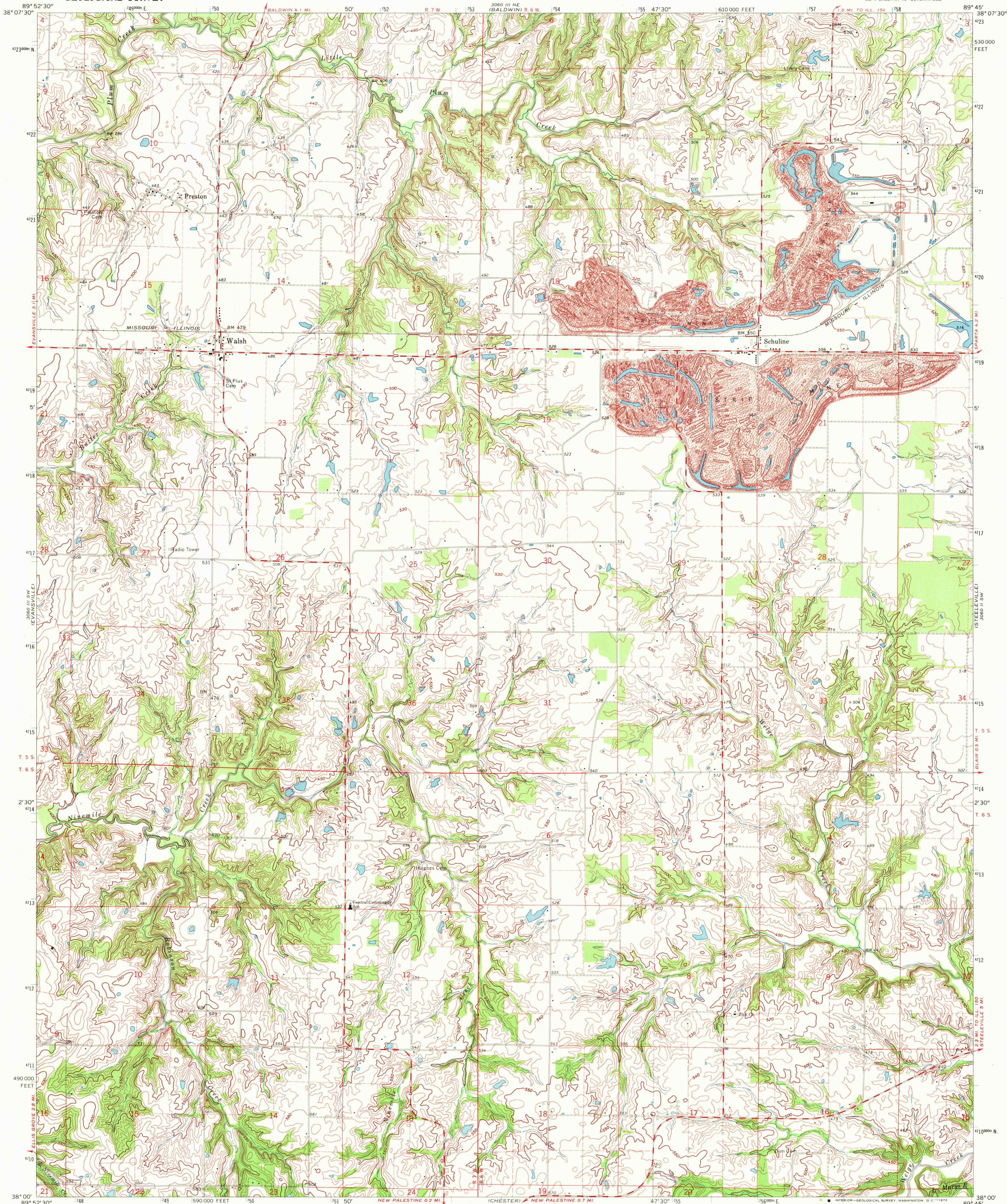


UNITED STATES  
DEPARTMENT OF THE INTERIOR  
GEOLOGICAL SURVEY

WALSH QUADRANGLE  
ILLINOIS-RANDOLPH CO.  
7.5 MINUTE SERIES (TOPOGRAPHIC)  
SE 1/4 BALDWIN 15' QUADRANGLE



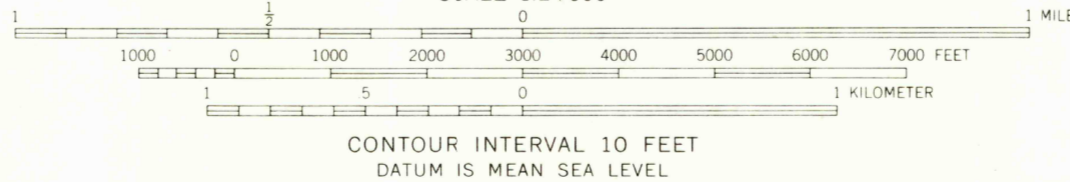
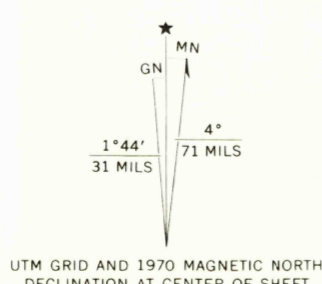
Mapped, edited, and published by the Geological Survey

Control by USGS and USC&GS

Topography by photogrammetric methods from aerial photographs taken 1968. Field checked 1970

Polyconic projection. 1927 North American datum  
10,000-foot grid based on Illinois coordinate system, west zone  
1000-meter Universal Transverse Mercator grid ticks,  
zone 16, shown in blue

Fine red dashed lines indicate selected fence and field lines where  
generally visible on aerial photographs. This information is unchecked



THIS MAP COMPLIES WITH NATIONAL MAP ACCURACY STANDARDS  
FOR SALE BY U. S. GEOLOGICAL SURVEY, WASHINGTON, D. C. 20242  
AND BY THE STATE GEOLOGICAL SURVEY, URBANA, ILLINOIS 61801  
A FOLDER DESCRIBING TOPOGRAPHIC MAPS AND SYMBOLS IS AVAILABLE ON REQUEST

ROAD CLASSIFICATION  
Secondary highway, all weather, Light-duty road, all weather,  
hard surface Improved surface  
Unimproved road, fair or dry  
weather



WALSH, ILL.  
SE 1/4 BALDWIN 15' QUADRANGLE  
N3800-W8945/7.5

1970

AMS 3060 III SE-SERIES V863

AUG 3 1972

23/5

USGS  
HISTORICAL FILE  
TOPOGRAPHIC DIVISION